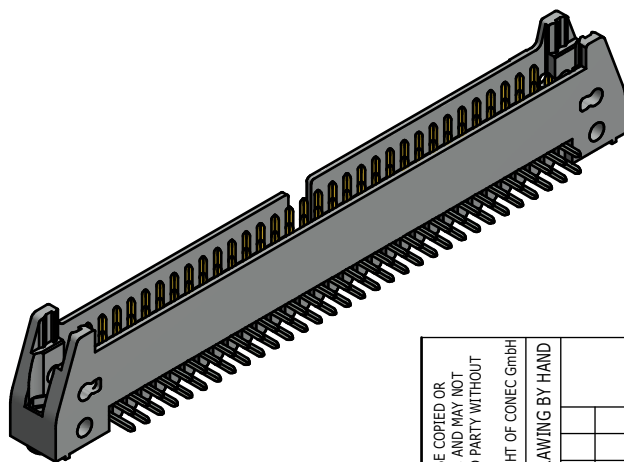
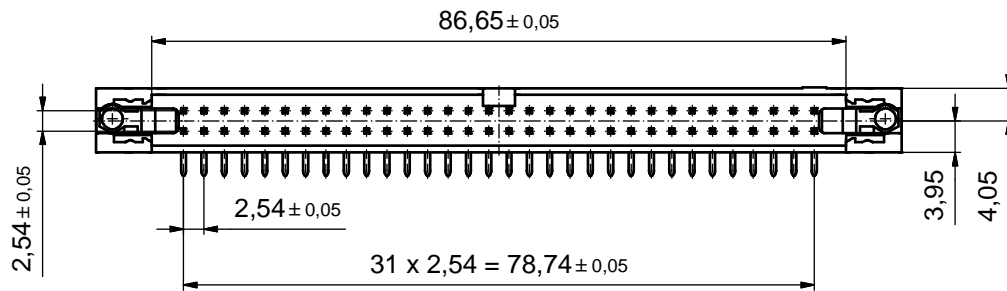
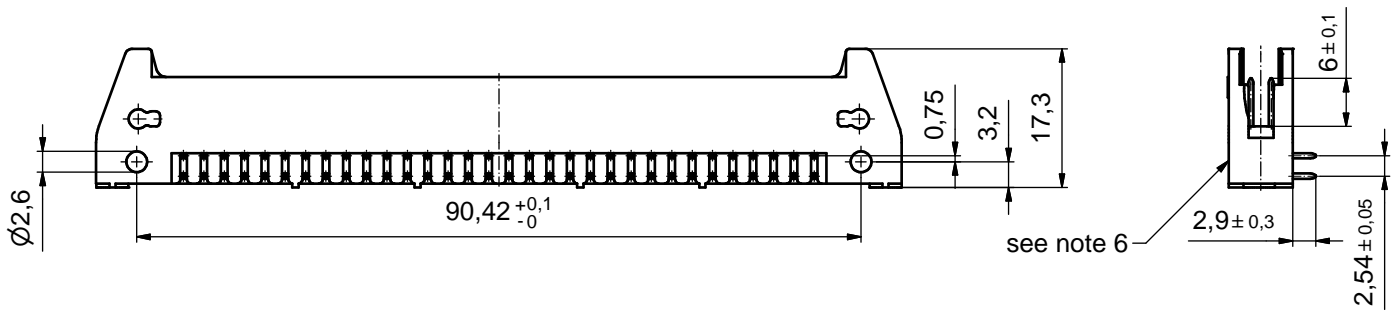
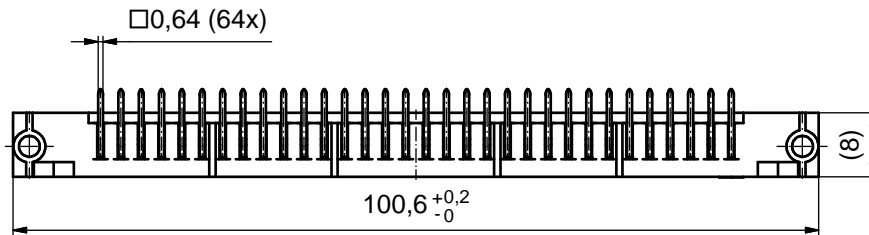
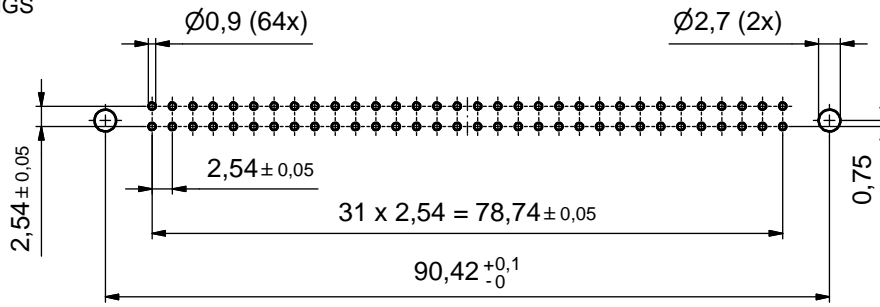


P.C.B. HOLE DRILLINGS  
(P.C.B. TOP SIDE)



NOTES:

- INSULATOR: PBT GF, V0 UL 94 V-0, GREY
- CONTACTS: COPPER ALLOY  
PLATING, MATING AREA: GOLD OVER NICKEL  
PLATING, TERMINATION SIDE: TIN OVER NICKEL  
50 MATING CYCLES
- OPERATING TEMPERATURE RANGE: -55°C TO +125°C
- CURRENT CARRYING CAPACITY:  $\leq 5$  A
- TEST VOLTAGE: 1000 V eff.
- CONNECTOR IS PART MARKED: 141A12279X CONEC ABC

Directive 2002/95/EC RoHS compliant

THIS DRAWING MAY NOT BE COPIED OR REPRODUCED IN ANY WAY, AND MAY NOT BE PASSED ON TO A THIRD PARTY WITHOUT WRITTEN PERMISSION. OWNERSHIP AND COPYRIGHT OF CONEC GmbH DO NOT ALTER CAD DRAWING BY HAND				tolerance DIN ISO 2768-m		scale: 1,5:1
				date	name	material: see notes
				drawn 14.03.14	Schmidt	title: <b>HEADER</b> 64pos. with right angle solder pins without latches
				appd. 17.03.14	Lehmenkühler	
				norm		
				d-old		
				a Original		dwg no: 14K1A029
rev.	description	date	name			part no: 141A12279X