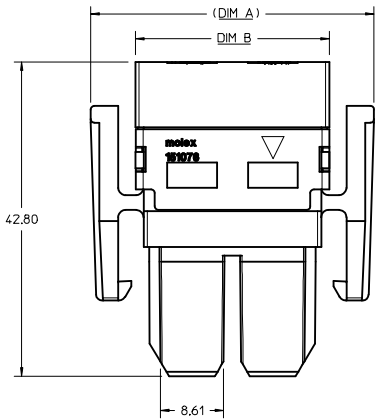
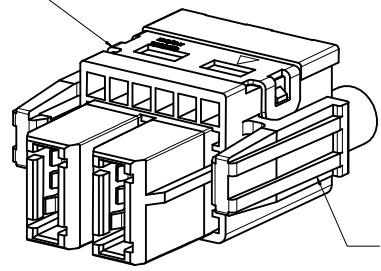


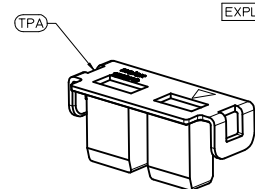
CKT SIZE	PART NUMBER			DM A	DM B	DM C
	WTB MAIN HOUSING	TPA	6 AWG POWER TERMINAL			
2	151034-0012	151076-0012	46819-0013 (2X)	38.60	26.40	24.20
3	151034-0013	151076-0013	46819-0013 (3X)	49.60	37.40	35.20
4	151034-0014	151076-0014	46819-0013 (4X)	60.60	48.40	46.20
5	151034-0015	151076-0015	46819-0013 (5X)	71.60	59.40	57.20
6	151034-0016	151076-0016	46819-0013 (6X)	82.60	70.40	68.20



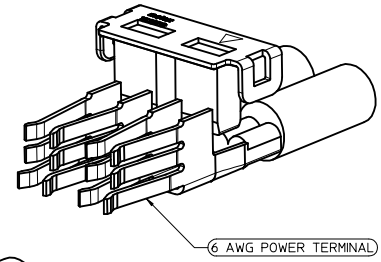
TPA
PART NO: 151076-001*



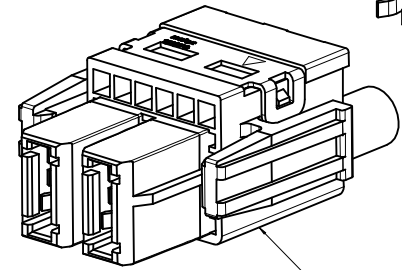
WTB MAIN HOUSING
PART NO: 151034-001*



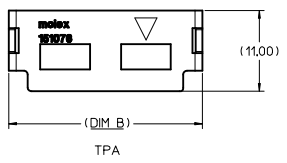
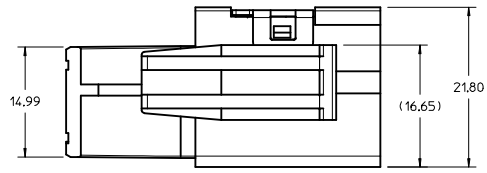
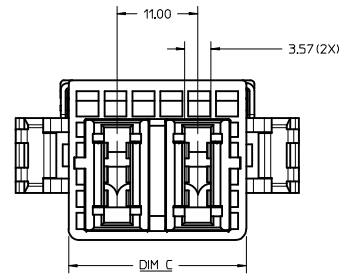
EXPLODED VIEW OF WIRE HARNESS



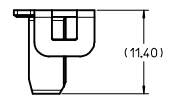
6 AWG POWER TERMINAL



WTB MAIN HOUSING



TPA



NOTES:

- MATERIAL:
MAIN HOUSING AND TPA: PBT
CRIMP TERMINAL: COPPER ALLOY
- FINISHES: TIN OVER NICKEL WITH SELECTIVE GOLD
- PRODUCT SPEC: PS-151053-0000
- PACKAGING:
WTB MAIN HOUSING: PK-151034-0001 IN TRAY
TPA: PK-151076-0001 IN BAG
- TO BE USED WITH CRIMP PART NUMBER: 46819-0013
MOLEX DRAWING SD-46819-001, CABLE ASSEMBLIES: TBA.
- PARTS ARE RoHS COMPLIANT.
- TPA MUST BE USED WITH HOUSING.
- DO NOT INSERT TPA INTO MAIN HOUSING UNTIL THE CRIMP WITH WIRES HAD BEEN INSERTED.
- FOR WIRE SIZE: 6AWG.
- TPA, HOUSING AND CRIMP ARE SOLD SEPARATELY.

ADD PK SPEC IEC NO: S2016-0905 2016/03/31 DRAWN: CGOH 2016/04/07 CHK'D: EANG 2016/04/08 APPROV: KHLIM	QUALITY SYMBOLS ∇=0 ∇=0 ∇=0	GENERAL TOLERANCES (UNLESS SPECIFIED)	DIMENSION STYLE	SCALE	DESIGN UNITS	THIRD ANGLE PROJECTION	
		mm	MM ONLY	3:1	METRIC		
		4 PLACES ±	DATE	TITLE			
		3 PLACES ±	CGOH 2014/04/23	GUARDIAN CRIMP RECEPTACLE HOUSING 2 - 6 CKTS			
2 PLACES ± 0.25	DATE	molex					
1 PLACE ±	EANG 2014/11/24	DOCUMENT NO. SD-151034-0001					
0 PLACE ±	DATE	SHEET NO. 1 OF 1					
ANGULAR ± 1 °		MATERIAL NO. SEE TABLE		SIZE D			
DRAFT WHERE APPLICABLE MUST REMAIN WITHIN DIMENSIONS		THIS DRAWING CONTAINS INFORMATION THAT IS PROPRIETARY TO MOLEX INCORPORATED AND SHOULD NOT BE USED WITHOUT WRITTEN PERMISSION					