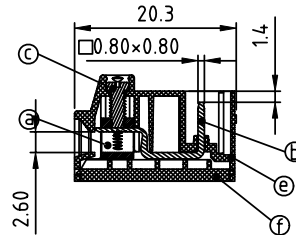
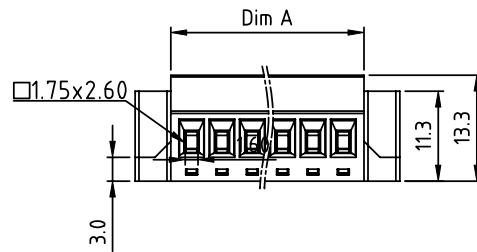
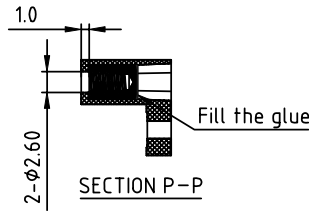
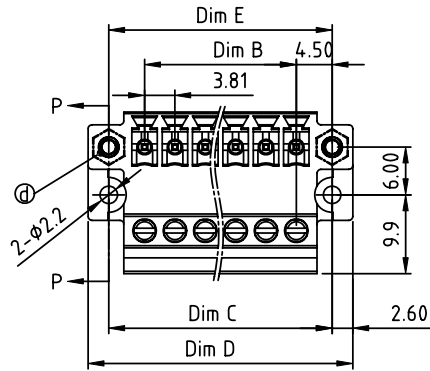


PRODUCT NUMBER	PITCH
V5xx31x100J0G	3.81mm



Material:

- ItemⒶ Clamp: Brass Ni plated
- ItemⒸ Pin: Brass, Tin plated.
- ItemⒹ Terminal screw: Steel, Zinc plated
- ItemⒺ With flange nut: Brass M2.5
- ItemⓂ Terminal housing: Thermoplastic (UL94V-0)
- ItemⓎ Terminal cover: Thermoplastic (UL94V-0)

Electrical: cULus

- Voltage rating: 300V
- Current rating: 8A
- Wire range:
- Solid wire(AWG):14-28
- Stranded wire(AWG):14-28
- Torque(Lb-In):2.17
- Screw: M2
- Wire strip length:6 mm
- Withstanding Voltage:1.6KV
- Operating temperature:-40°C to +115°C
- Safety Approval: cULus

N = Number of poles
 Dim A=Nx3.81+1.39
 Dim B=(N-1)x3.81
 Dim C=Nx3.81+5.19
 Dim D=Nx3.81+10.39
 Dim E=Nx3.81+5.19

Poles	Tolerance
2-6p	±0.15
7-12p	±0.20
13-18p	±0.30
19-24p	±0.35

PART NO.: V5 xx 31 x 1 00J0 G

Solid block		Color		RoHS compliant
No. of poles	2	Black (RAL9005)	2	Red (RAL3001/D)
	02	3 poles	3	Orange(RAL2011/P)
	03	4 poles	4	Yellow(RAL1018/A)
	...	5 poles	5	Green(RAL6018/T)
	24	24 poles	6	Blue (RAL5015/A)
			8	Grey(RAL7035/D)
			9	White(RAL1102)
			C	Green(RAL6018/U)

In copper Alloy

mat'l. code				surface ASME Y14.5		tolerance ASME Y14.5		projection		product family TERMINAL BLOCK			
ltr ecn no dr date				tolerances unless otherwise specified		angles		MM		title TERMINAL BLOCK PLUGGABLE PLUG, WITH FLANGE BOTTOM COVER FIXED TYPE			
				X±0.5		X.X±0.3		scale		dwg no V5xx31x100J0G			
				X*±1"		X.XX±0.1		FCI		sheet 1 of 1 size A4			
				dr EVIN ZHONG 050414		enr EVIN ZHONG 050414				type CUSTOMER Drawing			
				chr HANKE FENG 050414		appd SHI JUN 050414							
sheet index		revision sheet		A 1									