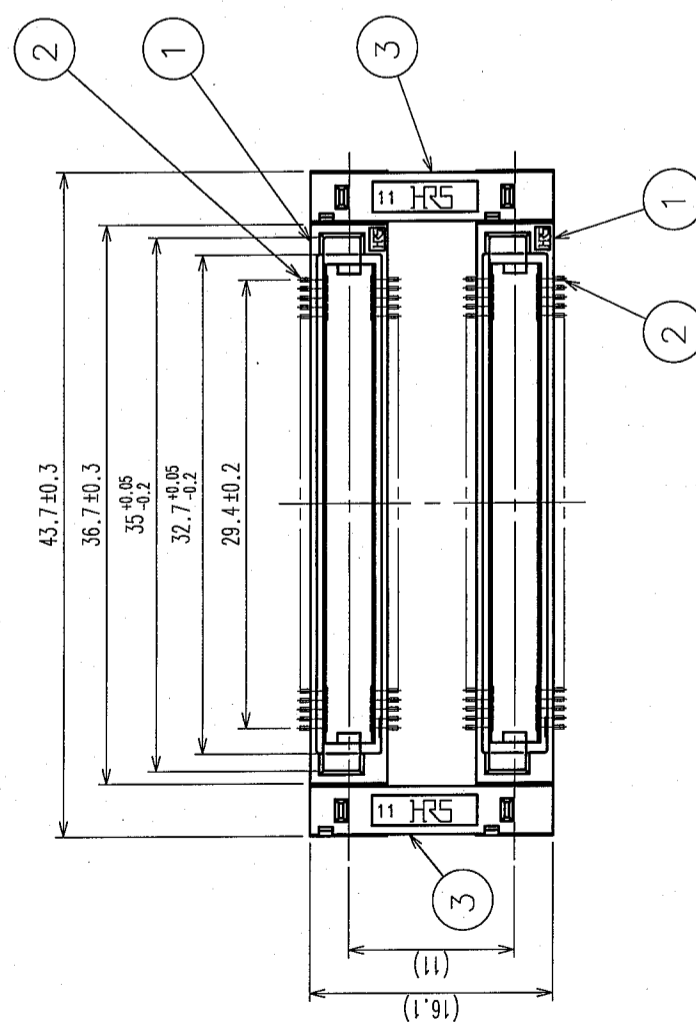
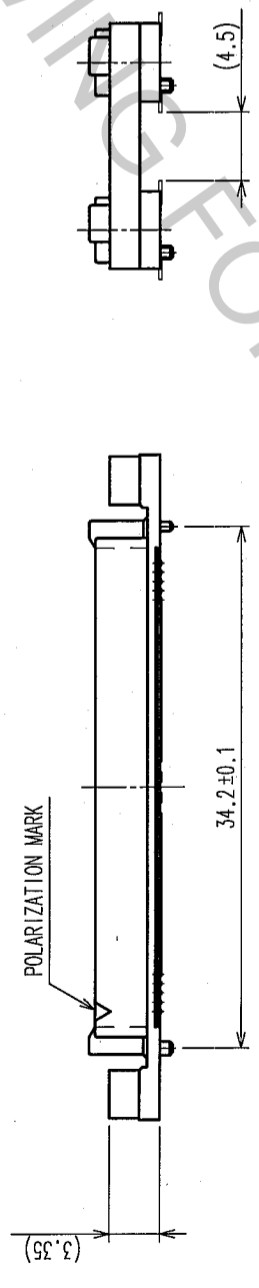
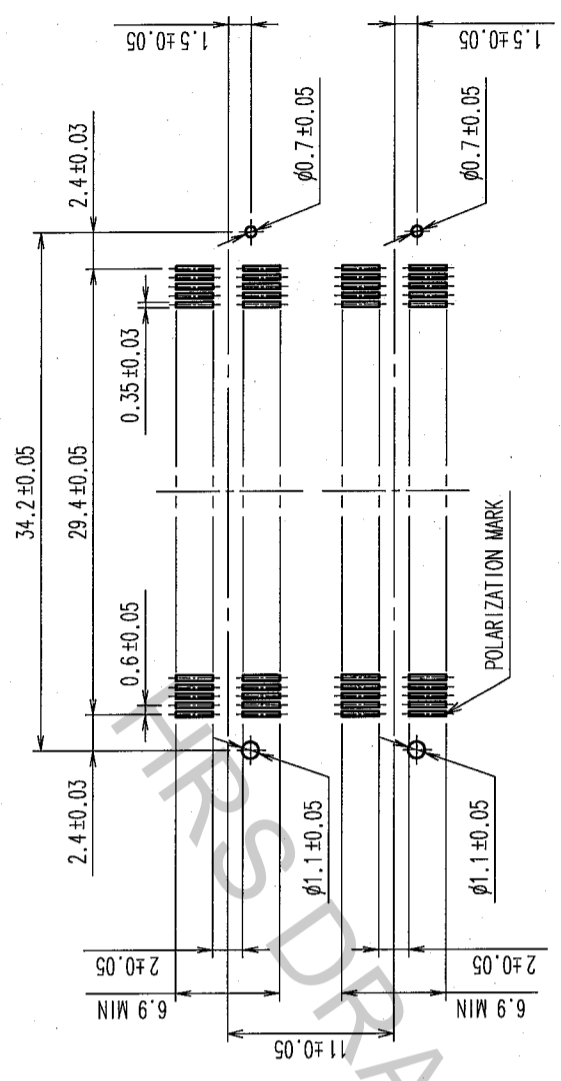


COUNT	DESCRIPTION OF REVISIONS	BY	CHKD	DATE	COUNT	DESCRIPTION OF REVISIONS	BY	CHKD	DATE
△					△				
△					△				



RECOMMENDED LAND PATTERN DIMENSION
OF PCB (MOUNTING SIDE)



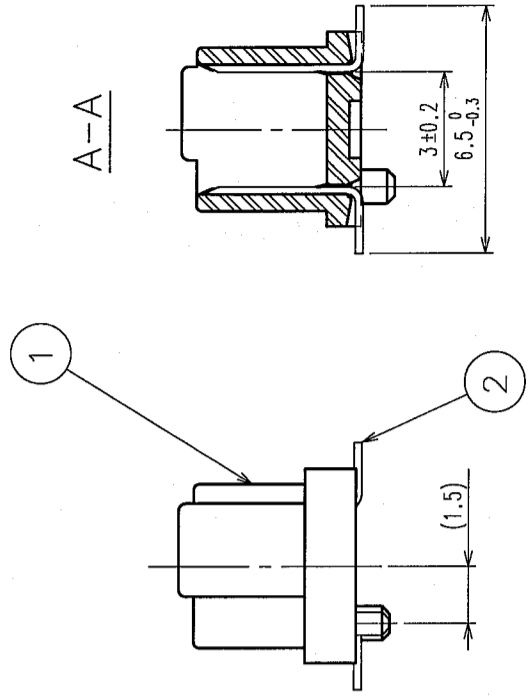
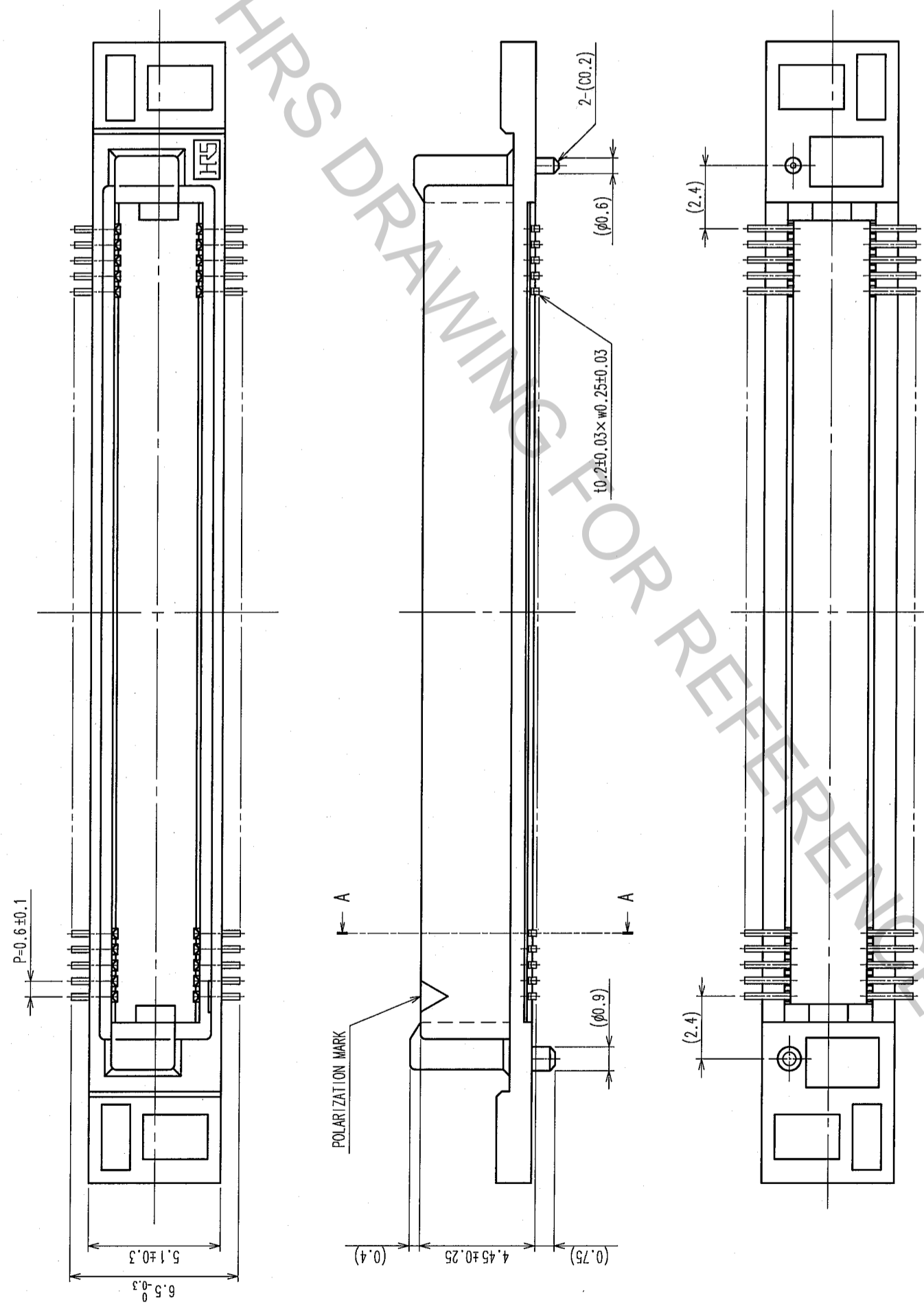
- NOTES
- 1 LEAD CO-PLANARITY SHALL BE 0.1mm MAX.
 - 2 AFTER MOUNTING BOARD, REF. NO.3 SHALL BE REMOVED.
 - 3 FOR MODIFICATION, ETC., PREVENTIVE HOLE FOR SINK MARK MAY BE ADDED DEPENDS ON CIRCUMSTANCES.
 - 4 THE DIMENSIONS IN PARENTHESES ARE FOR REFERENCE.

1,3	PPS	LIGHT BROWN (UL94V-0)	2	PHOSPHOR BRONZE	CONTACT AREA: GOLD 0.1μm min LEAD AREA: GOLD FLASH UNDER PLATING: NICKEL 0.5μm min
NO.	MATERIAL	FINISH, REMARKS	NO.	MATERIAL	FINISH, REMARKS
CODE NO. (OLD)	CL				
DRAWING NO.		PART NO.		APPROVED	
EDC3-150903-25		FX8C-100/100P11-SVJ(71)		RELEASED	
SCALE		DRAWN		DESIGNED	
2 : 1		K. NAKAMURA		K. NAKAMURA	
UNITS		06.02.21		06.02.21	
mm		06.02.21		06.02.21	
		HIROSE ELECTRIC CO., LTD		CL578-0655-2-71	
		1		2	

TO	
PCK	

DETAIL AFTER REMOVING JOINT

COUNT		DESCRIPTION OF REVISIONS		BY	CHKD	DATE	COUNT	DESCRIPTION OF REVISIONS		BY	CHKD	DATE
△	△						△					
△	△						△					
△	△						△					



NOTE THE DIMENSIONS IN PARENTHESES ARE FOR REFERENCE.

TO	
PCK	

NO.	MATERIAL	FINISH, REMARKS	NO.	MATERIAL	FINISH, REMARKS
CL					
DRAWING NO.		PART NO.		FINISH, REMARKS	
EDC3-150903-25		FX8C-100/100P11-SVJ(71)		APPROVED	
SCALE		CODE NO.		RELEASED	
5 : 1		CL578-0655-2-71		H. Okawa	
UNITS		HIROSE ELECTRIC CO., LTD		'06.02.21	
mm				'06.02.21	