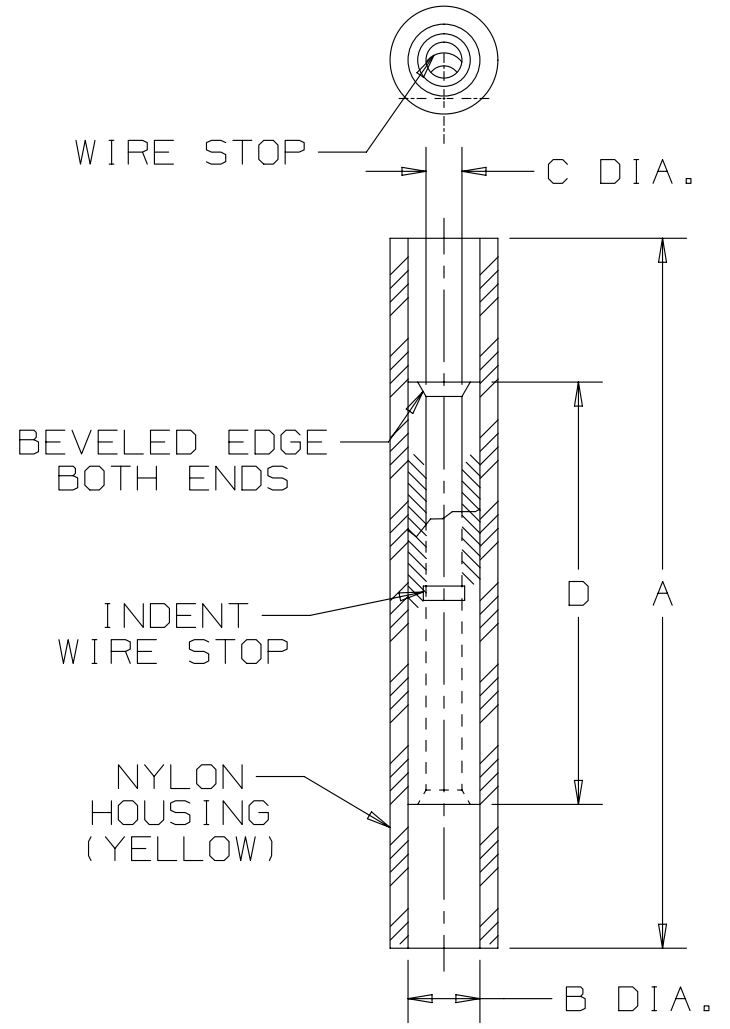


THIS COPY IS PROVIDED ON A RESTRICTED BASIS AND IS NOT TO BE USED IN ANY WAY DETRIMENTAL TO THE INTERESTS OF PANDUIT CORP.

PANDUIT PART NUMBER	WIRE SIZE	DIMENSIONS in.			
		$\pm .03$ A	$\pm .01$ B DIA.	$\pm .01$ C DIA.	$\pm .03$ D
BSN22	26-22	.79 (20.1)	.08 (2.0)	.04 (1.0)	.47 (1.2)



NOTES:

- USED FOR:  
A. #26-22 AWG SOLID OR STRANDED COPPER WIRE  
B. 221°F [105°C] MAX. TEMP. RATING
- INSTALLATION TOOLS: CT-520, CT-1525, CT-2500
- WIRE STRIP LENGTH: 1/4  $\pm .0032$  [6,4  $\pm .08$ ]
- MATERIAL:  
A. STAMPING: .02" [0,5] THK COPPER, TIN PLATED  
B. HOUSING: NYLON, YELLOW
- SEE [www.panduit.com](http://www.panduit.com) FOR PACKAGE QUANTITIES INDICATED BY PART NUMBER SUFFIX
- DIMENSIONS IN BRACKETS ARE METRIC EQUIVALENT.

REV	DATE	BY	CHK	APR	DESCRIPTION	ECN
07	04-25-13	JBN	RTFI	RTFI	UPDATED DRAWING BORDER & TITLE BLOCK	A41337

TITLE <b>BARREL NYLON INSULATED BUTT SPLICE #26-22</b>			
CUSTOMER DRAWING			
ITEM REVISION NAME <b>N41337BA/07</b>		<b>PANDUIT</b>	
DATASET FILE NAME <b>N41337BA_DC/07A</b>			
UNLESS OTHERWISE SPECIFIED, DIMENSIONAL TOLERANCES ARE: IN [mm]		MATERIAL: <b>SEE NOTES</b>	
.x $\pm$ .1 [2.54]      .xxx $\pm$ .005 [0.127] .xx $\pm$ .01 [.25]      ANGLES $\pm$ 5°		DRAWING NUMBER: <b>A41337</b>	
DRAWN BY <b>DAW</b>		DATE -	SCALE <b>NONE</b>
SHT 1 OF 1		SIZE <b>A</b>	

D101000DA/15