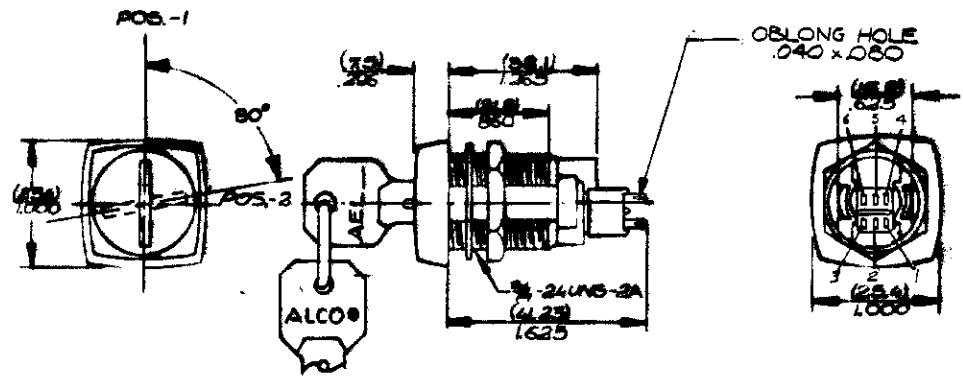


PANEL CUTOUT

SPECIFICATIONS :
CONTACT RATING :
 SILVER - 3A @ 125 VAC OR 25 VDC (RESISTIVE)
 GOLD PLATING - 0.4 VA MAX @ 20 VDC OR PEAK AC
CONTACT RESISTANCE :
 SILVER - 10 MILLIOHMS MAX.
 GOLD PLATING - 20 MILLIOHMS MAX.
INSULATION RESISTANCE :
 SILVER - 1,000 MEGOHMS MIN.
 GOLD PLATING - 1,000 MEGOHMS MIN. @ 500 VDC
DIELECTRIC STRENGTH : 1,000 VOLTS RMS @ SEA LEVEL



(MM) ² REFERENCE: 80984 (HEX NUT)
 INCH

SKT-33-06	POSITION 1 AND 2	SOLD OVER NICKEL	2 TO 1 5 TO 4	2 TO 3 5 TO 6
SKT-33-12	POSITION 1 ONLY	SOLD OVER NICKEL	2 TO 1 5 TO 4	2 TO 3 5 TO 6
SKT-33-2	POSITION 1 AND 2	SOLID SILVER	2 TO 1 5 TO 4	2 TO 3 5 TO 6
SKT-33-1	POSITION 1 ONLY	SOLID SILVER	2 TO 1 5 TO 4	2 TO 3 5 TO 6
MODEL NO. (*)	REMOVE KEY INS.	SWITCH CONTACTS	POS. 1	POS. 2
TERMINAL DESIGNATION NUMBERS ARE FOR REFERENCE ONLY, AND DO NOT APPEAR ON SWITCHES.				

2	ECD 4195	MM	1-10-92	1/14/92	±.010 INCH ±.025 MM ± 5° ANGLE	DIMENSIONS IN	DO NOT SCALE DRAWING	TITLE	KEYLOCK SWITCH	
B	ECO # 2024			7/24/81	DRAWN B. BUCKHOT 5/6/81	MATERIAL	SCALE	SKT-33-(*) SERIES		
A	ECO # 1603	E.C.		10/1/81	CHECKED	FINISH	1/1	ALCO ELECTRONIC PRODUCTS, INC.		DWG. NO.
REV.	DESCRIPTION		DATE	APPROVED	9/7/81	ALCO ELECTRONIC PRODUCTS, INC. North Andover, Massachusetts 01845		40063	SHEET OF	REV. OF