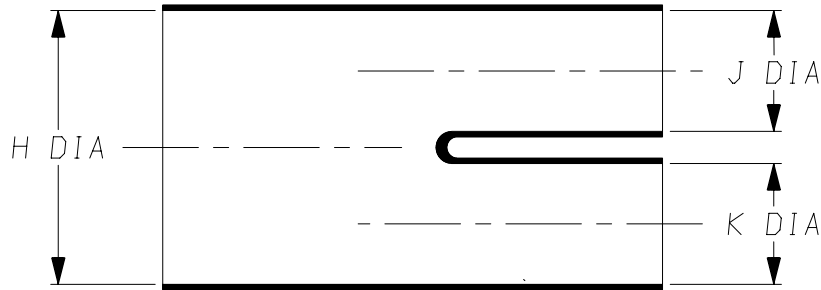
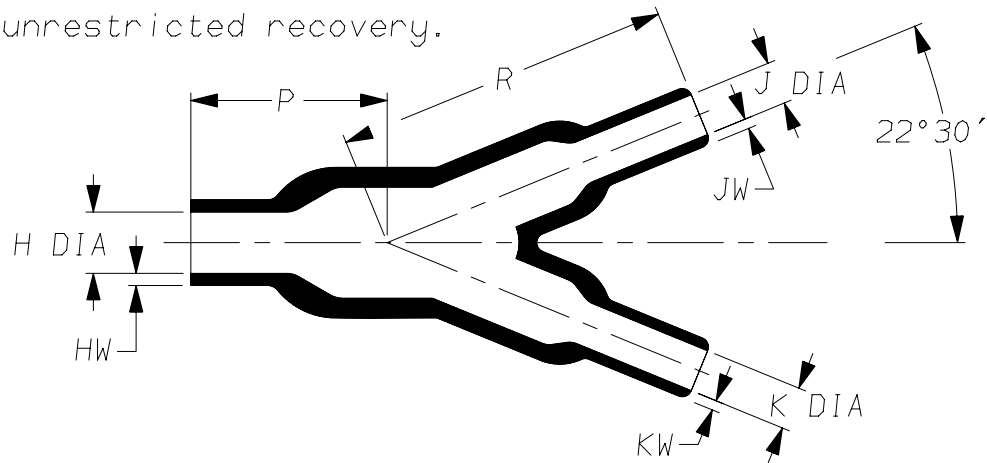


a) Part as supplied

382A034-\*G06



b) Part after unrestricted recovery.



DIMENSIONS in millimetres  
(in inches, for reference)

Part Number	H		J		K		P	R	HW	JW	KW
	Min	Max	Min	Max	Min	Max	±10%	±10%	±20%	±20%	±20%
	a	b	a	b	a	b	b	b	b	b	b
382A034-*G06	39 (1.54)	18.0 (0.71)	27 (1.06)	12.4 (0.49)	27 (1.06)	12.4 (0.49)	46 (1.81)	79 (3.11)	3.0 (0.12)	2.5 (0.10)	2.5 (0.10)

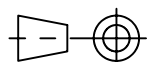
#

This is a trimmed variant  
Modified dimensions are shown thus:- #

Copyright (!)

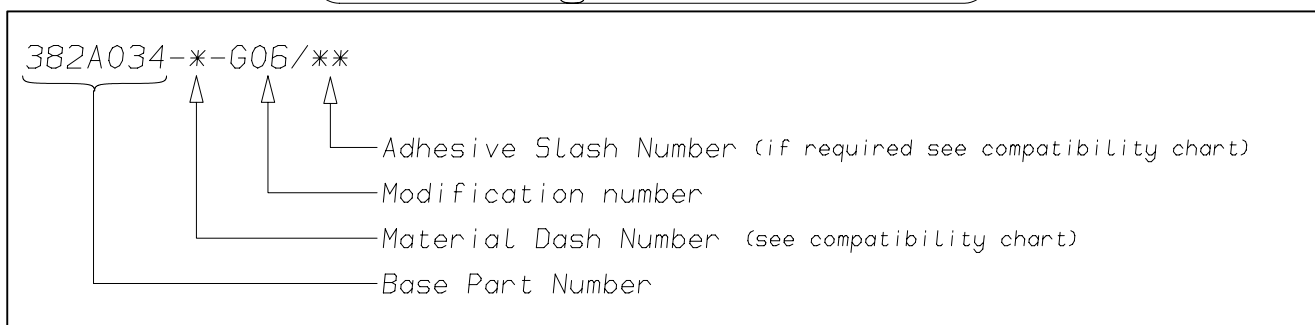
The copyright in this drawing is the property of Tyco Electronics UK Ltd. The drawing is issued on the condition that it is not copied, reproduced or disclosed to a third party, either in whole or in part without the prior written consent of Tyco Electronics UK Ltd.

Drawn A.LILLEY. Checked Issue 3 Date November 2006 Conforms to ISO Recommendations  
Approval Design MKTG. Q.A. 3rd Angle Projection Not to Scale



<b>Raychem</b>		<b>Specification</b>	Part Number
		<b>Control Drawing</b>	382A034-*G06 Issue 3
Iss.	Date	E.C.R. No.	Details of Change
2	October 2000	CR00-HM-0011	Dimension "R" was 82
3	November 2006	CR06-HM-012	Imperial dimensions added
3	November 2006	CR06-DM-104	-12 Material description name changed

### (Ordering Information)



### (COMPATIBILITY CHART)

Material Dash Number	Material Description	SPEC Number	Coating Slash Number
-3	POLYOLEFIN, SEMI-RIGID	RT-301, RK-6703	/42, /86, /180
-4	POLYOLEFIN, FLEXIBLE	RT-1304 RT-1050	/42, /86, /180
-6	SILICON	RT-602, RK-6706	N/A
-12	FLUOROELASTOMER, FLEXIBLE	RT-1312, RW-2071	/225
-25	ELASTOMER, FLUID RESISTANT	RT-1325, RK-6713	/42, /86, /225
-100	ZERO HALOGEN	RT-1323, RK-6717	/86, /180
-130	POLYOLEFIN, COMMERCIAL FLEXIBLE	RW-2008	/42

#### NOTES

- ① As supplied dimensions are for uncoated parts, when coating is added entry diameters will reduce by 1.5mm Max.

Tyco Electronics UK Ltd. Faraday Road, Swindon, Wiltshire, SN3 5HH England Telephone: (01793) 528171 Fax: 572516	Tyco Electronics Corporation 300, Constitution Drive, Menlo Park, CA 94025 USA Telephone (650) 361-3860 Fax: (650) 361-5579
Cage Code K1010	Cage Code 06090