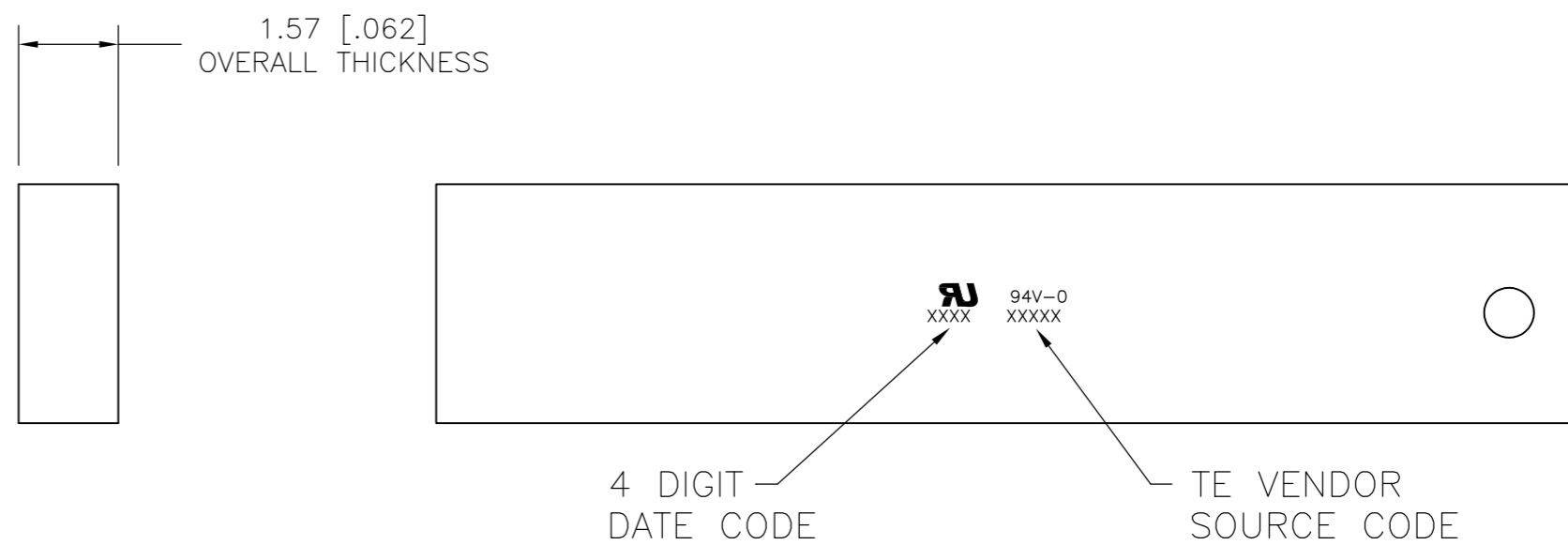
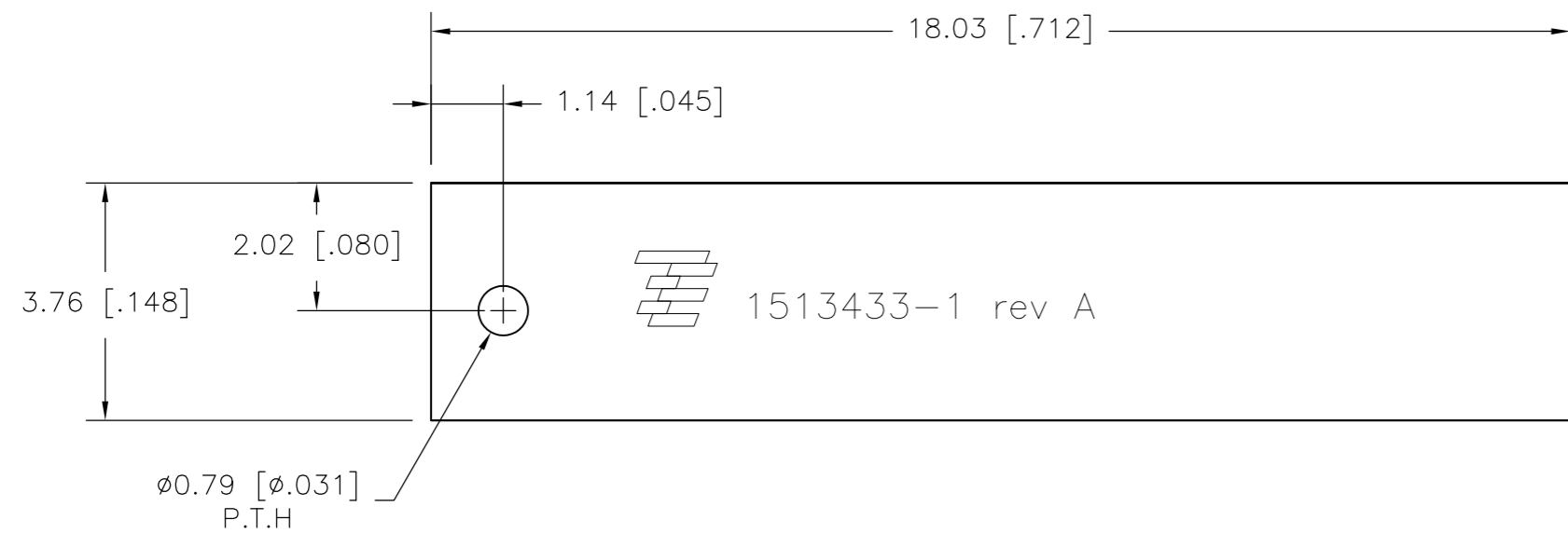


THIS DRAWING IS UNPUBLISHED. RELEASED FOR PUBLICATION  
 © COPYRIGHT BY TYCO ELECTRONICS CORPORATION. ALL INTERNATIONAL RIGHTS RESERVED.

| LOC | DIST | REVISIONS            |           |     |      |
|-----|------|----------------------|-----------|-----|------|
| P   | LTR  | DESCRIPTION          | DATE      | DWN | APVD |
| -   | -    |                      |           |     |      |
|     | A    | RE-DRAWN AND UPDATED | 21OCT2009 | DW  | GG   |



1513433-1  
AS SHOWN

NOTES: UNLESS OTHERWISE SPECIFIED.

- FABRICATE TO MEET IPC - 6012, CLASS 2.  
INSPECT TO MEET IPC - A - 600, CLASS 2.
- PRIMARY SIDE AND SECONDARY SIDE SHOWN.
- MATERIAL: GETEK 8 PLY (7628) 1.49 THK.  
GRADE RG200D 1/2 OZ. COPPER BOTH SIDES.  
DIELECTRIC CONSTANT @ 1MHZ 4.2±0.1.
- FINISH:  
A: PLATING: 1/2 OZ COPPER.  
B: SOLDERMASK OVER BARE COPPER (SMOBC).  
C: MASK BOTH SIDES OF PCB WITH LPI SOLDERMASK.  
SOLDERMASK COLOR: NATURAL GREEN.  
D: E.N.I.G PLATING
- TWO PLACE TOLERANCES: ±0.23
- PACKAGING: SINGULATED PARTS TO BE VACUUM PACKED IN BULK.
- PARTS ARE COMPLIANT TO ROHS STANDARDS PER TYCO ELECTRONICS STANDARD TEC-138-702.
- CONSULT TYCO ELECTRONICS DATA SHEET DS1513433
- CONTACT TYCO ELECTRONICS ENGINEERING PRIOR TO DESIGNING INTO AN APPLICATION

|   |             |                                  |   |                    |
|---|-------------|----------------------------------|---|--------------------|
| THIS DRAWING IS A CONTROLLED DOCUMENT.                                      |             | DWN<br>D.WALLACE<br>21OCT2009    | Tyco Electronics Corporation<br>Harrisburg, PA 17105-3608 |                    |
| DIMENSIONS:<br>mm [INCHES]  |             | CHK<br>G.GRIFFITH<br>21OCT2009   | NAME<br>US PCS<br>ANTENNA 1850-1990 MHz                   |                    |
| TOLERANCES UNLESS OTHERWISE SPECIFIED:                                      |             | APVD<br>G.GRIFFITH<br>21OCT2009  | SIZE<br>A2  | CAGE CODE<br>00779 |
| 0 PLC ± -<br>1 PLC ± -<br>2 PLC ± -<br>3 PLC ± -<br>4 PLC ± -<br>ANGLES ± - |             | PRODUCT SPEC<br>APPLICATION SPEC | DRAWING NO<br>C=1513433                                   | RESTRICTED TO<br>- |
| MATERIAL<br>-   | FINISH<br>- | WEIGHT<br>-                      | SCALE<br>1:1  | SHEET<br>1 OF 1    |
| CUSTOMER DRAWING  |             |                                  | REV<br>A  |                    |