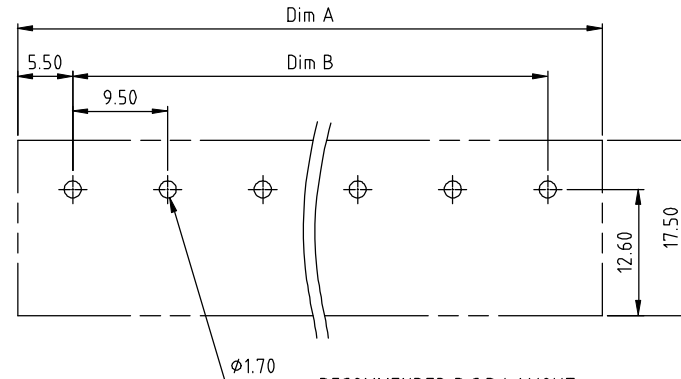
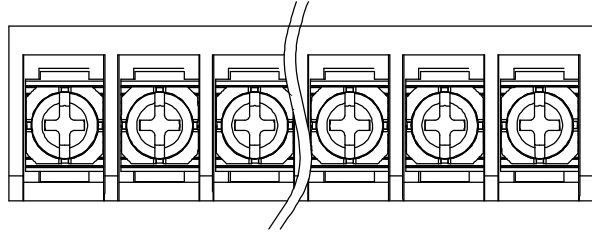
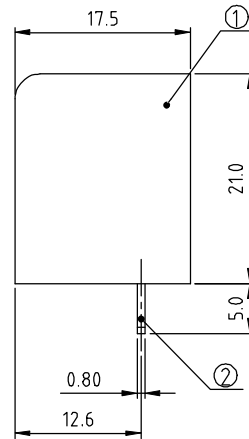
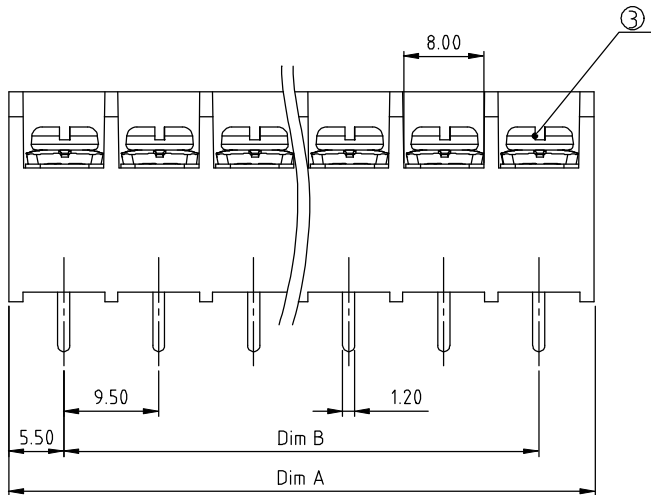


PRODUCT NUMBER	PITCH
YK44 Axx0x0JOG	9.50 mm



RECOMMENDED P.C.B LAYOUT
TOP VIEW



- MATERIALS & ELECTRICAL
- RATED VOLTAGE & CURRENT: 300V 25A
 - WITHSTAND VOLTAGE: AC2000V/min
 - INSULATION RESISTANCE: 1000 M Ω OR MORE AT DC 500 V
 - OPERATING TEMPERATURE RANG: -40 °C ~ +115 °C
 - SCREW TORQUE VALUE: 10.54 Lb-In
 - WIRE RANGE: 22-12 AWG
 - 1) HOUSING: Thermoplastic, UL 94 V-0 BLACK
 - 2) TERMINAL: BRASS, 0.8t
 - 3) TERMINAL SCREWS: STEEL, M3.5

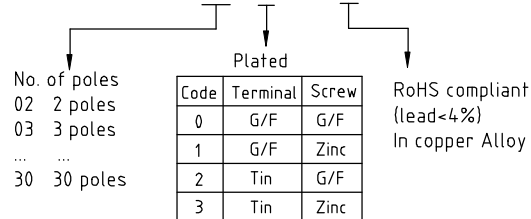
DIMENSION

Dim A	N \times 9.5+1.5
Dim B	(N-1) \times 9.5

N=Number of poles

Poles	Tolerance
2p-4p	\pm 0.20
5p-8p	\pm 0.25
9p-16p	\pm 0.35
17p-23p	\pm 0.40
24p-30p	\pm 0.50

PART NO.: YK 44Axx 0 x 0 JOG



mat'l. code		surface	tolerance	projection	product family
ltr ecn no dr date		ASME Y14.5	ASME Y14.5		TERMINAL BLOCK
		tolerances unless otherwise specified		MM	title
		angles	X. \pm 0.5		TERMINAL BLOCK
		fil	X.X \pm 0.3		BARRIER TYPE
		X' \pm 1"	X.XX \pm 0.1	scale	dwg no
		dr	EVAN LU	061614	sheet 1 of 1
		enr	EVAN LU	061614	size
		chr	HANKE FENG	061614	A4
		appd	SHI JUN	061614	YK44Axx0x0JOG
sheet index		revision sheet	A 1		type
					CUSTOMER Drawing