

IEC Appliance Inlet C8 with Filter, Front Side Mounting

Standard- or Medical-Filter



Snap-in mounting from front side

Screw-on mounting from front side



**Description**

- Panel Mount :  
Screw-on or snap-in mounting from front side
- 2 Functions :  
Appliance Inlet Protection class II , Line filter in standard and medical version
- Solder terminals or quick connect terminals

**Approvals**

- VDE Certificate Number: 40029278
- UL File Number: E72928

**Characteristics**

- Compact high performance filter
- Designed for standard and medical applications
- Suitable for use in equipment according to IEC/UL 60950
- Suitable for use in medical equipment according to IEC/UL 60601-1

**Other versions on request**

- Standard version without X-capacitor
- Polarized C8 connector

**References**

Alternative: version without line filter [0721-PS](#); [2576](#); [2578](#)

**Weblinks**

[pdf datasheet](#), [html-datasheet](#), [General Product Information](#), [RoHS](#), [CHINA-RoHS](#), [REACH](#), [Distributor-Stock-Check](#), [Accessories](#), [Detailed request for product](#)

**Technical Data**

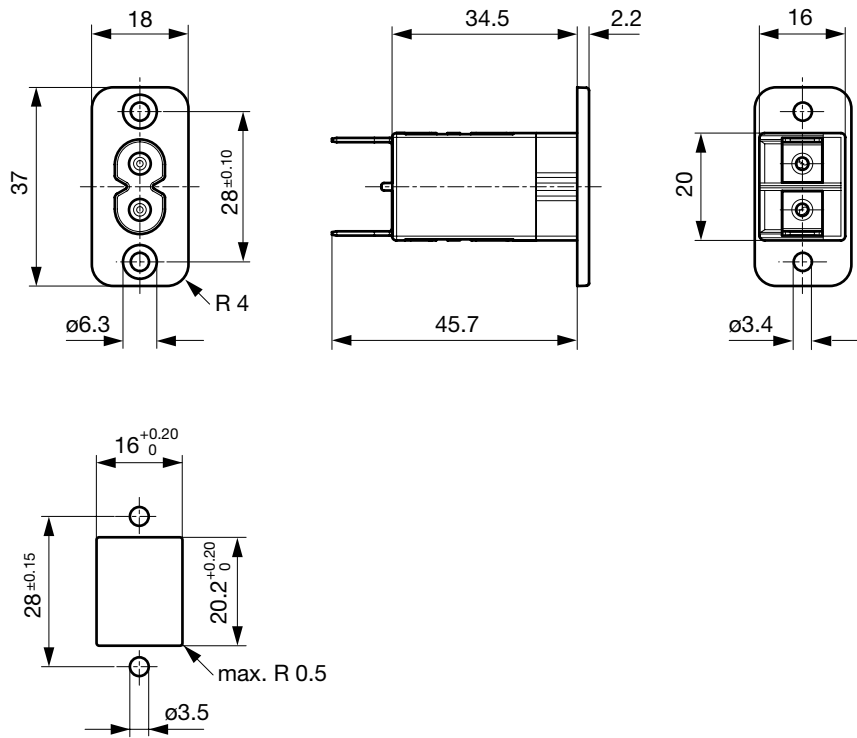
|                                 |                                                                           |
|---------------------------------|---------------------------------------------------------------------------|
| Ratings IEC                     | 0.5 - 2.5A @ Ta 40 °C / 250VAC; 50Hz                                      |
| Ratings UL/CSA                  | 0.5 - 6A @ Ta 40 °C / 250VAC; 60Hz                                        |
| Dielectric Strength             | > 1.7 kVDC between L-N<br>> 4 kVDC between L/N-PE<br>Test voltage (2 sec) |
| Impulse Withstand Voltage       | > 2.5 kV between L-N                                                      |
| Allowable Operation Temperature | -25 °C to 85 °C                                                           |
| Climatic Category               | 25/085/21 acc. to IEC 60068-1                                             |
| IP-Protection                   | from front side IP 40 acc. to IEC 60529                                   |
| Protection Class                | Suitable for appliances with protection class II acc. to IEC 61140        |
| Terminal                        | solder pin or quick connect terminals<br>6.3 x 0.8 or 4.8 x 0.8 mm        |
| Panel Thickness s               | Screw<br>Mounting screw torque max 0.5Nm<br>Snap-in 1 mm to 3mm           |
| Material: Housing               | Thermoplastic, black, UL 94V-0                                            |

|                         |                                                                                                                           |
|-------------------------|---------------------------------------------------------------------------------------------------------------------------|
| appliance inlet/-outlet | C8 acc. to IEC 60320-1<br>UL 498, CSA C22.2 no. 42 (for cold conditions) pin-temperature 70 °C, 2.5A, Protection Class II |
| Line Filter             | Standard and Medical Version, IEC 60939, UL 1283, CSA C22.2 no. 8<br><a href="#">Technical Details</a>                    |
| MTBF                    | > 6'700'000h acc. to MIL-HB-217 F                                                                                         |

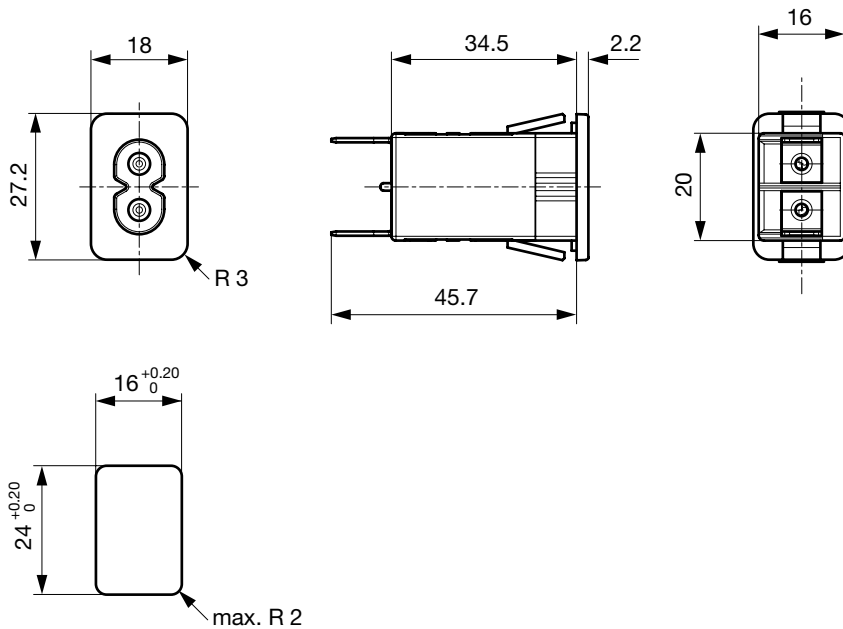
Detailed information on product approvals, code requirements, usage instructions and detailed test conditions can be looked up in [General Product Information](#)

**Dimension**

Screw-on mounting from front side



Snap-in mounting from front side

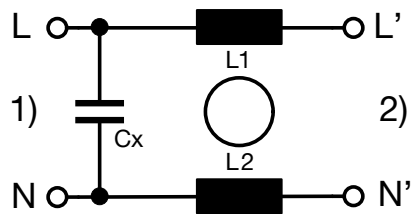


**Technical Data of Filter-Components**

| Rated Current [A] | Filter-Type                 | Inductances L [mH] | Capacitance CX [nF] | Capacitance CY [nF] | R [MΩ] |
|-------------------|-----------------------------|--------------------|---------------------|---------------------|--------|
| 1                 | Standard Version without Cx | 2 x 8              | -                   | -                   | -      |
| 0.5               | Standard Version            | 2 x 18             | 100                 | -                   | -      |
| 1                 | Standard Version            | 2 x 8              | 100                 | -                   | -      |
| 2.5               | Standard Version            | 2 x 1.2            | 100                 | -                   | -      |
| 4                 | Standard Version            | 2 x 0.8            | 100                 | -                   | -      |
| 6                 | Standard Version            | 2 x 0.3            | 100                 | -                   | -      |
| 0.5               | Medical Version (M5)        | 2 x 18             | 100                 | -                   | 1      |
| 1                 | Medical Version (M5)        | 2 x 8              | 100                 | -                   | 1      |
| 2.5               | Medical Version (M5)        | 2 x 1.2            | 100                 | -                   | 1      |
| 4                 | Medical Version (M5)        | 2 x 0.8            | 100                 | -                   | 1      |
| 6                 | Medical Version (M5)        | 2 x 0.3            | 100                 | -                   | 1      |

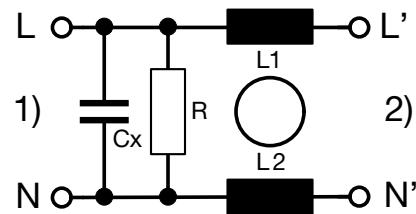
**Diagrams**

Standard version



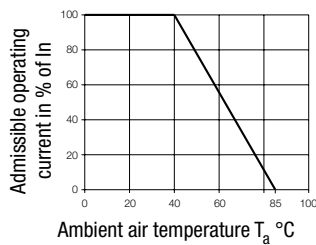
1) Line  
2) Load

Medical version M5



1) Line  
2) Load

**Derating Curves**

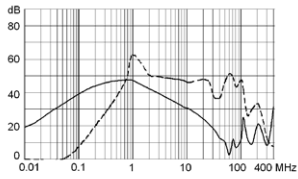


**Attenuation Loss**

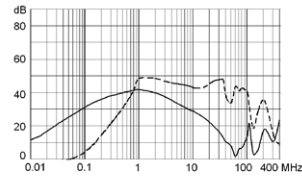
Standard version

--- 50Ω differential mode    \_\_\_ 50Ω common mode

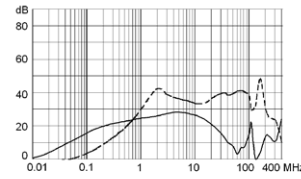
0.5 A



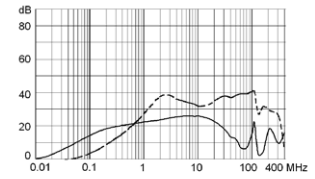
1 A



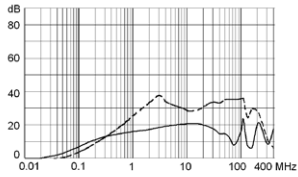
2.5 A



4 A

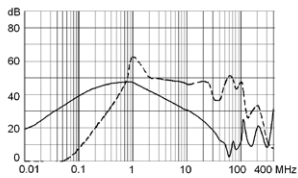


6 A

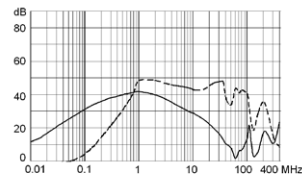


Medical version (M5)

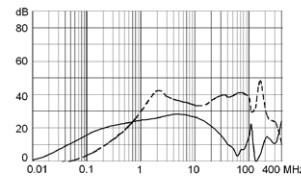
0.5 A



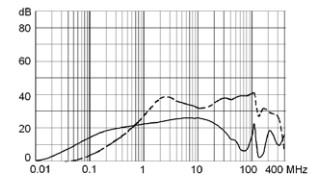
1 A



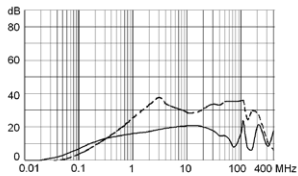
2.5 A



4 A



6 A



**All Variants**

| Rated Current [A] | Filter-Type                 | Mounting    | Terminal                            | Order Number |
|-------------------|-----------------------------|-------------|-------------------------------------|--------------|
| 1                 | Standard Version without Cx | Snap-in 1.5 | Quick connect terminal 4.8 x 0.8 mm | 5008.2211    |
| 0.5               | Standard Version            | Snap-in 1.0 | Quick connect terminal 4.8 x 0.8 mm | 5008.1010    |
| 0.5               | Standard Version            | Snap-in 1.5 | Quick connect terminal 4.8 x 0.8 mm | 5008.2010    |
| 1                 | Standard Version            | Snap-in 1.5 | Solder terminal                     | 5008.2021    |
| 1                 | Standard Version            | Snap-in 1.5 | Quick connect terminal 6.3 x 0.8 mm | 5008.2001    |
| 1                 | Standard Version            | Snap-in 2.0 | Quick connect terminal 4.8 x 0.8 mm | 5008.3011    |
| 2.5               | Standard Version            | Screw       | Solder terminal                     | 5008.0022    |
| 2.5               | Standard Version            | Screw       | Quick connect terminal 6.3 x 0.8 mm | 5008.0002    |
| 2.5               | Standard Version            | Screw       | Quick connect terminal 4.8 x 0.8 mm | 5008.0012    |
| 2.5               | Standard Version            | Snap-in 1.0 | Quick connect terminal 4.8 x 0.8 mm | 5008.1012    |
| 2.5               | Standard Version            | Snap-in 1.5 | Solder terminal                     | 5008.2022    |
| 2.5               | Standard Version            | Snap-in 1.5 | Quick connect terminal 4.8 x 0.8 mm | 5008.2012    |
| 2.5               | Standard Version            | Snap-in 2.0 | Solder terminal                     | 5008.3022    |
| 2.5               | Standard Version            | Snap-in 2.0 | Quick connect terminal 6.3 x 0.8 mm | 5008.3002    |

| Rated Current [A] | Filter-Type          | Mounting    | Terminal                            | Order Number |
|-------------------|----------------------|-------------|-------------------------------------|--------------|
| 4                 | Standard Version     | Snap-in 1.5 | Quick connect terminal 4.8 x 0.8 mm | 5008.2014    |
| 6                 | Standard Version     | Screw       | Quick connect terminal 6.3 x 0.8 mm | 5008.0006    |
| 6                 | Standard Version     | Snap-in 1.0 | Quick connect terminal 4.8 x 0.8 mm | 5008.1016    |
| 6                 | Standard Version     | Snap-in 1.5 | Quick connect terminal 4.8 x 0.8 mm | 5008.2016    |
| 0.5               | Medical Version (M5) | Snap-in 1.0 | Quick connect terminal 4.8 x 0.8 mm | 5008.1110    |
| 1                 | Medical Version (M5) | Screw       | Quick connect terminal 4.8 x 0.8 mm | 5008.0111    |
| 1                 | Medical Version (M5) | Snap-in 1.0 | Quick connect terminal 4.8 x 0.8 mm | 5008.1111    |
| 1                 | Medical Version (M5) | Snap-in 2.0 | Quick connect terminal 4.8 x 0.8 mm | 5008.3111    |
| 2.5               | Medical Version (M5) | Snap-in 1.0 | Quick connect terminal 4.8 x 0.8 mm | 5008.1112    |
| 2.5               | Medical Version (M5) | Snap-in 2.0 | Quick connect terminal 6.3 x 0.8 mm | 5008.3102    |
| 4                 | Medical Version (M5) | Snap-in 1.0 | Quick connect terminal 4.8 x 0.8 mm | 5008.1114    |
| 4                 | Medical Version (M5) | Snap-in 1.5 | Quick connect terminal 4.8 x 0.8 mm | 5008.2114    |
| 6                 | Medical Version (M5) | Snap-in 1.0 | Quick connect terminal 4.8 x 0.8 mm | 5008.1116    |
| 6                 | Medical Version (M5) | Snap-in 1.5 | Quick connect terminal 4.8 x 0.8 mm | 5008.2116    |

Availability for all products can be searched real-time:<http://www.schurter.com/en/Stock-Check/Stock-Check-SCHURTER>

**Packaging unit** 20 Pcs

### Mating Outlets/Connectors

#### Category / Description

#### Power Cord Overview complete



|                                                                                                                                     |           |
|-------------------------------------------------------------------------------------------------------------------------------------|-----------|
| Cord Sets 2.5 A, IEC Connector, Black, 2.0 m, H03VVH2-F 2x0,75mm <sup>2</sup> , Connector IEC C7, 001500 mm, H03VVH2-F2G0.75, black | 6013.0474 |
| Cord Sets 2.5 A, IEC Connector, Black, 4.0 m, H03VVH2-F 2x0,75mm <sup>2</sup> , Connector IEC C7, 001500 mm, H05VVH2-F2G0.75, black | 6013.0478 |

[Power Cord further types to 5008](#)

#### Power Supply Cord Overview complete



|                                                                                                        |           |
|--------------------------------------------------------------------------------------------------------|-----------|
| Cord Sets 2.5 A, North America, Black, 2.0 m, SVT 2x18AWG, Connector IEC C7, 002500 mm, NISPT-2, black | 6010.5274 |
| Cord Sets 2.5 A, North America, Black, 4.0 m, SVT 2x18AWG, Connector IEC C7, 002500 mm, NISPT-2, black | 6010.5278 |

[Power Supply Cord further types to 5008](#)