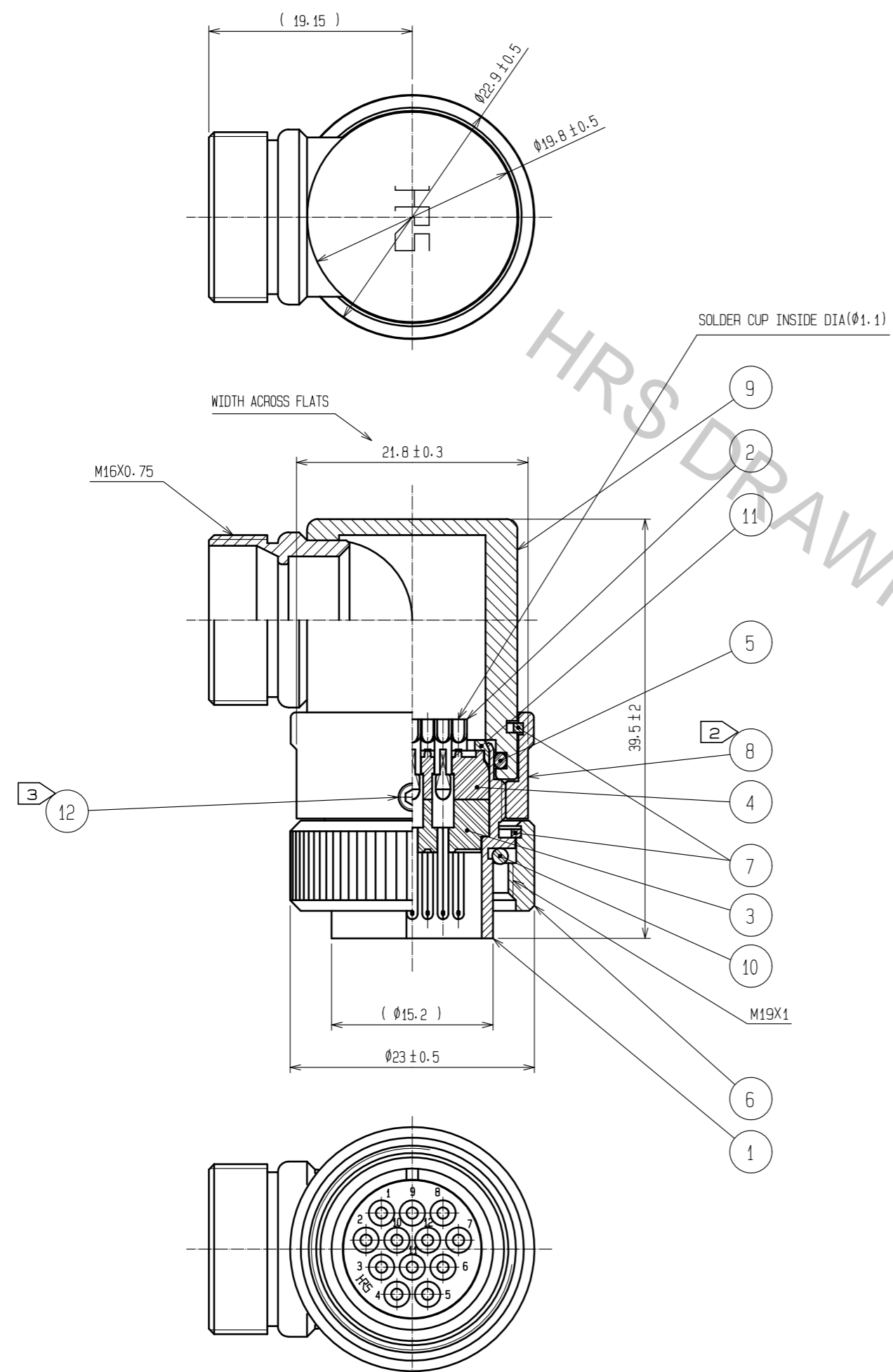


Aug.1.2018 Copyright 2018 HIROSE ELECTRIC CO., LTD. All Rights Reserved.
 In case that the application demands a high level of reliability, such as automotive,
 please contact a company representative for further information.



- NOTES
- 1 ROTATION EXAMPLES OF REF. NOS. ①, ⑧ AND ⑨ ARE SHOWN.
 - ② THE RECOMMENDED TIGHTEN TORQUE OF REF. NO. ⑧ TO BE 3 TO 4 N·m.
ADHESIVE LOCTITE 243, OR EQUIVALENT IS RECOMMENDED TO PREVENT REF. NO. ⑧ FROM LOOSENING.
 - ③ THE RECOMMENDED TIGHTEN TORQUE OF REF. NO. ⑫ TO BE 0.2 TO 0.3 N·m.
ADHESIVE LOCTITE 243, OR EQUIVALENT IS RECOMMENDED TO PREVENT REF. NO. ⑫ FROM LOOSENING.
 - ④ THIS PRODUCT TO BE USED WIHT CABLECLAMP, JR13WCC-*(72).
* DESIGNETE DIAMETER(mm) OF APPLICABLE CABLE.

6	BRASS	NICKEL PLATING	12	STAINLESS STEEL	
5	ACRYLONITRILE-BUTADIENE RUBBER	(GRAY)	11	POLYACETAL	(WHITE)
4	DIALLYL PHTHALATE	(BLACK) UL94V-0	10	ACRYLONITRILE-BUTADIENE RUBBER	(GRAY)
3	DIALLYL PHTHALATE	(BLACK) UL94V-0	9	BRASS	NICKEL PLATING
2	COPPER ALLOY	SILVER PLATING 2μm min.	8	BRASS	NICKEL PLATING
1	BRASS	NICKEL PLATING	7	PHOSPHOR BRONZE	NICKEL PLATING
NO.	MATERIAL	FINISH . REMARKS	NO.	MATERIAL	FINISH . REMARKS

UNITS mm		SCALE 2 : 1	COUNT 1	DESCRIPTION OF REVISIONS DIS-C-00002192	DESIGNED HY. KISHI	CHECKED HY. KOBAYASHI	DATE 18.04.10
HRS HIROSE ELECTRIC CO., LTD.		APPROVED : HY. KOBAYASHI	18.02.27	DRAWING NO. EDC-113196-31-00			
		CHECKED : HY. KOBAYASHI	18.02.27	PART NO. RM15WTLP-12P(31)			
		DESIGNED : HY. KISHI	18.02.26	CODE NO. CL109-0997-9-31			
		DRAWN : HY. KISHI	18.02.26				