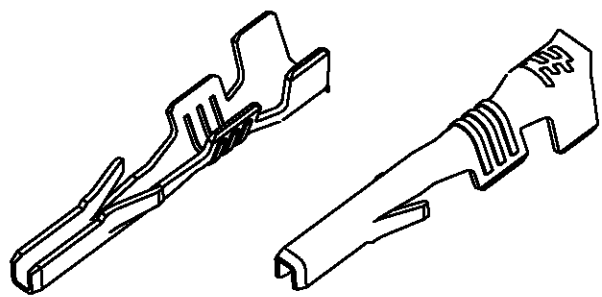
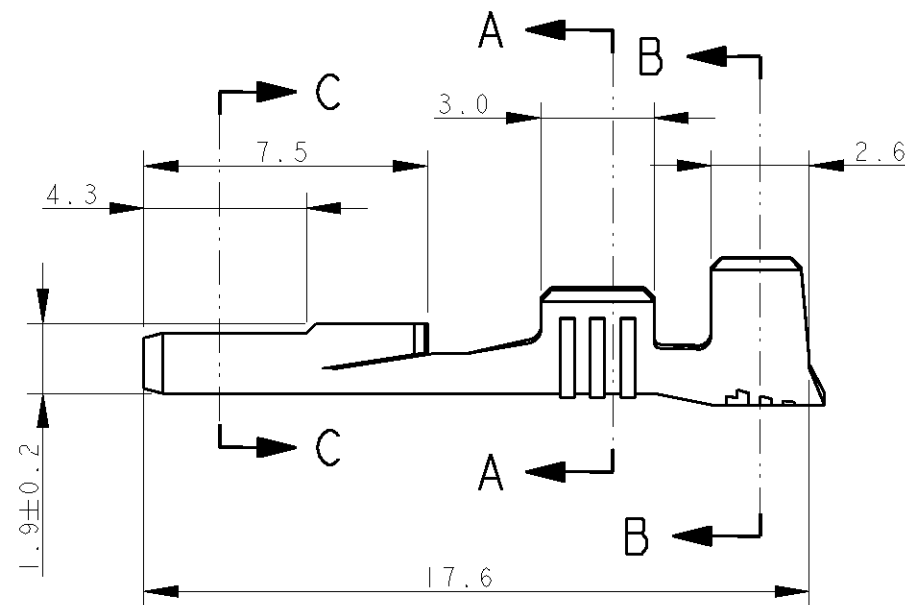
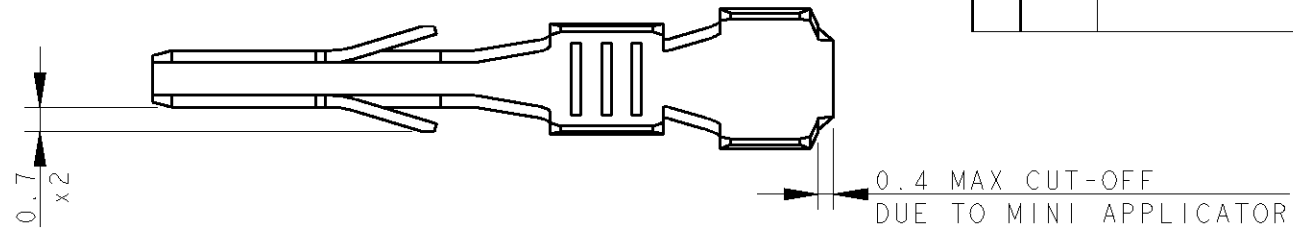
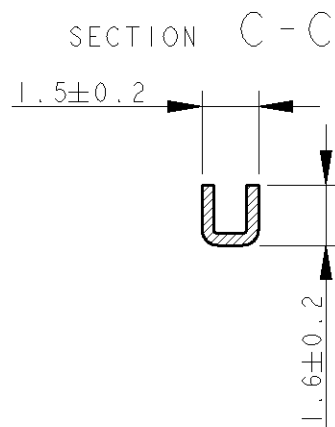


THIS DRAWING IS UNPUBLISHED. RELEASED FOR PUBLICATION 20
 © COPYRIGHT 20 BY TYCO ELECTRONICS CORPORATION. ALL RIGHTS RESERVED.

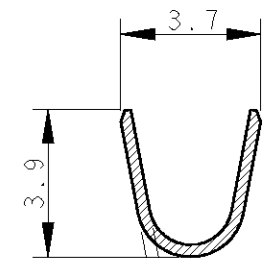
LOC	DIST	REVISIONS			
P	LTR	DESCRIPTION	DATE	DWN	APVD
	0	FIRST EMISSION	07MAY2007	HY	GT
	1	CONFIRMING P/N	24JUL2007	HY	GT
	A	RELEASED	28NOV2007	HY	GT



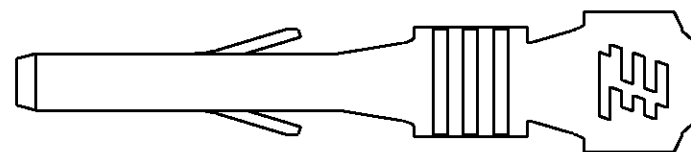
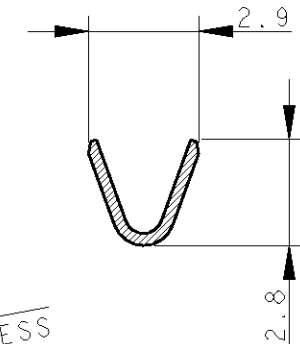
SCALE 3:1



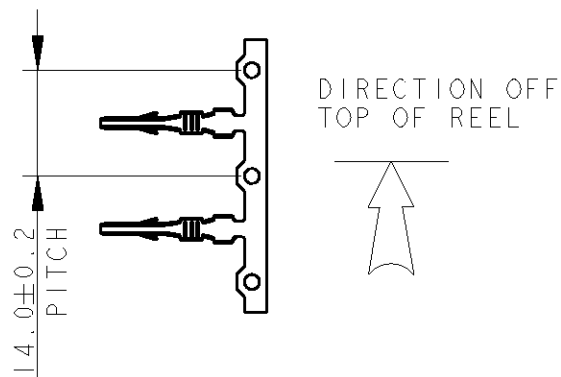
SECTION B-B



SECTION A-A



1 REELED ON 24" CARTON TYPE REEL P/N 1-781377-7 WITH INTERLEAVE PAPER STRIP P/N 782504-7, Q.TY/REEL 3.000, CARTON BOX P/N 973051-1 CONTAINING 4 REELS.



2) WIRE RANGE 0.3-0.8 sqmm
 INSULATION RANGE 1.4-2.5 Ø

NOTE	PRE-TIN PLATED FINISH	BRASS MATERIAL	293322-1 PART NO	A REV
------	-----------------------	----------------	------------------	-------

<small>THIS DRAWING IS A CONTROLLED DOCUMENT FOR TYCO ELECTRONICS CORPORATION IT IS SUBJECT TO CHANGE AND THE CONTROLLING ENGINEERING ORGANIZATION SHOULD BE CONTACTED FOR THE LATEST REVISION.</small>		DWN H. Yaali	07MAY2007	AMP Italia S.p.A. C.so F.lli Cervi, 15 COLLEGNO (TO)
DIMENSIONS: mm		CHK -	-	
		TOLERANCES UNLESS OTHERWISE SPECIFIED: 0 PLC ±- 1 PLC ±0.3 2 PLC ±- 3 PLC ±- 4 PLC ±- ANGLES ±2°		NAME CRIMPED TAB CONTACT P.C.B. INTERFACE
MATERIAL SEE TABLE		PRODUCT SPEC - APPLICATION SPEC - WEIGHT -		SIZE A300779
FINISH SEE TABLE		CUSTOMER DRAWING		DRAWING NO C=293322
		SCALE 5:1		RESTRICTED TO -
		SHEET 1 OF 1		REV A