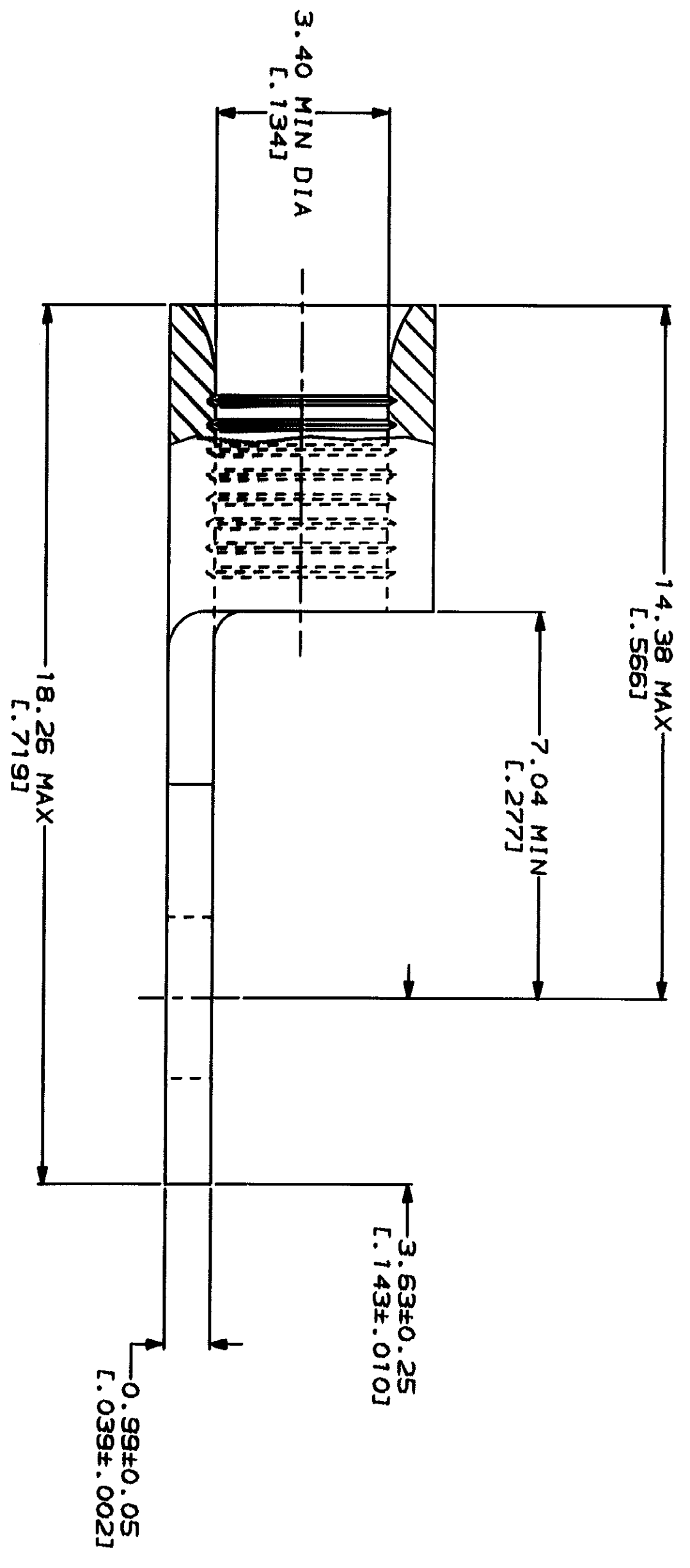
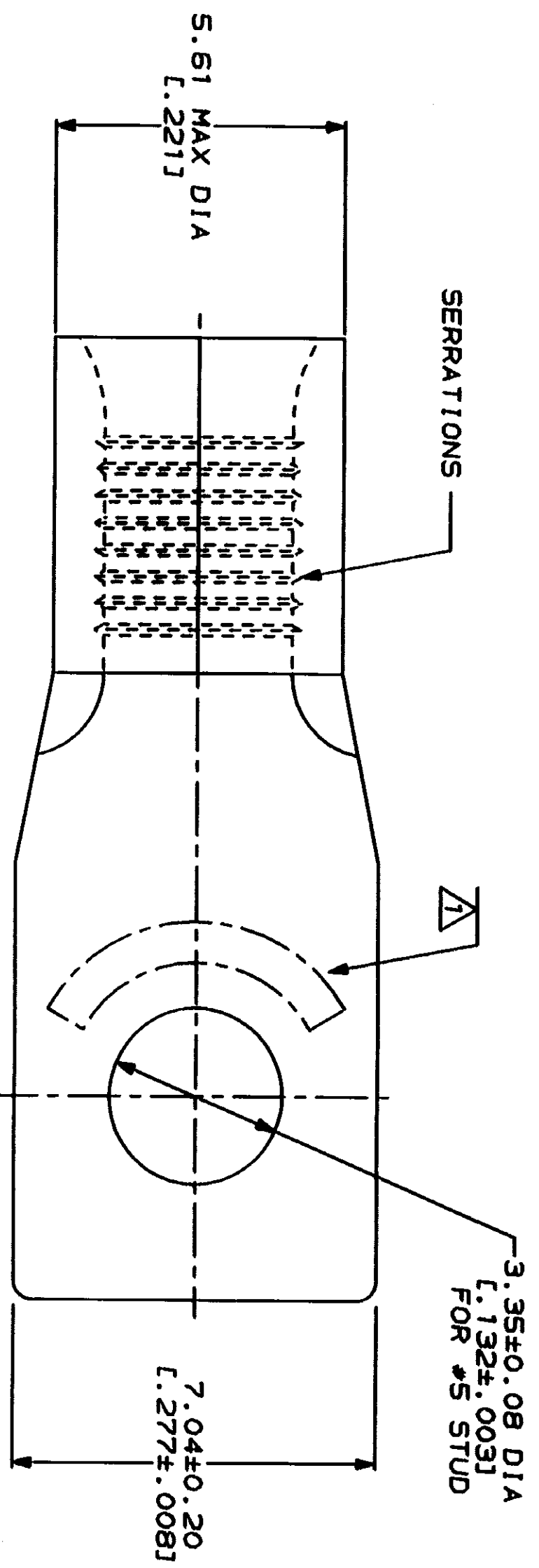


LOC	DIST	ZONE	LTN	DESCRIPTION	DATE	APPD
G	14	A	1	REVISED PER 0720-0230-93		

REVISIONS	
NO.	DESCRIPTION
1	REVISED PER 0720-0230-93

**METPRIG**  
DIMENSIONS LISTED IN mm [ INCHES ]



<b>AMP</b> WIRE RANGE	<b>UL</b> E13298 Listed
12-10 AWG STRANDED	12-10 AWG STRANDED
<b>LR7189</b> Certified	MILITARY P/N AND CLASS
NOT CERTIFIED	NOT APPLICABLE

△ STAMP AMP 12-10\* APPROX AS SHOWN

**AMP INCORPORATED  
CUSTOMER SERVICE SYSTEMS**

FOR ADDITIONAL PRODUCT INFORMATION OR COPIES OF DRAWINGS AND TECHNICAL DOCUMENTS  
1-800-522-6752

FOR APPLICATION TOOLING INFORMATION  
1-800-722-1111

FOR ORDER ENTRY  
1-800-526-5142

MAX RECOMMENDED OPERATING TEMPERATURE: 170°C MAX

VOLTAGE RATING: NOT APPLICABLE

WIRE CROSS SECTIONAL AREA RANGE: 2.62-6.64mm<sup>2</sup> [S, 180-13, 100] CIR MILS STRANDED

THIS DRAWING IS A CONTROLLED DOCUMENT FOR THE CUSTOMER. IT IS THE CUSTOMER'S RESPONSIBILITY TO CONTROL THE DOCUMENT AND TO NOTIFY AMP OF ANY CHANGES TO THE LATEST REVISION.

DO NOT SCALE PRINT. UNLESS SPECIFIED DIMENSIONS IN THIS DRAWING ARE IN INCHES. TOLERANCES ON:  
1. DIMENSIONS ON 1 PLG DEC ± .005  
2. DIMENSIONS ON 2 PLG DEC ± .002  
3. DIMENSIONS ON 3 PLG DEC ± .001

MATERIAL: COPPER PER ASTM B-152 ANNEALED

FINISH: TIN PLATE  
0.00254 [0.000100] MIN THK PER MIL-T-10727

DR 1-28-93 TA BRINKMAN

CHK 1-28-93 DA PATTERSON

APPD 1-28-93 DE MILLER

APPD 1-28-93 JL HECKLEY

PRODUCT SPEC

APPLICATION SPEC

**AMP** AMP Incorporated  
Harrisburg, PA 17105-3608

**TERMINAL, RECTANGULAR  
TONGUE, BUDGET**

SIZE: 00779  
CAGE CODE: 00779  
DRAWING NO: 327953  
SCALE: 10:1

327953  
PART NO

327953