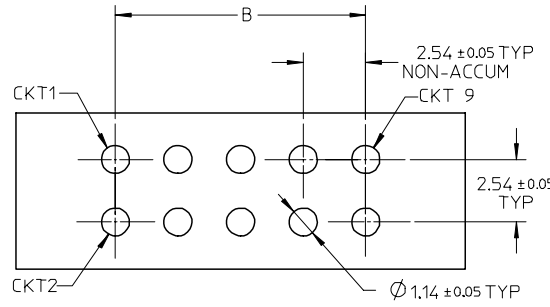
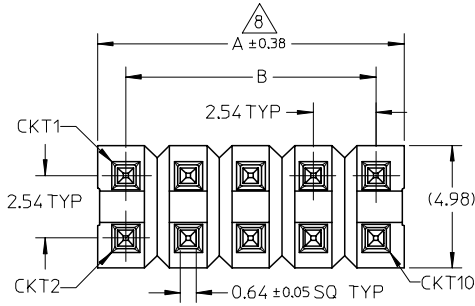
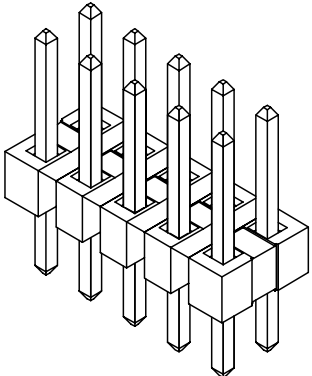
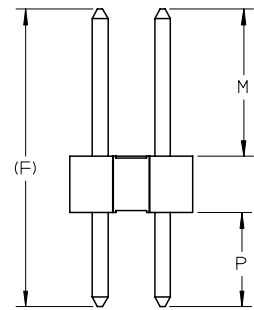
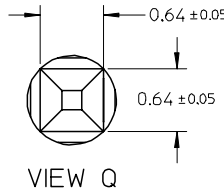
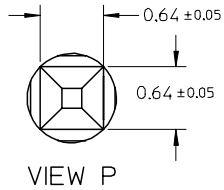
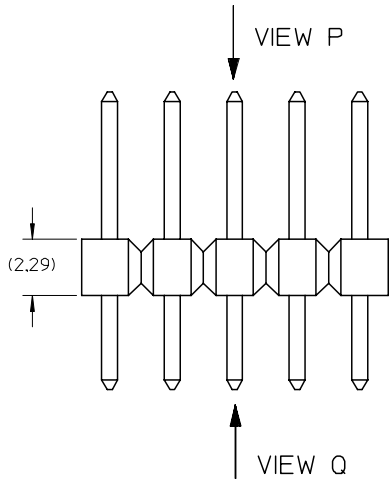


10 9 8 7 6 5 4 3 2 1



RECOMMENDED PCB LAYOUT

- NOTES:
- MATERIAL:
HSG: LCP, GLASS-FILLED, UL94V-0, COLOR: BLACK
PIN: 0.64MM SQ PIN, COPPER ALLOY
 - PLATING TYPE:
(1) : 0.381 μm MIN. GOLD PLATE ON CONTACT AND 1.905 μm MIN. TIN ON SOLDERTAIL OVER 1.270 μm MIN. NICKEL OVERALL.
(2) : 0.762 μm MIN. GOLD PLATE ON CONTACT AND 1.905 μm MIN. TIN ON SOLDERTAIL OVER 1.270 μm MIN. NICKEL OVERALL.
(3) : 2.540 μm MIN. TIN IN SELECTED AREA OVER 1.270 μm MIN. NICKEL OVERALL.
 - THE ABOVE 10 CKT IS FOR ILLUSTRATION PURPOSE ONLY.
 - FOR PACKAGING OPTION PLEASE REFER TO THE TABLE.
 - RECOMMENDED PCB THICKNESS 1.60MM.
 - PRODUCT SPECIFICATION: PS-87920-019
 - WAFER TO BE FLAT WITHIN 0.003mm/mm
 - IRREGULAR CIRCUIT CUTOFF WITHIN BREAKAWAY SECTION IS PERMISSIBLE. CUTTING OR CHIPPING OF THE MAIN BODY IS NOT ACCEPTABLE.
 - PARTS ARE NOT STACKABLE ON 2.54 CENTER
 - PACKAGING SPECIFICATION:
TRAY: PK-89990-489
BULK: PK-89990-491



EWB# 1010 & 1021 EC NO: S2007-0182 DRWNS:SKL IM01 2006/09/11 CHKD:CWLAM 2006/09/12 APPR:KWLEE 2006/09/13	QUALITY SYMBOLS	GENERAL TOLERANCES (UNLESS SPECIFIED)	DIMENSION STYLE	SCALE	DESIGN UNITS	THIRD ANGLE PROJECTION															
	$\nabla=0$ $\sphericalangle=0$	<table border="1"> <thead> <tr> <th></th> <th>mm</th> <th>INCH</th> </tr> </thead> <tbody> <tr> <td>4 PLACES</td> <td>± ---</td> <td>± ---</td> </tr> <tr> <td>3 PLACES</td> <td>± ---</td> <td>± ---</td> </tr> <tr> <td>2 PLACES</td> <td>± 0.2</td> <td>± ---</td> </tr> <tr> <td>1 PLACE</td> <td>± ---</td> <td>± ---</td> </tr> </tbody> </table> ANGULAR ± 3 °		mm	INCH	4 PLACES	± ---	± ---	3 PLACES	± ---	± ---	2 PLACES	± 0.2	± ---	1 PLACE	± ---	± ---	MM ONLY DRAWN BY SKL IM01 DATE 2006/08/21 CHECKED BY CWLAM DATE 2006/09/04 APPROVED BY KWLEE DATE 2006/09/04	NTS	METRIC	TITLE
		mm	INCH																		
	4 PLACES	± ---	± ---																		
3 PLACES	± ---	± ---																			
2 PLACES	± 0.2	± ---																			
1 PLACE	± ---	± ---																			
DESCRIPTION	DRAFT WHERE APPLICABLE MUST REMAIN WITHIN DIMENSIONS	SEE TABLE			CUSTOM HEADER C-GRID, SINGLE WAFER HDR, THRU HOLE, VERTICAL, LF	MOLEX INCORPORATED															
REV			MATERIAL NO.	DOCUMENT NO.	SHEET NO.																

9 8 7 6 5 4 3 2 1

PART NO FOR TRAY PACKAGING	PART NO FOR BULK PACKAGING	CKT SIZE	PLATING TYPE	DIMENSION				
				A	B	F	MATING END	SOLDER TAIL
							M	P
87914-0401	-----	4	1	5.08	2.54	13.21	8.13	2.79
87914-0402	-----	4	2	5.08	2.54	13.21	8.13	2.79
87914-0403	-----	4	3	5.08	2.54	13.21	8.13	2.79
87914-0601	-----	6	1	7.62	5.08	13.21	8.13	2.79
87914-0602	-----	6	2	7.62	5.08	13.21	8.13	2.79
87914-0603	-----	6	3	7.62	5.08	13.21	8.13	2.79
87914-0801	-----	8	1	10.16	7.62	13.21	8.13	2.79
87914-0802	-----	8	2	10.16	7.62	13.21	8.13	2.79
87914-0803	-----	8	3	10.16	7.62	13.21	8.13	2.79
87914-1001	-----	10	1	12.70	10.16	13.21	8.13	2.79
87914-1002	-----	10	2	12.70	10.16	13.21	8.13	2.79
87914-1003	-----	10	3	12.70	10.16	13.21	8.13	2.79

PART NO FOR TRAY PACKAGING	PART NO FOR BULK PACKAGING	CKT SIZE	PLATING TYPE	DIMENSION				
				A	B	F	MATING END	SOLDER TAIL
							M	P
87914-0204	-----	2	1	2.54	---	11.11	6.10	2.72
87914-0205	-----	2	2	2.54	---	11.11	6.10	2.72
87914-0206	-----	2	3	2.54	---	11.11	6.10	2.72
87914-0404	-----	4	1	5.08	2.54	11.11	6.10	2.72
87914-0405	-----	4	2	5.08	2.54	11.11	6.10	2.72
87914-0406	-----	4	3	5.08	2.54	11.11	6.10	2.72
87914-0604	-----	6	1	7.62	5.08	11.11	6.10	2.72
87914-0605	-----	6	2	7.62	5.08	11.11	6.10	2.72
87914-0606	-----	6	3	7.62	5.08	11.11	6.10	2.72
87914-0804	-----	8	1	10.16	7.62	11.11	6.10	2.72
87914-0805	-----	8	2	10.16	7.62	11.11	6.10	2.72
87914-0806	-----	8	3	10.16	7.62	11.11	6.10	2.72
87914-1004	-----	10	1	12.70	10.16	11.11	6.10	2.72
87914-1005	-----	10	2	12.70	10.16	11.11	6.10	2.72
87914-1006	-----	10	3	12.70	10.16	11.11	6.10	2.72

EWR# 1010 & 1021
 EC NO: S2007-0182
 DRWNS:SKL IM01 2006/09/11
 CHKD:CWLAM 2006/09/12
 APPR:KWLEE 2006/09/13

QUALITY SYMBOLS
 ▼=0
 ▽=0

GENERAL TOLERANCES (UNLESS SPECIFIED)

	mm	INCH
4 PLACES	± ---	± ---
3 PLACES	± ---	± ---
2 PLACES	± 0.2	± ---
1 PLACE	± ---	± ---
ANGULAR ± 3 °		

 DRAFT WHERE APPLICABLE
 MUST REMAIN WITHIN DIMENSIONS

DIMENSION STYLE
 MM ONLY
 DRAWN BY SKL IM01 DATE 2006/08/21
 CHECKED BY CWLAM DATE 2006/09/04
 APPROVED BY KWLEE DATE 2006/09/04
 MATERIAL NO. SEE TABLE
 SIZE A3

SCALE NTS
 DESIGN UNITS METRIC
 THIRD ANGLE PROJECTION
 TITLE
 CUSTOM HEADER
 C-GRID, SINGLE WAFER HDR,
 THROU HOLE, VERTICAL, LF
 MOLEX INCORPORATED
 DOCUMENT NO. SD-87914-059
 SHEET NO. 2 OF 9
 THIS DRAWING CONTAINS INFORMATION THAT IS PROPRIETARY TO MOLEX INCORPORATED AND SHOULD NOT BE USED WITHOUT WRITTEN PERMISSION

10 9 8 7 6 5 4 3 2 1

F	PART NO FOR TRAY PACKAGING	PART NO FOR BULK PACKAGING	CKT SIZE	PLATING TYPE	DIMENSION				
					A	B	F	M	P
					MATING END	SOLDER TAIL			
87914-1201	-----	12	1	15.24	12.70	13.21	8.13	2.79	
87914-1202	-----	12	2	15.24	12.70	13.21	8.13	2.79	
87914-1203	-----	12	3	15.24	12.70	13.21	8.13	2.79	
87914-1401	-----	14	1	17.78	15.24	13.21	8.13	2.79	
87914-1402	-----	14	2	17.78	15.24	13.21	8.13	2.79	
87914-1403	-----	14	3	17.78	15.24	13.21	8.13	2.79	
87914-1601	-----	16	1	20.32	17.78	13.21	8.13	2.79	
87914-1602	-----	16	2	20.32	17.78	13.21	8.13	2.79	
87914-1603	-----	16	3	20.32	17.78	13.21	8.13	2.79	
87914-1801	-----	18	1	22.86	20.32	13.21	8.13	2.79	
87914-1802	-----	18	2	22.86	20.32	13.21	8.13	2.79	
87914-1803	-----	18	3	22.86	20.32	13.21	8.13	2.79	
87914-2001	-----	20	1	25.40	22.86	13.21	8.13	2.79	
87914-2002	-----	20	2	25.40	22.86	13.21	8.13	2.79	
87914-2003	-----	20	3	25.40	22.86	13.21	8.13	2.79	

F	PART NO FOR TRAY PACKAGING	PART NO FOR BULK PACKAGING	CKT SIZE	PLATING TYPE	DIMENSION				
					A	B	F	M	P
					MATING END	SOLDER TAIL			
87914-1204	-----	12	1	15.24	12.70	11.11	6.10	2.72	
87914-1205	-----	12	2	15.24	12.70	11.11	6.10	2.72	
87914-1206	-----	12	3	15.24	12.70	11.11	6.10	2.72	
87914-1404	-----	14	1	17.78	15.24	11.11	6.10	2.72	
87914-1405	-----	14	2	17.78	15.24	11.11	6.10	2.72	
87914-1406	-----	14	3	17.78	15.24	11.11	6.10	2.72	
87914-1604	-----	16	1	20.32	17.78	11.11	6.10	2.72	
87914-1605	-----	16	2	20.32	17.78	11.11	6.10	2.72	
87914-1606	-----	16	3	20.32	17.78	11.11	6.10	2.72	
87914-1804	-----	18	1	22.86	20.32	11.11	6.10	2.72	
87914-1805	-----	18	2	22.86	20.32	11.11	6.10	2.72	
87914-1806	-----	18	3	22.86	20.32	11.11	6.10	2.72	
87914-2004	-----	20	1	25.40	22.86	11.11	6.10	2.72	
87914-2005	-----	20	2	25.40	22.86	11.11	6.10	2.72	
87914-2006	-----	20	3	25.40	22.86	11.11	6.10	2.72	

B B

A	EWB# 1010 & 1021	DESCRIPTION	QUALITY SYMBOLS
	EC NO: S2007-0182		▽=0
	DRWNS:SKLIM01 2006/09/11		▽=0
	CHKD:CWLAM 2006/09/12		
	APPR:KWLEE 2006/09/13	REV	

GENERAL TOLERANCES (UNLESS SPECIFIED)	DIMENSION STYLE MM ONLY	SCALE NTS	DESIGN UNITS METRIC	THIRD ANGLE PROJECTION
4 PLACES ± ---	mm	DRAWN BY SKLIM01	DATE 2006/08/21	TITLE CUSTOM HEADER C-GRID,SINGLE WAFER HDR, THROU HOLE,VERTICAL, LF
3 PLACES ± ---	INCH	CHECKED BY CWLAM	DATE 2006/09/04	
2 PLACES ± 0.2		APPROVED BY KWLEE	DATE 2006/09/04	
1 PLACE ± ---		MATERIAL NO.	DOCUMENT NO.	
ANGULAR ± 3 °		SEE TABLE		SD-87914-059
DRAFT WHERE APPLICABLE MUST REMAIN WITHIN DIMENSIONS	SIZE A3	THIS DRAWING CONTAINS INFORMATION THAT IS PROPRIETARY TO MOLEX INCORPORATED AND SHOULD NOT BE USED WITHOUT WRITTEN PERMISSION		SHEET NO. 3 OF 9

9 8 7 6 5 4 3 2 1

PART NO FOR TRAY PACKAGING	PART NO FOR BULK PACKAGING	CKT SIZE	PLATING TYPE	DIMENSION				
				A	B	F	M	P
				MATING END	SOLDER TAIL			
87914-2201	-----	22	1	27.94	25.40	13.21	8.13	2.79
87914-2202	-----	22	2	27.94	25.40	13.21	8.13	2.79
87914-2203	-----	22	3	27.94	25.40	13.21	8.13	2.79
87914-2401	-----	24	1	30.48	27.94	13.21	8.13	2.79
87914-2402	-----	24	2	30.48	27.94	13.21	8.13	2.79
87914-2403	-----	24	3	30.48	27.94	13.21	8.13	2.79
87914-2601	-----	26	1	33.02	30.48	13.21	8.13	2.79
87914-2602	-----	26	2	33.02	30.48	13.21	8.13	2.79
87914-2603	-----	26	3	33.02	30.48	13.21	8.13	2.79
87914-2801	-----	28	1	35.56	33.02	13.21	8.13	2.79
87914-2802	-----	28	2	35.56	33.02	13.21	8.13	2.79
87914-2803	-----	28	3	35.56	33.02	13.21	8.13	2.79
87914-3001	-----	30	1	38.10	35.56	13.21	8.13	2.79
87914-3002	-----	30	2	38.10	35.56	13.21	8.13	2.79
87914-3003	-----	30	3	38.10	35.56	13.21	8.13	2.79

PART NO FOR TRAY PACKAGING	PART NO FOR BULK PACKAGING	CKT SIZE	PLATING TYPE	DIMENSION				
				A	B	F	M	P
				MATING END	SOLDER TAIL			
87914-2204	-----	22	1	27.94	25.40	11.11	6.10	2.72
87914-2205	-----	22	2	27.94	25.40	11.11	6.10	2.72
87914-2206	-----	22	3	27.94	25.40	11.11	6.10	2.72
87914-2404	-----	24	1	30.48	27.94	11.11	6.10	2.72
87914-2405	-----	24	2	30.48	27.94	11.11	6.10	2.72
87914-2406	-----	24	3	30.48	27.94	11.11	6.10	2.72
87914-2604	-----	26	1	33.02	30.48	11.11	6.10	2.72
87914-2605	-----	26	2	33.02	30.48	11.11	6.10	2.72
87914-2606	-----	26	3	33.02	30.48	11.11	6.10	2.72
87914-2804	-----	28	1	35.56	33.02	11.11	6.10	2.72
87914-2805	-----	28	2	35.56	33.02	11.11	6.10	2.72
87914-2806	-----	28	3	35.56	33.02	11.11	6.10	2.72
87914-3004	-----	30	1	38.10	35.56	11.11	6.10	2.72
87914-3005	-----	30	2	38.10	35.56	11.11	6.10	2.72
87914-3006	-----	30	3	38.10	35.56	11.11	6.10	2.72

B

EWR# 1010 & 1021 EC NO: S2007-0182 DRWNS:SKL IM01 2006/09/11 CHKD:CWLAM 2006/09/12 APPR:KWLEE 2006/09/13	QUALITY SYMBOLS = 0 = 0	GENERAL TOLERANCES (UNLESS SPECIFIED)		DIMENSION STYLE	SCALE	DESIGN UNITS	THIRD ANGLE PROJECTION		
				MM ONLY	NTS	METRIC			
				4 PLACES ± ---	± ---	DRAWN BY	DATE	CUSTOM HEADER C-GRID, SINGLE WAFER HDR, THROU HOLE, VERTICAL, LF MOLEX INCORPORATED	
				3 PLACES ± ---	± ---	SKL IM01	2006/08/21		
		2 PLACES ± 0.2	± ---	CHECKED BY	DATE				
		1 PLACE ± ---	± ---	CWLAM	2006/09/04				
		ANGULAR ± 3 °		APPROVED BY	DATE				
		DRAFT WHERE APPLICABLE MUST REMAIN WITHIN DIMENSIONS		KWLEE	2006/09/04				
				MATERIAL NO.	DOCUMENT NO.				
				SEE TABLE	SD-87914-059				
				SIZE			SHEET NO.		
				A3			4 OF 9		
				THIS DRAWING CONTAINS INFORMATION THAT IS PROPRIETARY TO MOLEX INCORPORATED AND SHOULD NOT BE USED WITHOUT WRITTEN PERMISSION					

	PART NO FOR TRAY PACKAGING	PART NO FOR BULK PACKAGING	CKT SIZE	PLATING TYPE	DIMENSION				
					A	B	F	MATING END	SOLDER TAIL
					A	B	F	M	P
F	87914-3201	-----	32	1	40.64	38.10	13.21	8.13	2.79
	87914-3202	-----	32	2	40.64	38.10	13.21	8.13	2.79
	87914-3203	-----	32	3	40.64	38.10	13.21	8.13	2.79
E	87914-3401	-----	34	1	43.18	40.64	13.21	8.13	2.79
	87914-3402	-----	34	2	43.18	40.64	13.21	8.13	2.79
	87914-3403	-----	34	3	43.18	40.64	13.21	8.13	2.79
	87914-3601	-----	36	1	45.72	43.18	13.21	8.13	2.79
	87914-3602	-----	36	2	45.72	43.18	13.21	8.13	2.79
	87914-3603	-----	36	3	45.72	43.18	13.21	8.13	2.79
D	87914-3801	-----	38	1	48.26	45.72	13.21	8.13	2.79
	87914-3802	-----	38	2	48.26	45.72	13.21	8.13	2.79
	87914-3803	-----	38	3	48.26	45.72	13.21	8.13	2.79
C	87914-4001	-----	40	1	50.80	48.26	13.21	8.13	2.79
	87914-4002	-----	40	2	50.80	48.26	13.21	8.13	2.79
	87914-4003	-----	40	3	50.80	48.26	13.21	8.13	2.79

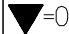
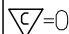
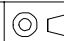

	PART NO FOR TRAY PACKAGING	PART NO FOR BULK PACKAGING	CKT SIZE	PLATING TYPE	DIMENSION				
					A	B	F	MATING END	SOLDER TAIL
					A	B	F	M	P
F	87914-3204	-----	32	1	40.64	38.10	11.11	6.10	2.72
	87914-3205	-----	32	2	40.64	38.10	11.11	6.10	2.72
	87914-3206	-----	32	3	40.64	38.10	11.11	6.10	2.72
E	87914-3404	-----	34	1	43.18	40.64	11.11	6.10	2.72
	87914-3405	-----	34	2	43.18	40.64	11.11	6.10	2.72
	87914-3406	-----	34	3	43.18	40.64	11.11	6.10	2.72
	87914-3604	-----	36	1	45.72	43.18	11.11	6.10	2.72
	87914-3605	-----	36	2	45.72	43.18	11.11	6.10	2.72
	87914-3606	-----	36	3	45.72	43.18	11.11	6.10	2.72
D	87914-3804	-----	38	1	48.26	45.72	11.11	6.10	2.72
	87914-3805	-----	38	2	48.26	45.72	11.11	6.10	2.72
	87914-3806	-----	38	3	48.26	45.72	11.11	6.10	2.72
C	87914-4004	-----	40	1	50.80	48.26	11.11	6.10	2.72
	87914-4005	-----	40	2	50.80	48.26	11.11	6.10	2.72
	87914-4006	-----	40	3	50.80	48.26	11.11	6.10	2.72

REV	DESCRIPTION
A	EWR# 1010 & 1021 EC NO: S2007-0182 DRWNS:SKL M01 2006/09/11 CHKD:CWLAM 2006/09/12 APPR:KWLEE 2006/09/13

QUALITY SYMBOLS	GENERAL TOLERANCES (UNLESS SPECIFIED)	DIMENSION STYLE	SCALE	DESIGN UNITS	THIRD ANGLE PROJECTION																		
▽=0 ▽=0	<table border="1"> <tr> <td></td> <th>mm</th> <th>INCH</th> </tr> <tr> <td>4 PLACES</td> <td>± ---</td> <td>± ---</td> </tr> <tr> <td>3 PLACES</td> <td>± ---</td> <td>± ---</td> </tr> <tr> <td>2 PLACES</td> <td>± 0.2</td> <td>± ---</td> </tr> <tr> <td>1 PLACE</td> <td>± ---</td> <td>± ---</td> </tr> <tr> <td colspan="3" style="text-align: center;">ANGULAR ± 3 °</td> </tr> </table>		mm	INCH	4 PLACES	± ---	± ---	3 PLACES	± ---	± ---	2 PLACES	± 0.2	± ---	1 PLACE	± ---	± ---	ANGULAR ± 3 °			MM ONLY	NTS	METRIC	
	mm	INCH																					
4 PLACES	± ---	± ---																					
3 PLACES	± ---	± ---																					
2 PLACES	± 0.2	± ---																					
1 PLACE	± ---	± ---																					
ANGULAR ± 3 °																							
	<table border="1"> <tr> <th>DRAWN BY</th> <th>DATE</th> </tr> <tr> <td>SKL M01</td> <td>2006/08/21</td> </tr> <tr> <th>CHECKED BY</th> <th>DATE</th> </tr> <tr> <td>CWLAM</td> <td>2006/09/04</td> </tr> <tr> <th>APPROVED BY</th> <th>DATE</th> </tr> <tr> <td>KWLEE</td> <td>2006/09/04</td> </tr> </table>	DRAWN BY	DATE	SKL M01	2006/08/21	CHECKED BY	DATE	CWLAM	2006/09/04	APPROVED BY	DATE	KWLEE	2006/09/04	CUSTOM HEADER C-GRID, SINGLE WAFER HDR, THROUGH HOLE, VERTICAL, LF									
DRAWN BY	DATE																						
SKL M01	2006/08/21																						
CHECKED BY	DATE																						
CWLAM	2006/09/04																						
APPROVED BY	DATE																						
KWLEE	2006/09/04																						
	<table border="1"> <tr> <th>MATERIAL NO.</th> <th>DOCUMENT NO.</th> <th>SHEET NO.</th> </tr> <tr> <td>SEE TABLE</td> <td>SD-87914-059</td> <td>5 OF 9</td> </tr> </table>	MATERIAL NO.	DOCUMENT NO.	SHEET NO.	SEE TABLE	SD-87914-059	5 OF 9	MOLEX INCORPORATED															
MATERIAL NO.	DOCUMENT NO.	SHEET NO.																					
SEE TABLE	SD-87914-059	5 OF 9																					
	DRAFT WHERE APPLICABLE MUST REMAIN WITHIN DIMENSIONS																						
	THIS DRAWING CONTAINS INFORMATION THAT IS PROPRIETARY TO MOLEX INCORPORATED AND SHOULD NOT BE USED WITHOUT WRITTEN PERMISSION																						

	10		9		8		7		6		5		4		3		2		1	
	PART NO FOR TRAY PACKAGING	PART NO FOR BULK PACKAGING	CKT SIZE	PLATING TYPE	DIMENSION					PART NO FOR TRAY PACKAGING	PART NO FOR BULK PACKAGING	CKT SIZE	PLATING TYPE	DIMENSION						
					A	B	F	M	P					A	B	F	M	P		
F	87914-4201	-----	42	1	53.34	50.80	13.21	8.13	2.79	87914-4204	-----	42	1	53.34	50.80	11.11	6.10	2.72		
	87914-4202	-----	42	2	53.34	50.80	13.21	8.13	2.79	87914-4205	-----	42	2	53.34	50.80	11.11	6.10	2.72		
	87914-4203	-----	42	3	53.34	50.80	13.21	8.13	2.79	87914-4206	-----	42	3	53.34	50.80	11.11	6.10	2.72		
	87914-4401	-----	44	1	55.88	53.34	13.21	8.13	2.79	87914-4404	-----	44	1	55.88	53.34	11.11	6.10	2.72		
	87914-4402	-----	44	2	55.88	53.34	13.21	8.13	2.79	87914-4405	-----	44	2	55.88	53.34	11.11	6.10	2.72		
E	87914-4403	-----	44	3	55.88	53.34	13.21	8.13	2.79	87914-4406	-----	44	3	55.88	53.34	11.11	6.10	2.72		
	87914-4601	-----	46	1	58.42	55.88	13.21	8.13	2.79	87914-4604	-----	46	1	58.42	55.88	11.11	6.10	2.72		
	87914-4602	-----	46	2	58.42	55.88	13.21	8.13	2.79	87914-4605	-----	46	2	58.42	55.88	11.11	6.10	2.72		
	87914-4603	-----	46	3	58.42	55.88	13.21	8.13	2.79	87914-4606	-----	46	3	58.42	55.88	11.11	6.10	2.72		
D	87914-4801	-----	48	1	60.96	58.42	13.21	8.13	2.79	87914-4804	-----	48	1	60.96	58.42	11.11	6.10	2.72		
	87914-4802	-----	48	2	60.96	58.42	13.21	8.13	2.79	87914-4805	-----	48	2	60.96	58.42	11.11	6.10	2.72		
	87914-4803	-----	48	3	60.96	58.42	13.21	8.13	2.79	87914-4806	-----	48	3	60.96	58.42	11.11	6.10	2.72		
	87914-5001	-----	50	1	63.50	60.96	13.21	8.13	2.79	87914-5004	-----	50	1	63.50	60.96	11.11	6.10	2.72		
	87914-5002	-----	50	2	63.50	60.96	13.21	8.13	2.79	87914-5005	-----	50	2	63.50	60.96	11.11	6.10	2.72		
C	87914-5003	-----	50	3	63.50	60.96	13.21	8.13	2.79	87914-5006	-----	50	3	63.50	60.96	11.11	6.10	2.72		

B

EWR# 1010 & 1021 EC NO: S2007-0182 DRWNS:SKL IM01 2006/09/11 CHKD:CWLAM 2006/09/12 APPR:KWLEE 2006/09/13	QUALITY SYMBOLS  = 0  = 0.2	GENERAL TOLERANCES (UNLESS SPECIFIED)	DIMENSION STYLE MM ONLY	SCALE NTS	DESIGN UNITS METRIC	 THIRD ANGLE PROJECTION		
		4 PLACES ± --- ± --- 3 PLACES ± --- ± --- 2 PLACES ± 0.2 ± --- 1 PLACE ± --- ± ---	DIMENSION STYLE mm INCH	DRAWN BY SKL IM01	DATE 2006/08/21	TITLE CUSTOM HEADER C-GRID, SINGLE WAFER HDR, THROU HOLE, VERTICAL, LF		
		ANGULAR ± 3 °	APPROVED BY KWLEE	DATE 2006/09/04	 MOLEX INCORPORATED			
		DRAFT WHERE APPLICABLE MUST REMAIN WITHIN DIMENSIONS	MATERIAL NO. SEE TABLE	DOCUMENT NO. SD-87914-059	SHEET NO. 6 OF 9			

F	10	9	8	7	DIMENSION					6	5	4	3	2	1	F				
					PART NO FOR TRAY PACKAGING	PART NO FOR BULK PACKAGING	CKT SIZE	PLATING TYPE	DIMENSION											
									A								B	F	M	P
-----	87914-5201	52	1	66.04	63.50	13.21	8.13	2.79	-----	87914-5204	52	1	66.04	63.50	11.11	6.10	2.72			
-----	87914-5202	52	2	66.04	63.50	13.21	8.13	2.79	-----	87914-5205	52	2	66.04	63.50	11.11	6.10	2.72			
-----	87914-5203	52	3	66.04	63.50	13.21	8.13	2.79	-----	87914-5206	52	3	66.04	63.50	11.11	6.10	2.72			
-----	87914-5401	54	1	68.58	66.04	13.21	8.13	2.79	-----	87914-5404	54	1	68.58	66.04	11.11	6.10	2.72			
-----	87914-5402	54	2	68.58	66.04	13.21	8.13	2.79	-----	87914-5405	54	2	68.58	66.04	11.11	6.10	2.72			
-----	87914-5403	54	3	68.58	66.04	13.21	8.13	2.79	-----	87914-5406	54	3	68.58	66.04	11.11	6.10	2.72			
-----	87914-5601	56	1	71.12	68.58	13.21	8.13	2.79	-----	87914-5604	56	1	71.12	68.58	11.11	6.10	2.72			
-----	87914-5602	56	2	71.12	68.58	13.21	8.13	2.79	-----	87914-5605	56	2	71.12	68.58	11.11	6.10	2.72			
-----	87914-5603	56	3	71.12	68.58	13.21	8.13	2.79	-----	87914-5606	56	3	71.12	68.58	11.11	6.10	2.72			
-----	87914-5801	58	1	73.66	71.12	13.21	8.13	2.79	-----	87914-5804	58	1	73.66	71.12	11.11	6.10	2.72			
-----	87914-5802	58	2	73.66	71.12	13.21	8.13	2.79	-----	87914-5805	58	2	73.66	71.12	11.11	6.10	2.72			
-----	87914-5803	58	3	73.66	71.12	13.21	8.13	2.79	-----	87914-5806	58	3	73.66	71.12	11.11	6.10	2.72			
-----	87914-6001	60	1	76.20	73.66	13.21	8.13	2.79	-----	87914-6004	60	1	76.20	73.66	11.11	6.10	2.72			
-----	87914-6002	60	2	76.20	73.66	13.21	8.13	2.79	-----	87914-6005	60	2	76.20	73.66	11.11	6.10	2.72			
-----	87914-6003	60	3	76.20	73.66	13.21	8.13	2.79	-----	87914-6006	60	3	76.20	73.66	11.11	6.10	2.72			

B																B
---	--	--	--	--	--	--	--	--	--	--	--	--	--	--	--	---

A	EWR# 1010 & 1021 EC NO: S2007-0182 DRWNS:SKL IM01 2006/09/11 CHKD:CWLAM 2006/09/12 APPR:KWLEE 2006/09/13	QUALITY SYMBOLS	GENERAL TOLERANCES (UNLESS SPECIFIED)	DIMENSION STYLE	SCALE	DESIGN UNITS	THIRD ANGLE PROJECTION	
		▽=0	mm INCH	MM ONLY	NTS	METRIC		
		▽=0	4 PLACES ± --- ± ---	DRAWN BY DATE	TITLE			
			3 PLACES ± --- ± ---	SKL IM01 2006/08/21	CUSTOM HEADER			
			2 PLACES ± 0.2 ± ---	CHECKED BY DATE	C-GRID, SINGLE WAFER HDR, THROU HOLE, VERTICAL, LF			
	1 PLACE ± --- ± ---	CWLAM 2006/09/04	MOLEX INCORPORATED					
	ANGULAR ± 3 °	APPROVED BY DATE	MATERIAL NO. DOCUMENT NO. SHEET NO.					
		KWLEE 2006/09/04	SEE TABLE SD-87914-059 7 OF 9					
			DRAFT WHERE APPLICABLE MUST REMAIN WITHIN DIMENSIONS					
			SIZE THIS DRAWING CONTAINS INFORMATION THAT IS PROPRIETARY TO MOLEX INCORPORATED AND SHOULD NOT BE USED WITHOUT WRITTEN PERMISSION					

F	10		9		8		7		6		5		4		3		2		1	
	PART NO FOR TRAY PACKAGING	PART NO FOR BULK PACKAGING	CKT SIZE	PLATING TYPE	DIMENSION					PART NO FOR TRAY PACKAGING	PART NO FOR BULK PACKAGING	CKT SIZE	PLATING TYPE	DIMENSION						
					A	B	F	M	P					A	B	F	M	P		
	-----	87914-6201	62	1	78.74	76.20	13.21	8.13	2.79	-----	87914-6204	62	1	78.74	76.20	11.11	6.10	2.72		
	-----	87914-6202	62	2	78.74	76.20	13.21	8.13	2.79	-----	87914-6205	62	2	78.74	76.20	11.11	6.10	2.72		
	-----	87914-6203	62	3	78.74	76.20	13.21	8.13	2.79	-----	87914-6206	62	3	78.74	76.20	11.11	6.10	2.72		
	-----	87914-6401	64	1	81.28	78.74	13.21	8.13	2.79	-----	87914-6404	64	1	81.28	78.74	11.11	6.10	2.72		
	-----	87914-6402	64	2	81.28	78.74	13.21	8.13	2.79	-----	87914-6405	64	2	81.28	78.74	11.11	6.10	2.72		
	-----	87914-6403	64	3	81.28	78.74	13.21	8.13	2.79	-----	87914-6406	64	3	81.28	78.74	11.11	6.10	2.72		
	-----	87914-6601	66	1	83.82	81.28	13.21	8.13	2.79	-----	87914-6604	66	1	83.82	81.28	11.11	6.10	2.72		
	-----	87914-6602	66	2	83.82	81.28	13.21	8.13	2.79	-----	87914-6605	66	2	83.82	81.28	11.11	6.10	2.72		
	-----	87914-6603	66	3	83.82	81.28	13.21	8.13	2.79	-----	87914-6606	66	3	83.82	81.28	11.11	6.10	2.72		
	-----	87914-6801	68	1	86.36	83.82	13.21	8.13	2.79	-----	87914-6804	68	1	86.36	83.82	11.11	6.10	2.72		
	-----	87914-6802	68	2	86.36	83.82	13.21	8.13	2.79	-----	87914-6805	68	2	86.36	83.82	11.11	6.10	2.72		
	-----	87914-6803	68	3	86.36	83.82	13.21	8.13	2.79	-----	87914-6806	68	3	86.36	83.82	11.11	6.10	2.72		
	-----	87914-7001	70	1	88.90	86.36	13.21	8.13	2.79	-----	87914-7004	70	1	88.90	86.36	11.11	6.10	2.72		
	-----	87914-7002	70	2	88.90	86.36	13.21	8.13	2.79	-----	87914-7005	70	2	88.90	86.36	11.11	6.10	2.72		
	-----	87914-7003	70	3	88.90	86.36	13.21	8.13	2.79	-----	87914-7006	70	3	88.90	86.36	11.11	6.10	2.72		

--	--	--	--	--	--	--	--	--	--	--	--	--	--	--	--	--	--	--	--

EWR# 1010 & 1021 EC NO: S2007-0182 DRWNS:SKL IM01 2006/09/11 CHKD:CWLAM 2006/09/12 APPR:KWLEE 2006/09/13	QUALITY SYMBOLS =0 =0	GENERAL TOLERANCES (UNLESS SPECIFIED)	DIMENSION STYLE MM ONLY	SCALE NTS	DESIGN UNITS METRIC	THIRD ANGLE PROJECTION		
		4 PLACES ± --- ± --- 3 PLACES ± --- ± --- 2 PLACES ± 0.2 ± --- 1 PLACE ± --- ± ---	mm INCH	DRAWN BY DATE SKL IM01 2006/08/21	TITLE CUSTOM HEADER C-GRID, SINGLE WAFER HDR, THROU HOLE, VERTICAL, LF			
		ANGULAR ± 3 °	DRAFT WHERE APPLICABLE MUST REMAIN WITHIN DIMENSIONS	CHECKED BY DATE CWLAM 2006/09/04	MOLEX INCORPORATED			
		APPROVED BY DATE KWLEE 2006/09/04	MATERIAL NO.	DOCUMENT NO. SD-87914-059	SHEET NO. 8 OF 9			

F	10		9		8		7		6		5		4		3		2		1		F							
	PART NO FOR TRAY PACKAGING	PART NO FOR BULK PACKAGING	CKT SIZE	PLATING TYPE	DIMENSION					PART NO FOR TRAY PACKAGING	PART NO FOR BULK PACKAGING	CKT SIZE	PLATING TYPE	DIMENSION					PART NO FOR TRAY PACKAGING	PART NO FOR BULK PACKAGING		CKT SIZE	PLATING TYPE	DIMENSION				
					A	B	F	M	P					A	B	F	M	P						A	B	F	M	P
-----	87914-7201	72	1	91.44	88.90	13.21	8.13	2.79	-----	87914-7204	72	1	91.44	88.90	11.11	6.10	2.72	-----	87914-7205	72	2	91.44	88.90	11.11	6.10	2.72		
-----	87914-7202	72	2	91.44	88.90	13.21	8.13	2.79	-----	87914-7206	72	3	91.44	88.90	11.11	6.10	2.72	-----	87914-7207	72	3	91.44	88.90	11.11	6.10	2.72		
-----	87914-7203	72	3	91.44	88.90	13.21	8.13	2.79	-----	87914-7401	74	1	93.98	91.44	11.11	6.10	2.72	-----	87914-7402	74	2	93.98	91.44	11.11	6.10	2.72		
-----	87914-7401	74	1	93.98	91.44	13.21	8.13	2.79	-----	87914-7403	74	3	93.98	91.44	11.11	6.10	2.72	-----	87914-7404	74	1	93.98	91.44	11.11	6.10	2.72		
-----	87914-7402	74	2	93.98	91.44	13.21	8.13	2.79	-----	87914-7405	74	2	93.98	91.44	11.11	6.10	2.72	-----	87914-7406	74	3	93.98	91.44	11.11	6.10	2.72		
-----	87914-7403	74	3	93.98	91.44	13.21	8.13	2.79	-----	87914-7601	76	1	96.52	93.98	11.11	6.10	2.72	-----	87914-7602	76	2	96.52	93.98	11.11	6.10	2.72		
-----	87914-7601	76	1	96.52	93.98	13.21	8.13	2.79	-----	87914-7603	76	3	96.52	93.98	11.11	6.10	2.72	-----	87914-7604	76	1	96.52	93.98	11.11	6.10	2.72		
-----	87914-7602	76	2	96.52	93.98	13.21	8.13	2.79	-----	87914-7605	76	2	96.52	93.98	11.11	6.10	2.72	-----	87914-7606	76	3	96.52	93.98	11.11	6.10	2.72		
-----	87914-7603	76	3	96.52	93.98	13.21	8.13	2.79	-----	87914-7801	78	1	99.06	96.52	11.11	6.10	2.72	-----	87914-7802	78	2	99.06	96.52	11.11	6.10	2.72		
-----	87914-7801	78	1	99.06	96.52	13.21	8.13	2.79	-----	87914-7803	78	3	99.06	96.52	11.11	6.10	2.72	-----	87914-7804	78	1	99.06	96.52	11.11	6.10	2.72		
-----	87914-7802	78	2	99.06	96.52	13.21	8.13	2.79	-----	87914-7805	78	2	99.06	96.52	11.11	6.10	2.72	-----	87914-7806	78	3	99.06	96.52	11.11	6.10	2.72		
-----	87914-7803	78	3	99.06	96.52	13.21	8.13	2.79	-----	87914-8001	80	1	101.60	99.06	11.11	6.10	2.72	-----	87914-8002	80	2	101.60	99.06	11.11	6.10	2.72		
-----	87914-8001	80	1	101.60	99.06	13.21	8.13	2.79	-----	87914-8003	80	3	101.60	99.06	11.11	6.10	2.72	-----	87914-8004	80	1	101.60	99.06	11.11	6.10	2.72		
-----	87914-8002	80	2	101.60	99.06	13.21	8.13	2.79	-----	87914-8005	80	2	101.60	99.06	11.11	6.10	2.72	-----	87914-8006	80	3	101.60	99.06	11.11	6.10	2.72		
-----	87914-8003	80	3	101.60	99.06	13.21	8.13	2.79	-----									-----										

B

A	EWR# 1010 & 1021 EC NO: S2007-0182 DRWNS:SKL IM01 2006/09/11 CHKD:CWLAM 2006/09/12 APPR:KWLEE 2006/09/13	QUALITY SYMBOLS =0 =0	GENERAL TOLERANCES (UNLESS SPECIFIED) <table border="1"> <tr> <th></th> <th>mm</th> <th>INCH</th> </tr> <tr> <td>4 PLACES</td> <td>± ---</td> <td>± ---</td> </tr> <tr> <td>3 PLACES</td> <td>± ---</td> <td>± ---</td> </tr> <tr> <td>2 PLACES</td> <td>± 0.2</td> <td>± ---</td> </tr> <tr> <td>1 PLACE</td> <td>± ---</td> <td>± ---</td> </tr> <tr> <td colspan="3">ANGULAR ± 3 °</td> </tr> </table>		mm	INCH	4 PLACES	± ---	± ---	3 PLACES	± ---	± ---	2 PLACES	± 0.2	± ---	1 PLACE	± ---	± ---	ANGULAR ± 3 °			DIMENSION STYLE MM ONLY	SCALE NTS	DESIGN UNITS METRIC	THIRD ANGLE PROJECTION 	DRAWN BY SKL IM01	DATE 2006/08/21	CHECKED BY CWLAM	DATE 2006/09/04	APPROVED BY KWLEE	DATE 2006/09/04	MATERIAL NO. SEE TABLE	DOCUMENT NO. SD-87914-059	SHEET NO. 9 OF 9
			mm	INCH																														
		4 PLACES	± ---	± ---																														
		3 PLACES	± ---	± ---																														
2 PLACES	± 0.2	± ---																																
1 PLACE	± ---	± ---																																
ANGULAR ± 3 °																																		
DRAFT WHERE APPLICABLE MUST REMAIN WITHIN DIMENSIONS	CUSTOM HEADER C-GRID, SINGLE WAFER HDR, THROU HOLE, VERTICAL, LF		MOLEX INCORPORATED																															
THIS DRAWING CONTAINS INFORMATION THAT IS PROPRIETARY TO MOLEX INCORPORATED AND SHOULD NOT BE USED WITHOUT WRITTEN PERMISSION																																		
SIZE A3																																		