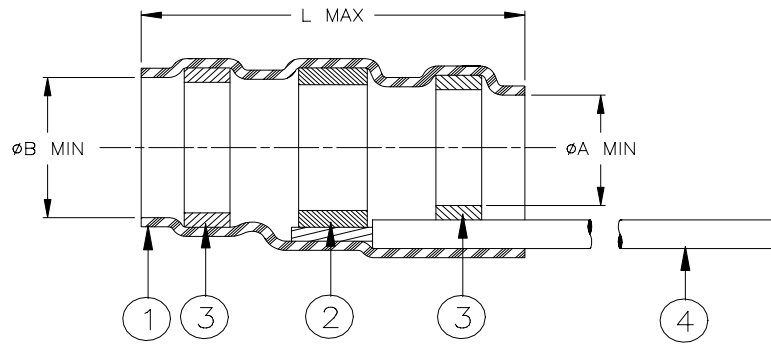


SPECIFICATION CONTROL DRAWING



Product Revision		Product Dimensions			Cable Dimensions				
Product Name		øA min	øB min	L max	øD max	øE min	øF min	øG max	J
CWT-3-W122-9	A	2.50 (0.098)	3.00 (0.118)	24.50 (0.965)	3.00 (0.118)	1.50 (0.059)	1.00 (0.040)	2.50 (0.098)	7.00±0.50 (0.276±0.020)
CWT-5-W122-9	A	4.30 (0.169)	4.80 (0.189)	29.30 (1.154)	4.80 (0.189)	2.00 (0.079)	1.50 (0.059)	4.30 (0.169)	9.00±0.50 (0.354±0.020)
CWT-6-W122-9	A	6.00 (0.236)	6.70 (0.264)	32.00 (1.260)	6.70 (0.264)	3.30 (0.130)	2.80 (0.110)	6.00 (0.236)	10.00±0.50 (0.394±0.020)
CWT-7-W122-9	A	6.40 (0.252)	7.30 (0.287)	32.50 (1.280)	7.30 (0.287)	3.30 (0.130)	2.80 (0.110)	6.40 (0.252)	11.00±1.00 (0.433±0.040)
CWT-9-W122-9	A	8.70 (0.343)	9.20 (0.362)	35.50 (1.398)	9.20 (0.362)	4.50 (0.177)	4.00 (0.157)	8.70 (0.343)	12.00±1.00 (0.472±0.040)
CWT-11-W122-9	A	10.00 (0.394)	11.50 (0.453)	35.50 (1.398)	11.50 (0.453)	4.50 (0.177)	4.00 (0.157)	10.00 (0.394)	13.00±1.00 (0.512±0.040)
CWT-13-W122-9	A	13.00 (0.512)	15.00 (0.591)	45.50 (1.791)	15.10 (0.594)	7.00 (0.276)	6.50 (0.256)	13.00 (0.512)	17.00±1.00 (0.669±0.040)

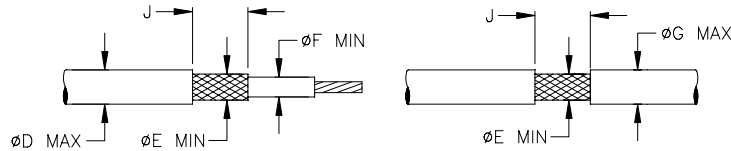
MATERIALS

1. INSULATION SLEEVE: Transparent heat-shrinkable radiation cross-linked modified polyolefin.
2. SOLDER PREFORM WITH FLUX:
 - SOLDER: TYPE Cd18 per ANSI/J-STD-006.
 - FLUX: TYPE ROM1 per ANSI/J-STD-004.
3. MELTABLE SEALING RING: Thermally stabilized thermoplastic.
4. GROUND LEAD: Raychem cross-linked polyethylene wire, AWG22, stranded tin-plated copper. Color: white.

APPLICATION

1. These controlled soldering devices are designed for termination of a bare or tin-plated copper shield on a cable having an insulation rated for at least +85°C, meeting the dimensional criteria listed in the table above.
2. Temperature range: -55°C to +125°C.
3. When installed properly, these devices will meet the requirements of Tyco Electronics/Raychem Specification RT-1404.
4. For installation procedure and application equipment, consult Tyco Electronics/Raychem RPIP 824-00.

For best results, prepare the cable as shown:



tyco Electronics		Tyco Electronics Corporation 305 Constitutional Drive Menlo Park, CA 94025 USA		RAYCHEM		TITLE: SOLDERSLEEVE TERMINATOR WITH PRE-INSTALLED LEAD			
Unless otherwise specified dimensions are in millimeters. [Inches dimensions are shown in brackets]						DOCUMENT NO.: CWT-XX-W122-9			
TOLERANCES: 0.00 N/A 0.0 N/A 0 N/A		ANGLES: N/A ROUGHNESS IN MICRON		Tyco Electronics reserves the right to amend this drawing at any time. Users should evaluate the suitability of the product for their application.		DOC. ISSUE: 1		DATE: 8-May-03	
DRAWN BY: M. FORONDA		CAGE CODE: 06090		REPLACES: D020487		DCR NUMBER: D030071		PROD. REV.: SEE TABLE	
						SCALE: None		SIZE: A	
								SHEET: 1 of 1	

If this document is printed it becomes uncontrolled. Check for the latest revision.