

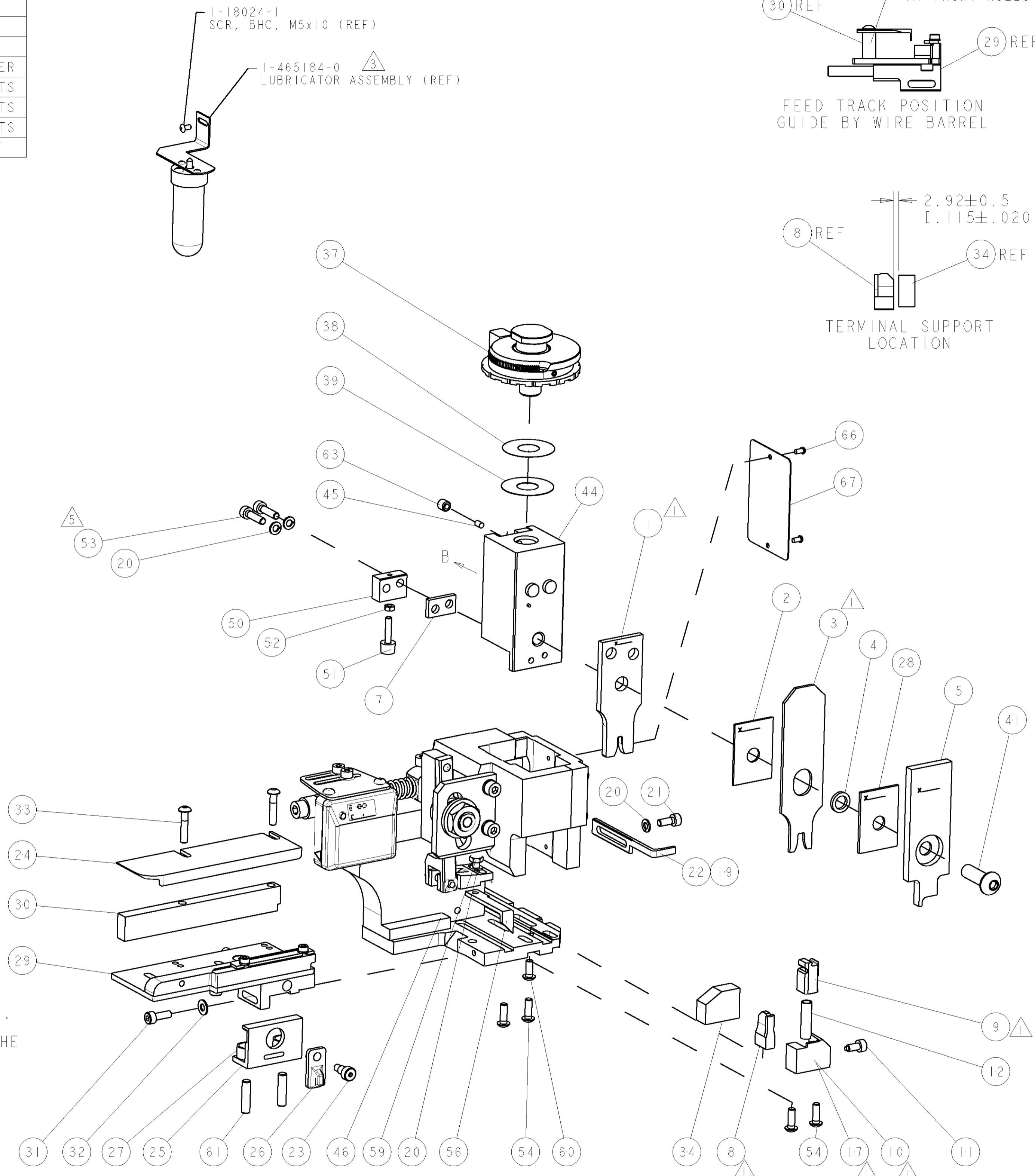
PART NUMBER	REV	TERMINATOR	FEED TYPE	DESCRIPTION
1528746-1	A	LEADMAKER	MECH POST FEED	CUTS CARRIER
1528746-2	A	BENCH	MECH PRE FEED	CUTS CARRIER
1528746-6	A	LEADMAKER	MECH POST FEED	CONTINUOUS CARRIER
7-1528746-1	A	LEADMAKER	MECH POST FEED	-1 AND SPARE PARTS
7-1528746-2	A	BENCH	MECH PRE FEED	-2 AND SPARE PARTS
7-1528746-6	A	LEADMAKER	MECH POST FEED	-6 AND SPARE PARTS
7-1528746-7	A	-	-	SPARE PARTS KIT

WIRE	SIZE	TYPE	RANGE
WIRE	2.79 [1.110 IN]	F	0.50-2.00mm ² or 20-14 AWG
INSUL	4.57 [1.180 IN]	F	2.10-3.40 [1.083-1.134 IN]

WIRE STRIP LENGTH	APPL INSTRUCTIONS
5.00-6.00 [1.197-1.236 IN]	408-8322 & 408-8490

TERMINAL APPL SPEC	FEED
114-5032	20.00 [1.787 IN]

WIRE SIZE	CRIMP HEIGHT	REF SETTING
2.00mm ² or 14 AWG	1.85 ± 0.05 [1.073 ± .002 IN]	B1
1.25mm ² or 16 AWG	1.61 ± 0.05 [1.063 ± .002 IN]	D3
0.75/0.85mm ² or 18 AWG	1.49 ± 0.05 [1.059 ± .002 IN]	D9
0.50mm ² or 20 AWG	1.39 ± 0.05 [1.055 ± .002 IN]	E6

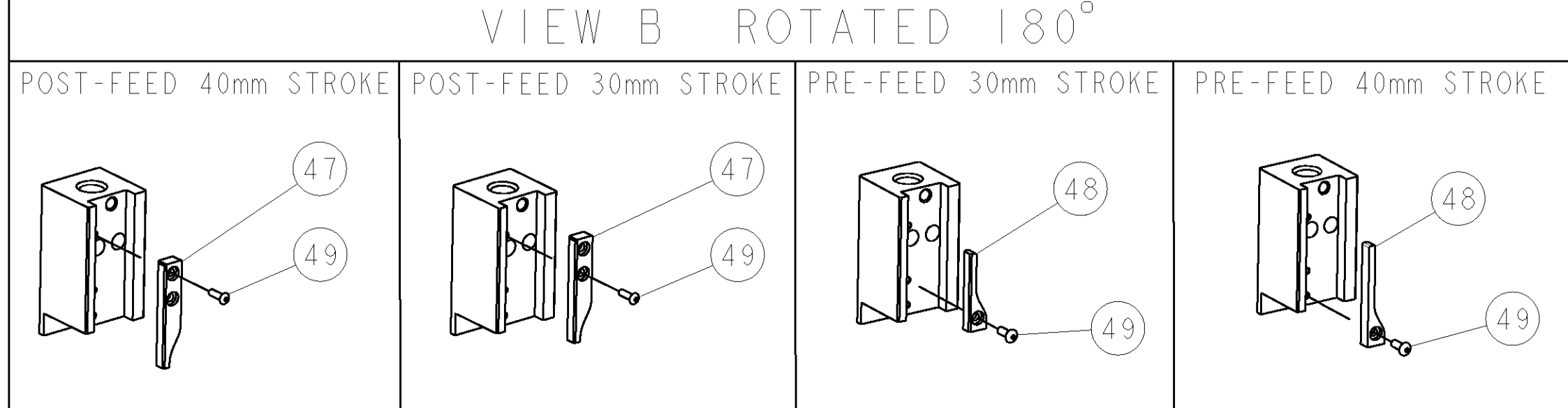


LOC	DIST	REV	DESCRIPTION	DATE	BY	APPD
A	66		SEE ECO-07-001917	24JAN2007	DP	MC

QTY	UNIT	DESCRIPTION	ITEM NO
-	-	-	73
-	-	-	72
-	-	-	71
-	-	-	70
-	-	-	69
-	-	-	68
-	-	-	67
-	-	-	66
-	-	-	65
-	-	-	64
-	-	-	63
-	-	-	62
-	-	-	61
-	-	-	60
-	-	-	59
-	-	-	58
-	-	-	57
-	-	-	56
-	-	-	55
-	-	-	54
-	-	-	53
-	-	-	52
-	-	-	51
-	-	-	50
-	-	-	49
-	-	-	48
-	-	-	47
-	-	-	46
-	-	-	45
-	-	-	44
-	-	-	43
-	-	-	42
-	-	-	41
-	-	-	40
-	-	-	39
-	-	-	38
-	-	-	37
-	-	-	36
-	-	-	35
-	-	-	34
-	-	-	33
-	-	-	32
-	-	-	31
-	-	-	30
-	-	-	29
-	-	-	28
-	-	-	27
-	-	-	26
-	-	-	25
-	-	-	24
-	-	-	23
-	-	-	22
-	-	-	21
-	-	-	20
-	-	-	19
-	-	-	18
-	-	-	17
-	-	-	16
-	-	-	15
-	-	-	14
-	-	-	13
-	-	-	12
-	-	-	11
-	-	-	10
-	-	-	9
-	-	-	8
-	-	-	7
-	-	-	6
-	-	-	5
-	-	-	4
-	-	-	3
-	-	-	2
-	-	-	1

- △ RECOMMENDED SPARE PARTS.
- 2. GREASE RAM, CAM, CAM FOLLOWER AND FEED ROD LIGHTLY.
- △ CERTAIN TERMINALS REQUIRE LUBRICATION. REFER TO THE APPLICATOR INSTRUCTION SHEET FOR MORE INFORMATION.
- 4. LUBRICATE DAILY PER THE APPLICATOR INSTRUCTION SHEET SUPPLIED WITH THE APPLICATOR.
- △ ITEM 53, CUT TO LENGTH AT ASSEMBLY.

* WARNING
ON INSTALLATION, SET WIRE DISC TO LARGEST WIRE SIZE SETTING. USE OF SETTINGS BELOW MIN. REQUIRED CRIMP HEIGHT SETTING WILL CAUSE DAMAGE TO CRIMP TOOLING.



QTY	UNIT	DESCRIPTION	ITEM NO
-	-	-	84
-	-	-	83
-	-	-	82
-	-	-	81
-	-	-	80
-	-	-	79
-	-	-	78
-	-	-	77
-	-	-	76
-	-	-	75
-	-	-	74
-	-	-	73
-	-	-	72
-	-	-	71
-	-	-	70
-	-	-	69
-	-	-	68
-	-	-	67
-	-	-	66
-	-	-	65
-	-	-	64
-	-	-	63
-	-	-	62
-	-	-	61
-	-	-	60
-	-	-	59
-	-	-	58
-	-	-	57
-	-	-	56
-	-	-	55
-	-	-	54
-	-	-	53
-	-	-	52
-	-	-	51
-	-	-	50
-	-	-	49
-	-	-	48
-	-	-	47
-	-	-	46
-	-	-	45
-	-	-	44
-	-	-	43
-	-	-	42
-	-	-	41
-	-	-	40
-	-	-	39
-	-	-	38
-	-	-	37
-	-	-	36
-	-	-	35
-	-	-	34
-	-	-	33
-	-	-	32
-	-	-	31
-	-	-	30
-	-	-	29
-	-	-	28
-	-	-	27
-	-	-	26
-	-	-	25
-	-	-	24
-	-	-	23
-	-	-	22
-	-	-	21
-	-	-	20
-	-	-	19
-	-	-	18
-	-	-	17
-	-	-	16
-	-	-	15
-	-	-	14
-	-	-	13
-	-	-	12
-	-	-	11
-	-	-	10
-	-	-	9
-	-	-	8
-	-	-	7
-	-	-	6
-	-	-	5
-	-	-	4
-	-	-	3
-	-	-	2
-	-	-	1

DIMENSIONS: mm [IN]		TOLERANCES UNLESS OTHERWISE SPECIFIED:	
0 PLC	±	0.15	±
1 PLC	±	0.25	±
2 PLC	±	0.38	±
3 PLC	±	0.51	±
4 PLC	±	0.64	±
ANGLES	±		

MATERIAL	FINISH	WEIGHT	CUSTOMER DRAWING
-	-	-	-