

DESCRIPTION: FEMALE SOLDER CUP/STAMPED

SPECIFICATIONS:

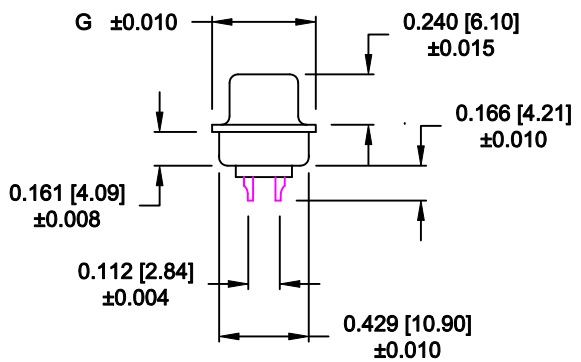
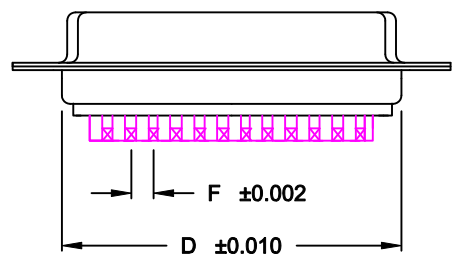
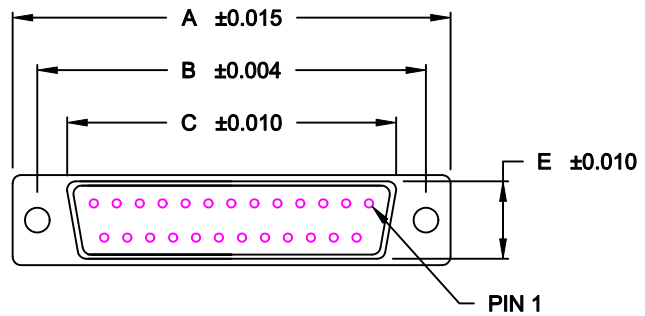
MATERIALS:

SHELL: STEEL, TIN (80u" TIN OVER 40u" COPPER)
 OR NICKEL (80u" NICKEL OVER 40u" COPPER)
 INSULATOR: UL 94V-0 RATED BLACK PBT
 +30% FIBER-GLASS

ELECTRICALS:

CURRENT RATING: 5 AMPS
 CONTACT RESISTANCE: 15 mOHMS MAX
 INSULATOR RESISTANCE: 1000 MOHMS MIN
 VOLTAGE: 500V AC FOR 1 MINUTE
 TEMPERATURE: -50°C TO +100°C

| POS. | A | B | C | D | E | F | G |
|------|-------|-------|-------|-------|-------|-------|-------|
| 09 | 1.213 | 0.984 | 0.642 | 0.756 | 0.311 | 0.109 | 0.496 |
| | 30.80 | 24.99 | 16.30 | 19.20 | 7.90 | 2.77 | 12.60 |
| 15 | 1.541 | 1.312 | 0.971 | 1.091 | 0.311 | 0.109 | 0.496 |
| | 39.14 | 33.32 | 24.65 | 27.70 | 7.90 | 2.77 | 12.60 |
| 25 | 2.087 | 1.852 | 1.512 | 1.618 | 0.311 | 0.109 | 0.496 |
| | 53.00 | 47.04 | 38.40 | 41.10 | 7.90 | 2.77 | 12.60 |
| 37 | 2.728 | 2.500 | 2.157 | 2.256 | 0.311 | 0.109 | 0.496 |
| | 69.29 | 63.50 | 54.80 | 57.30 | 7.90 | 2.77 | 12.60 |
| 50 | 2.638 | 2.406 | 2.055 | 2.169 | 0.429 | 0.109 | 0.602 |
| | 67.00 | 61.00 | 52.20 | 55.10 | 10.90 | 2.77 | 15.30 |



171-YYY-20YLYY1

SERIES _____
POSITIONS _____
 009 _____
 015 _____
 025 _____
 037 _____
 050 _____
GENDER _____
 1 = MALE
 2 = FEMALE
TERMINATION _____
 0 = SOLDER CUP
SHELL PLATING _____
 2 = TIN
 3 = NICKEL
HARDWARE OPTIONS _____
 00 = NO HARDWARE
 01 = .098 4-40 CLINCH NUT BOARD SIDE
 02 = .236 4-40 CLINCH NUT BOARD SIDE
 03 = .236 4-40 CLINCH NUT MATING SIDE
 05 = .237 4-40 BOARD LOCK
 91 = .237 4-40 SPACER/BOARD LOCK
PLATING OPTIONS _____
 1 = GOLD FLASH
 2 = 30 MICRO-INCH GOLD

WILL ACCEPT 28-20 AWG CONDUCTORS

RoHS COMPLIANT

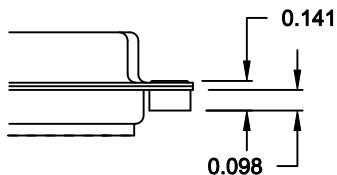
DO NOT SCALE FROM DRAWING

| | | | | |
|----------------|---|--------------------------------|----------------------------|----------------------|
| | THESE DRAWINGS AND SPECIFICATIONS ARE THE PROPERTY OF NorComp AND SHALL NOT BE REPRODUCED, COPIED OR USED AS THE BASIS FOR THE MANUFACTURE OF SALE OF APPARATUS WITHOUT WRITTEN PERMISSION. | | DRAWN: PAM JENKINS | DATE: 9-13-05 |
| | | | CHECKED: | DATE: |
| NorComp | | SCALE: | SHEET 1 OF 2 | REV 9 |
| | | DWG NO. 171-YYY-20YLYY1 | | |

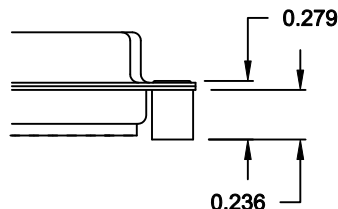
TOLERANCE:
ALL DIMENSIONS ARE ±0.010

ALL CLINCH-NUTS ARE 4-40 INTERNAL THREADS

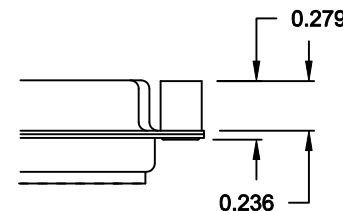
01X 0.098" (BOARD SIDE) - CN1



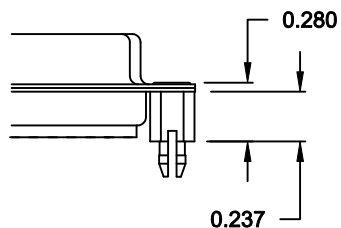
02X 0.236" (BOARD SIDE) - CN2



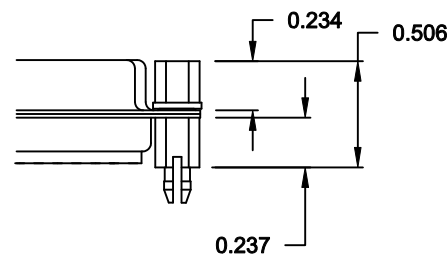
03X..... 0.236" (MATING SIDE) - CN8



05X 0.237" (BOARD SIDE) - CN10




91X 0.237" BOARD SIDE
0.197" MATING SIDE
CN10/SFSO4404



NOTE: 4-40 FEMALE SCREW LOCK IS REMOVABLE

DO NOT SCALE FROM DRAWING

RoHS COMPLIANT

| | | | | |
|--|---|--------------------------------|--------------------------------|--------------------------|
|  | THESE DRAWINGS AND SPECIFICATIONS ARE THE PROPERTY OF NorComp AND SHALL NOT BE REPRODUCED, COPIED OR USED AS THE BASIS FOR THE MANUFACTURE OF SALE OF APPARATUS WITHOUT WRITTEN PERMISSION. | | DRAWN: WAYNE ROBBINS | DATE: 11-28-05 |
| | | | CHECKED: | DATE: |
| <h1>NorComp</h1> | | SCALE: | SHEET 2 OF 2 | REV 9 |
| | | DWG NO. 171-YYY-20YLYY1 | | |