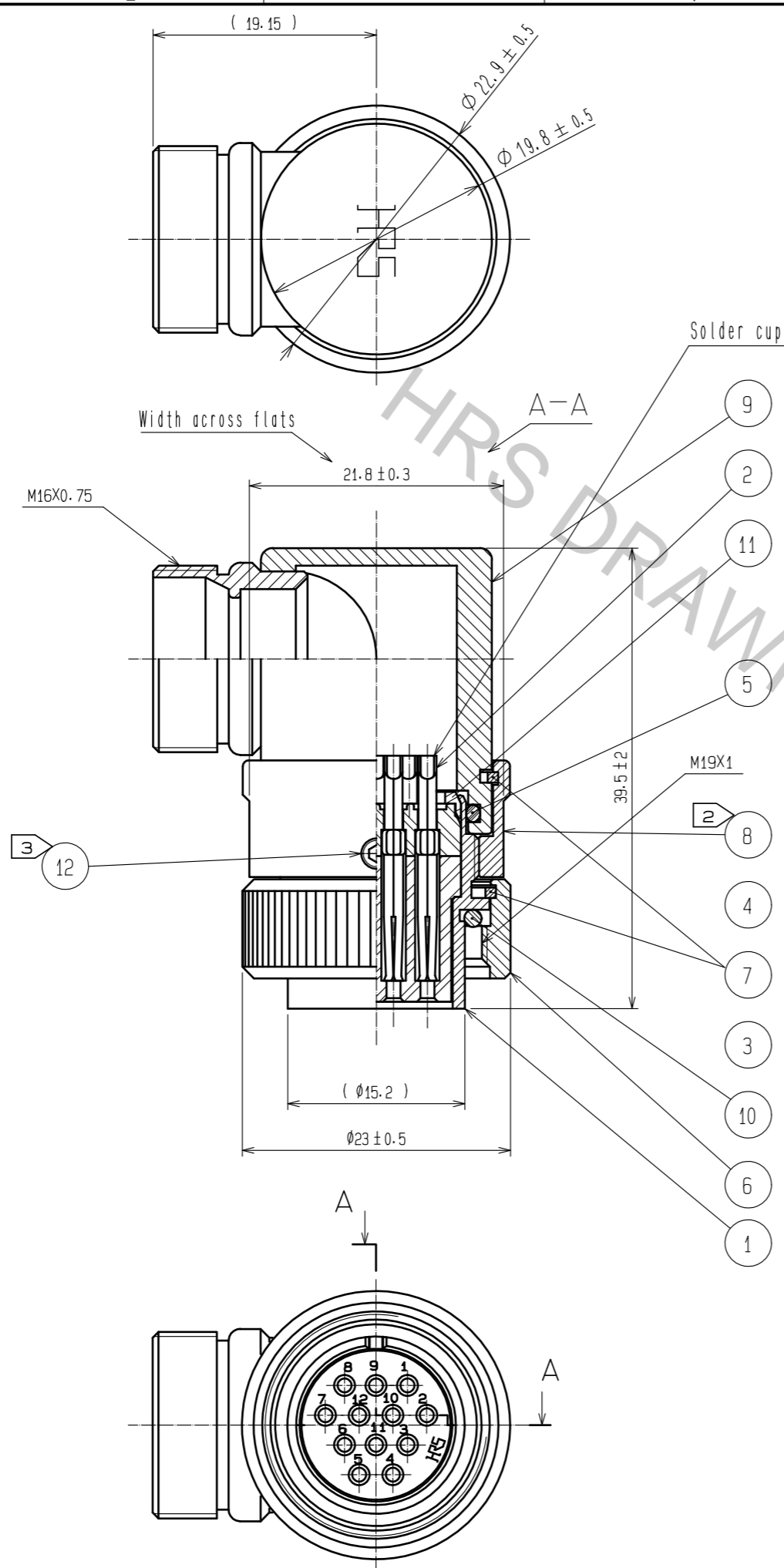


Aug.1.2018 Copyright 2018 HIROSE ELECTRIC CO., LTD. All Rights Reserved.  
 In case that the application demands a high level of reliability, such as automotive,  
 please contact a company representative for further information.



Notes

- 1 One example of the rotations of REF.NO. ①, ⑧ and ⑨ is shown.
- ② The recommended tightening torque of REF.NO. ⑧ : 3 to 4 N·m.  
 LOCTITE 243, HENKEL JAPAN or equivalent is recommended to prevent REF.NO. ⑧ from loosening.
- ③ The recommended tightening torque of REF.NO. ⑫ : 0.2 to 0.3 N·m.  
 LOCTITE 243, HENKEL JAPAN or equivalent is recommended to prevent REF.NO. ⑫ from loosening.
- 4 This product to be used with cable clamp, JR13WCC-\*(72).  
 \* designate diameter(mm) of applicable cable.  
 The cable pull and twisting strength (, waterproof tightness) and other characteristics may differ,  
 depending on the cable structure. please confirm before the use.

6	Brass	Nickel plating	12	Stainless steel	
5	Diallyl phthalate	(Gray)	11	Polyacetal	(White)
4	Diallyl phthalate	(Black) UL94V-0	10	Acrylonitrile butadiene rubber	(Gray)
3	Diallyl phthalate	(Black) UL94V-0	9	Brass	Nickel plating
2	Copper alloy	Silver plating 5μm min.	8	Brass	Nickel plating
1	Brass	Nickel plating	7	Phosphor bronze	Nickel plating
NO.	MATERIAL	FINISH . REMARKS	NO.	MATERIAL	FINISH . REMARKS

UNITS mm		SCALE 2 : 1	COUNT 	DESCRIPTION OF REVISIONS	DESIGNED	CHECKED	DATE
HIROSE ELECTRIC CO., LTD.				APPROVED : HY. KOBAYASHI 18.04.09 CHECKED : HY. KOBAYASHI 18.04.09 DESIGNED : HY. KISHI 18.04.09 DRAWN : HY. KISHI 18.04.09	DRAWING NO. EDC-115834-31-00 PART NO. RM15WTLP-12S(31) CODE NO. CL109-1911-9-31		
				1/1			