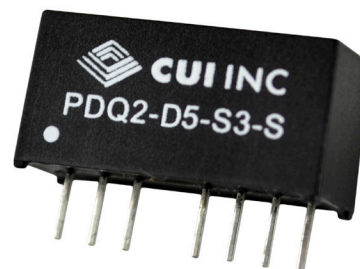


SERIES: PDQ2-S | DESCRIPTION: DC-DC CONVERTER
FEATURES

- up to 2 W isolated output
- industry standard SIP-8 package
- nominal input voltages: 5, 12, 24, 48 Vdc
- 2:1 input range
- single/dual regulated output
- 1,500 Vdc isolation voltage
- remote on/off control
- -40 to 100°C
- efficiency up to 84%



MODEL	input voltage		output voltage	output current		output power	ripple & noise ¹	efficiency
	typ (Vdc)	range (Vdc)	(Vdc)	min (mA)	max (mA)	max (W)	max (mVp-p)	typ (%)
PDQ2-D5-S3-S	5	4.5~9	3.3	0	500	1.65	75	73
PDQ2-D5-S5-S	5	4.5~9	5	0	400	2	75	76
PDQ2-D5-S12-S	5	4.5~9	12	0	167	2	75	80
PDQ2-D5-S15-S	5	4.5~9	15	0	134	2	75	80
PDQ2-D5-D5-S	5	4.5~9	±5	0	±200	2	75	77
PDQ2-D5-D12-S	5	4.5~9	±12	0	±83	2	75	79
PDQ2-D5-D15-S	5	4.5~9	±15	0	±67	2	75	80
PDQ2-D12-S3-S	12	9~18	3.3	0	500	1.65	75	76
PDQ2-D12-S5-S	12	9~18	5	0	400	2	75	79
PDQ2-D12-S12-S	12	9~18	12	0	167	2	75	82
PDQ2-D12-S15-S	12	9~18	15	0	134	2	75	83
PDQ2-D12-D5-S	12	9~18	±5	0	±200	2	75	79
PDQ2-D12-D12-S	12	9~18	±12	0	±83	2	75	82
PDQ2-D12-D15-S	12	9~18	±15	0	±67	2	75	83
PDQ2-D24-S3-S	24	18~36	3.3	0	500	1.65	75	76
PDQ2-D24-S5-S	24	18~36	5	0	400	2	75	79
PDQ2-D24-S12-S	24	18~36	12	0	167	2	75	82
PDQ2-D24-S15-S	24	18~36	15	0	134	2	75	83
PDQ2-D24-D5-S	24	18~36	±5	0	±200	2	75	79
PDQ2-D24-D12-S	24	18~36	±12	0	±83	2	75	81
PDQ2-D24-D15-S	24	18~36	±15	0	±67	2	75	84
PDQ2-D48-S3-S	48	36~75	3.3	0	500	1.65	75	74
PDQ2-D48-S5-S	48	36~75	5	0	400	2	75	79
PDQ2-D48-S12-S	48	36~75	12	0	167	2	75	82
PDQ2-D48-S15-S	48	36~75	15	0	134	2	75	84

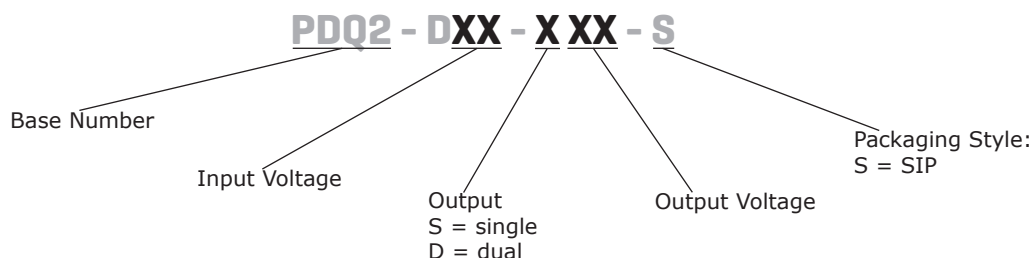
Notes: 1. At full load, nominal input, 20 MHz bandwidth oscilloscope.

2. All specifications are measured at Ta=25°C, nominal input voltage, and rated output load unless otherwise specified.

MODEL	input voltage		output voltage	output current		output power	ripple & noise ¹	efficiency
	typ (Vdc)	range (Vdc)	(Vdc)	min (mA)	max (mA)	max (W)	max (mVp-p)	typ (%)
PDQ2-D48-D5-S	48	36~75	±5	0	±200	2	75	78
PDQ2-D48-D12-S	48	36~75	±12	0	±83	2	75	82
PDQ2-D48-D15-S	48	36~75	±15	0	±67	2	75	84

Notes: 1. At full load, nominal input, 20 MHz bandwidth oscilloscope.
2. All specifications are measured at Ta=25°C, nominal input voltage, and rated output load unless otherwise specified.

PART NUMBER KEY



INPUT

parameter	conditions/description	min	typ	max	units
operating input voltage	5 Vdc input models	4.5	5	9	Vdc
	12 Vdc input models	9	12	18	Vdc
	24 Vdc input models	18	24	36	Vdc
	48 Vdc input models	36	48	75	Vdc
surge voltage	for maximum of 100 ms				
	5 Vdc input models			15	Vdc
	12 Vdc input models			25	Vdc
	24 Vdc input models			50	Vdc
current	48 Vdc input models			100	Vdc
	5 Vdc input models		580		mA
	12 Vdc input models		280		mA
	24 Vdc input models		140		mA
under voltage shutdown	48 Vdc input models		70		mA
	5 Vdc input models, power up			4.2	Vdc
	5 Vdc input models, power down	3			Vdc
	12 Vdc input models, power up			7.3	Vdc
remote on/off ³	12 Vdc input models, power down	5.8			Vdc
	24 Vdc input models, power up			15.5	Vdc
	24 Vdc input models, power down	12			Vdc
	48 Vdc input models, power up			31	Vdc
filter	48 Vdc input models, power down	24			Vdc
	capacitive				
input reverse polarity protection	no				
input fuse	turn on (<0.8 Vdc or open circuit)				
	turn off (4~15 Vdc)				
	1 A time delay fuse for 5 Vdc input models (recommended)				
	0.5 A time delay fuse for 12 Vdc input models (recommended)				
	0.25 A time delay fuse for 24 & 48 Vdc input models (recommended)				

Notes: 3. CMOS or open collector TTL, reference to -Vin.

OUTPUT

parameter	conditions/description	min	typ	max	units
maximum capacitive load	3.3 Vdc output models			500	μF
	5 Vdc output models			400	μF
	12 Vdc output models			167	μF
	15 Vdc output models			134	μF
	±5 Vdc output models			200	μF
	±12 Vdc output models			83	μF
	±15 Vdc output models			67	μF
voltage accuracy				±1.5	%
line regulation	from high line to low line			±0.5	%
load regulation	from 100% load to minimum load			±0.5	%
	single output models			±1	%
	dual output models				
voltage balance	dual output models			±1	%
cross regulation ¹	load cross variation 25%/100% (dual output models)			±5	%
turn-on delay time, from input	from Vin, min to 10% Vo		1		ms
turn-on delay time, from on/off control	from Von/off to 10% Vo		1		ms
rise time	from 10% Vo to 90% Vo		2.5		ms
switching frequency	at nominal Vin, full load	100			kHz
dynamic load response	25% step load change		± 6		%
	error band (Vout) recovery time			500	μs
temperature coefficient			±0.03		%/°C

Note: 1. For asymmetric loading, both outputs must be at least 25% load.

PROTECTIONS

parameter	conditions/description	min	typ	max	units
over current protection		120			%
short circuit protection	continuous, automatic recovery				

SAFETY AND COMPLIANCE

parameter	conditions/description	min	typ	max	units
isolation voltage	input to output for 1 minute	1,500			Vdc
isolation resistance	input to output	1,000			MΩ
isolation capacitance	input to output		500		pF
conducted emissions	EN 55022 Class A & Class B (external circuit required, see Figure 3)				
MTBF	as per MIL-HDBK-217F, full load, GB, 25°C		2,500,000		hours
RoHS	2011/65/EU				

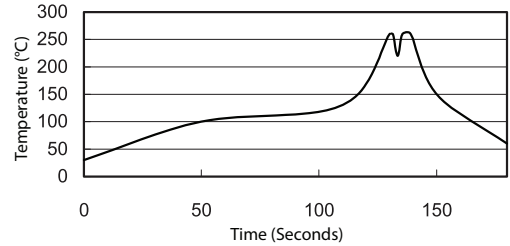
ENVIRONMENTAL

parameter	conditions/description	min	typ	max	units
operating temperature	see derating curve	-40		100	°C
storage temperature		-55		125	°C
operating humidity	non-condensing			95	%

SOLDERABILITY

parameter	conditions/description	min	typ	max	units
wave soldering	see wave soldering profile			260	°C

- Notes:
1. Soldering materials: Sn/Cu/Ni
 2. Ramp up rate during preheat: 1.4°C/s (from 50°C to 100°C)
 3. Soaking temperature: 0.5°C/s (from 100°C to 130°C), 60±20 seconds
 4. Peak temperature: 260°C, above 250°C for 3~6 seconds
 5. Ramp down rate during cooling: -10°C/s (from 260°C to 150°C)



MECHANICAL

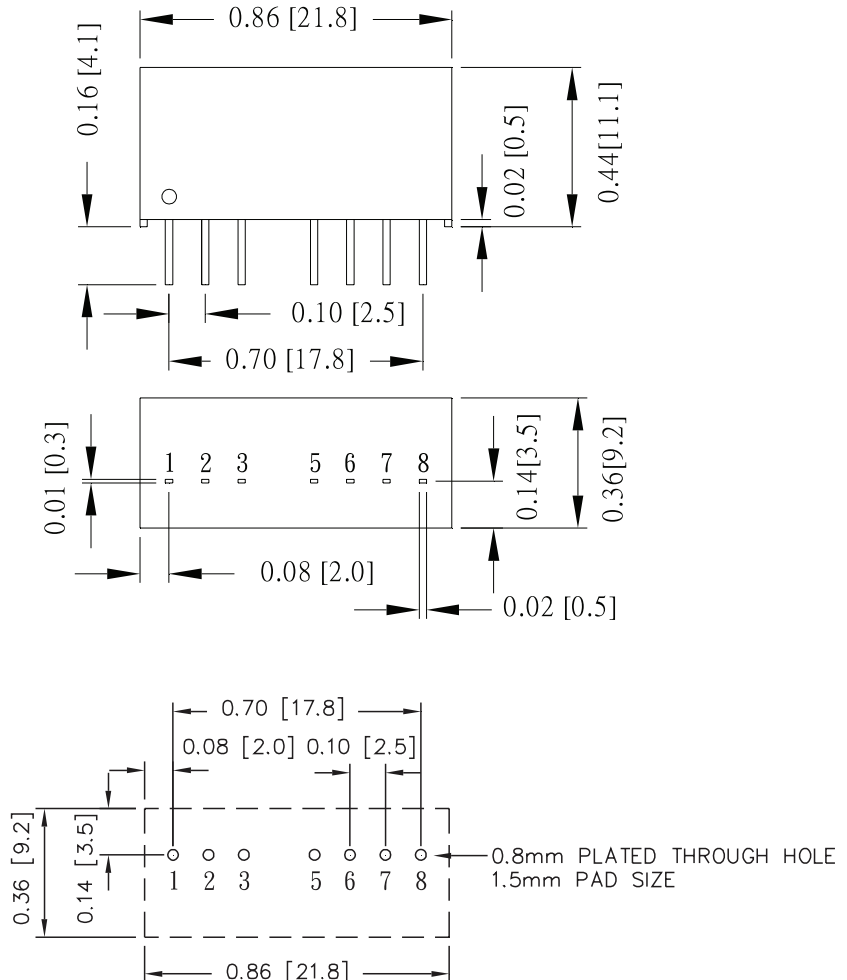
parameter	conditions/description	min	typ	max	units
dimensions	0.86 x 0.36 x 0.44 (21.80 x 9.20 x 11.10 mm)				inches
case material	non-conductive black plastic				
weight			4.8		g

MECHANICAL DRAWING

units: inches [mm]
 tolerance: X.XX ±0.02 [±0.5]
 pin section tolerance: ±0.002[±0.05]

PIN CONNECTIONS		
PIN	Function	
	Single	Dual
1	-Vin	-Vin
2	+Vin	+Vin
3	on/off	on/off
5	NC	NC
6	+Vout	+Vout
7	-Vout	common
8	NC	-Vout

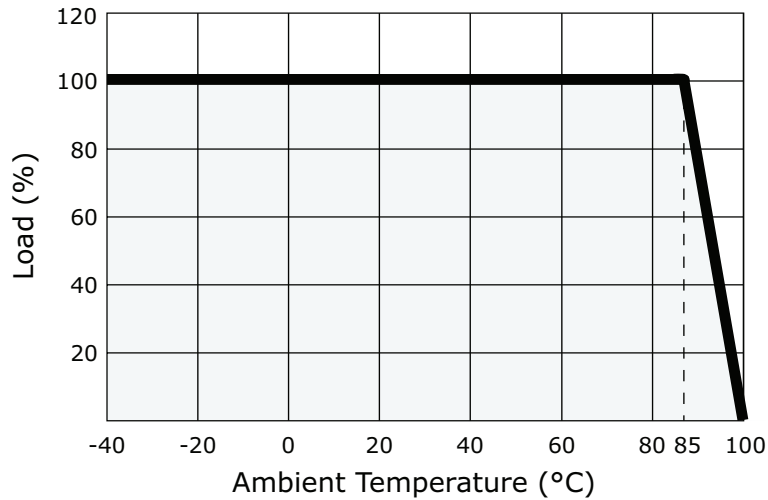
NC=no connection



Recommended PCB Layout
Top View

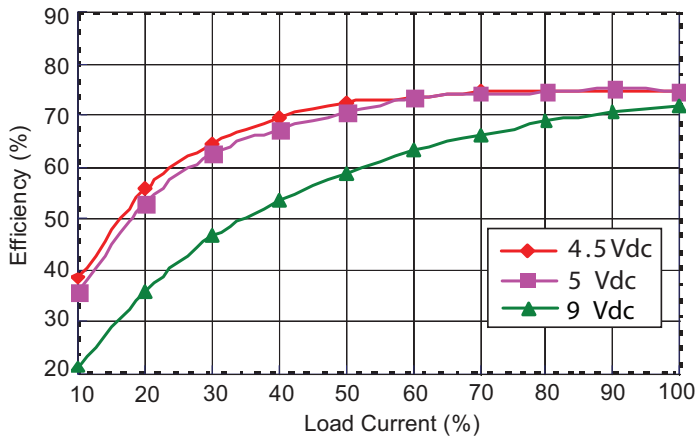
DERATING CURVE

Temperature Derating Curve
(Natural Convection)

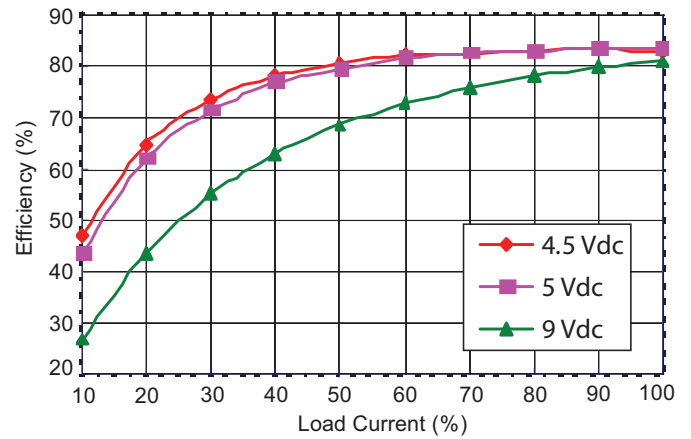


EFFICIENCY CURVES

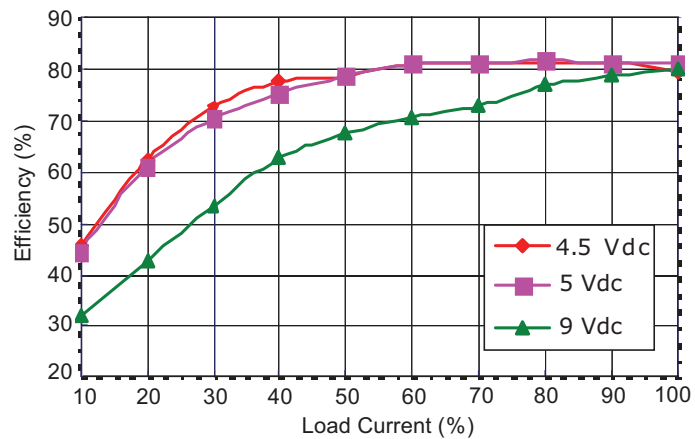
PDQ2-D5-S3-S Efficiency Curve
(Efficiency vs. Line Voltage and Load Current)



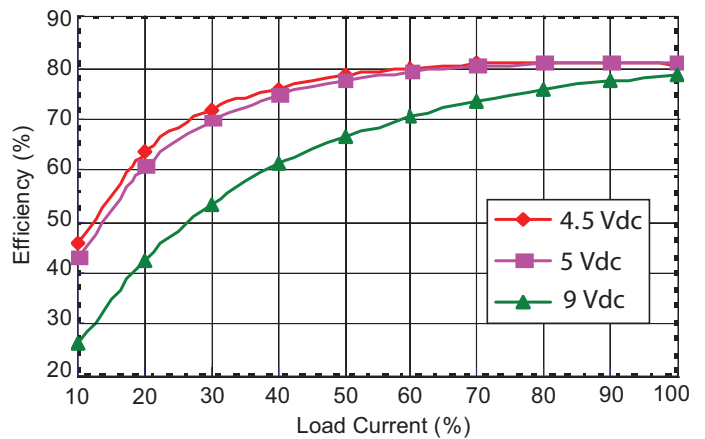
PDQ2-D5-S12-S Efficiency Curve
(Efficiency vs. Line Voltage and Load Current)



PDQ2-D5-S15-S Efficiency Curve
(Efficiency vs. Line Voltage and Load Current)

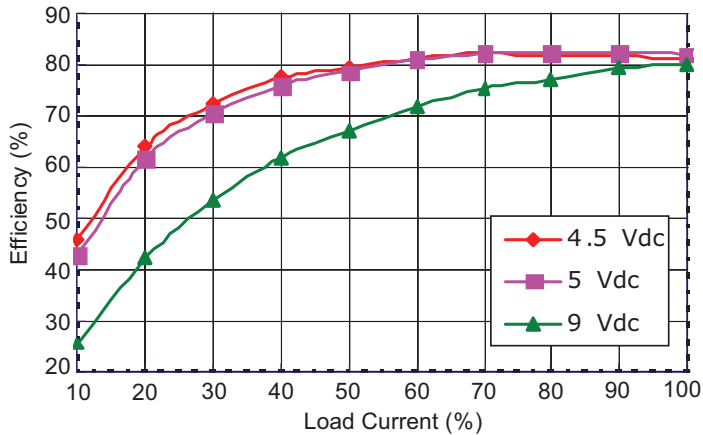


PDQ2-D5-D5-S Efficiency Curve
(Efficiency vs. Line Voltage and Load Current)

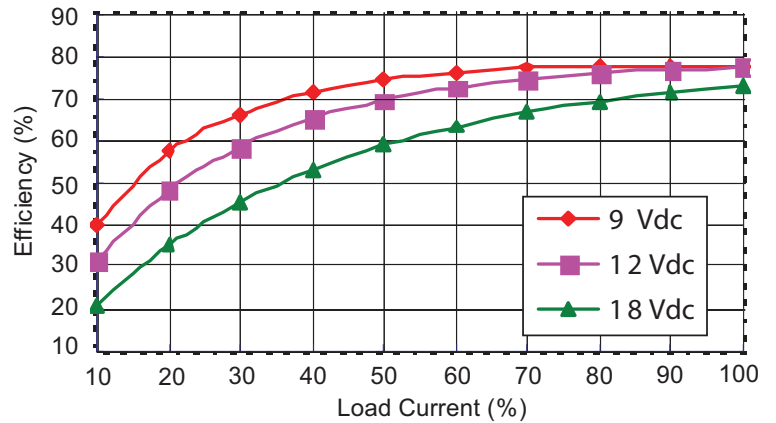


EFFICIENCY CURVES (CONTINUED)

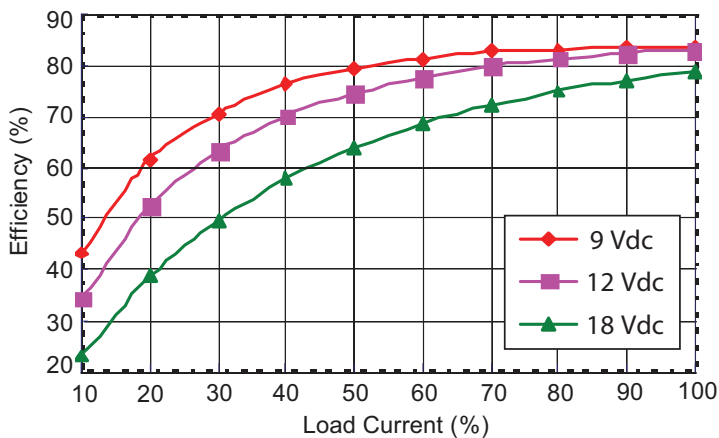
PDQ2-D5-D15-S Efficiency Curve
(Efficiency vs. Line Voltage and Load Current)



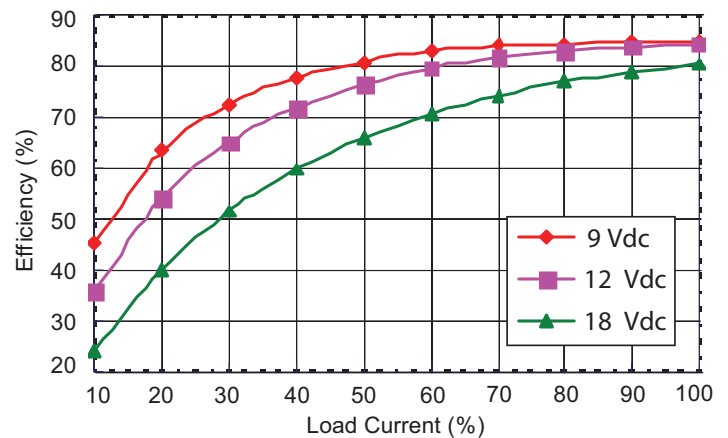
PDQ2-D12-S3-S Efficiency Curve
(Efficiency vs. Line Voltage and Load Current)



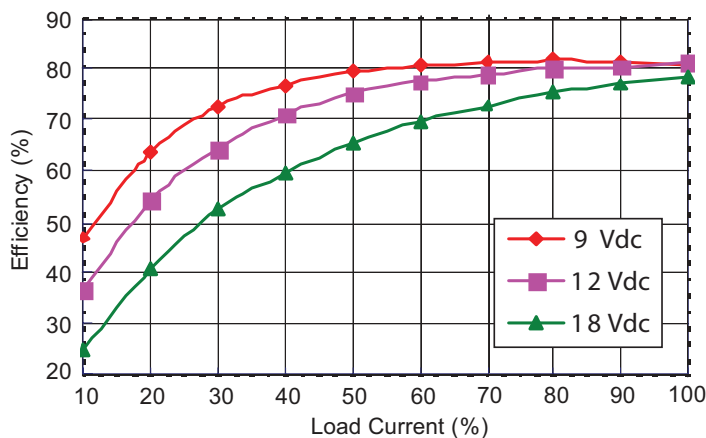
PDQ2-D12-S12-S Efficiency Curve
(Efficiency vs. Line Voltage and Load Current)



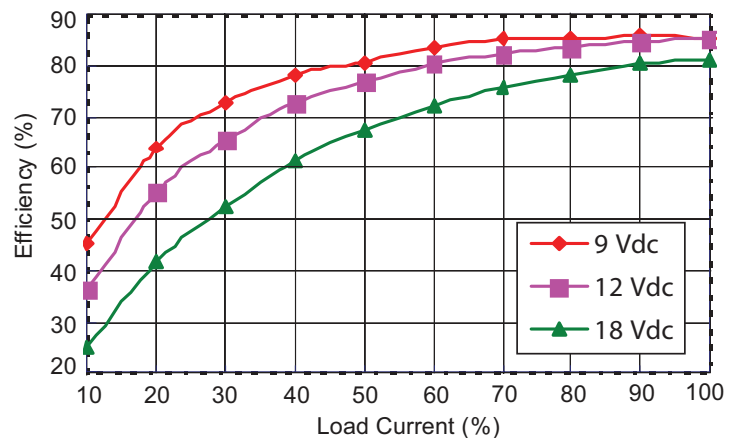
PDQ2-D12-S15-S Efficiency Curve
(Efficiency vs. Line Voltage and Load Current)



PDQ2-D12-D5-S Efficiency Curve
(Efficiency vs. Line Voltage and Load Current)

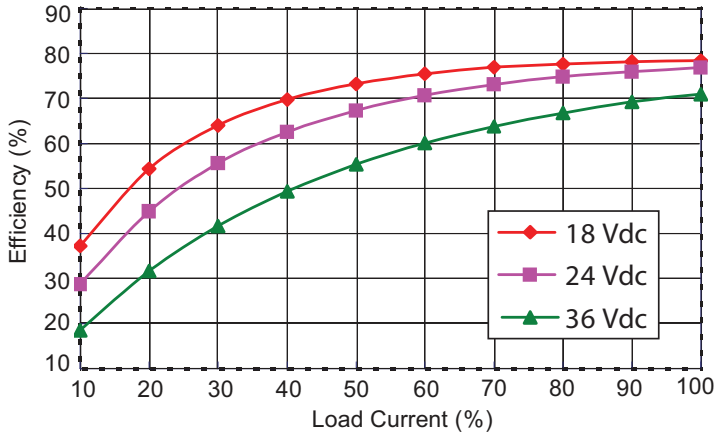


PDQ2-D12-D15-S Efficiency Curve
(Efficiency vs. Line Voltage and Load Current)

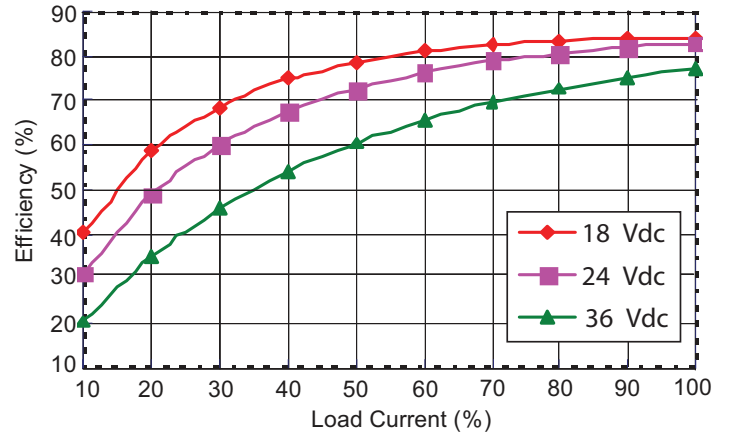


EFFICIENCY CURVES (CONTINUED)

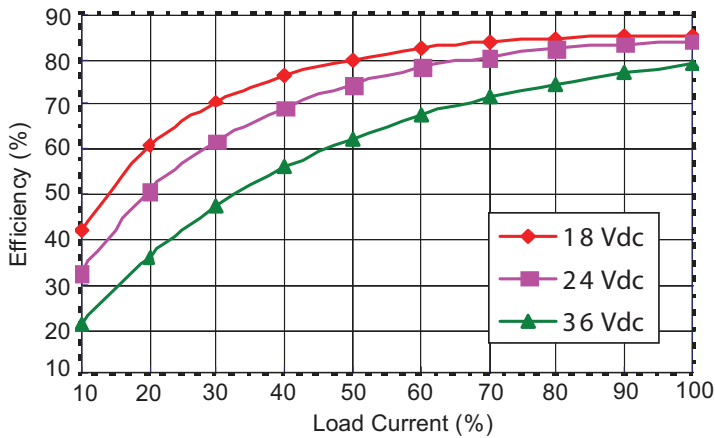
PDQ2-D24-S3-S Efficiency Curve
(Efficiency vs. Line Voltage and Load Current)



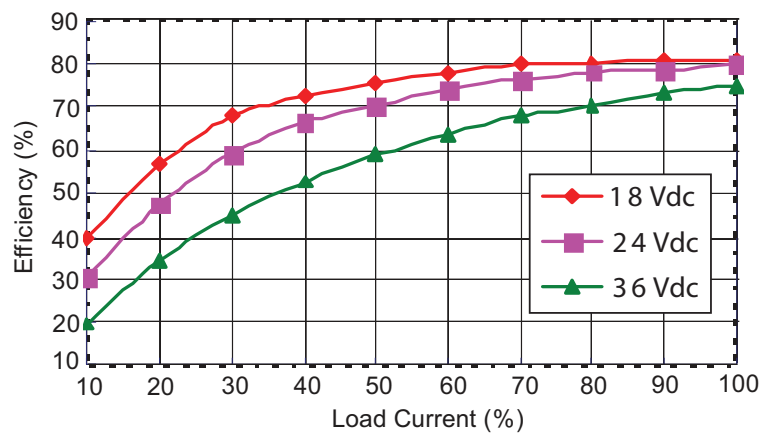
PDQ2-D24-S12-S Efficiency Curve
(Efficiency vs. Line Voltage and Load Current)



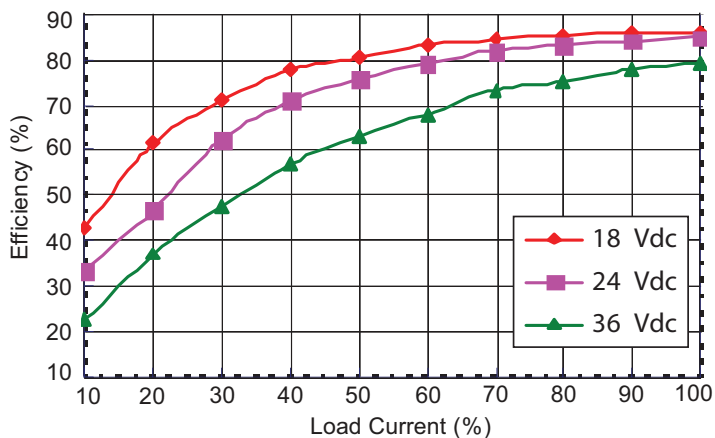
PDQ2-D24-S15-S Efficiency Curve
(Efficiency vs. Line Voltage and Load Current)



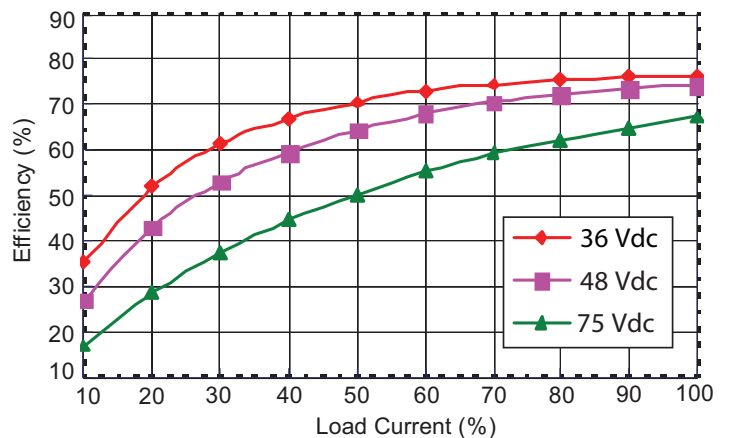
PDQ2-D24-D5-S Efficiency Curve
(Efficiency vs. Line Voltage and Load Current)



PDQ2-D24-D15-S Efficiency Curve
(Efficiency vs. Line Voltage and Load Current)

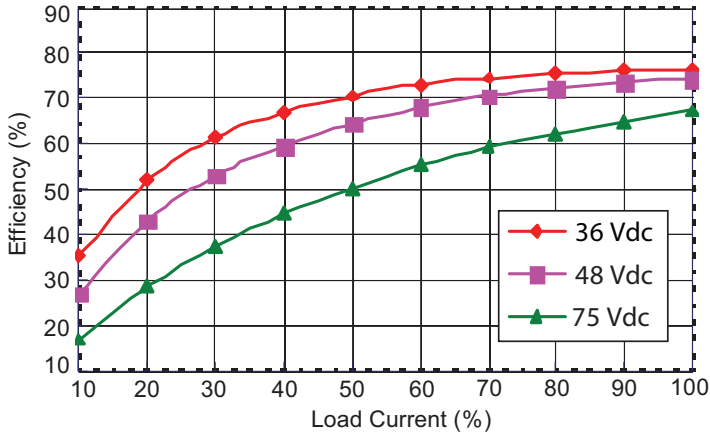


PDQ2-D48-S3-S Efficiency Curve
(Efficiency vs. Line Voltage and Load Current)

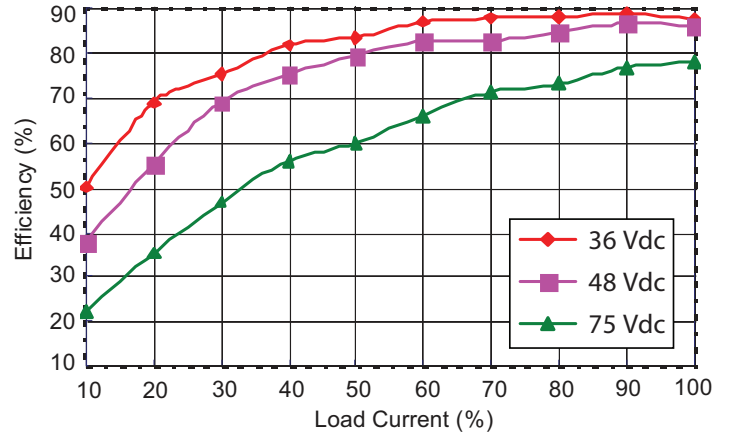


EFFICIENCY CURVES (CONTINUED)

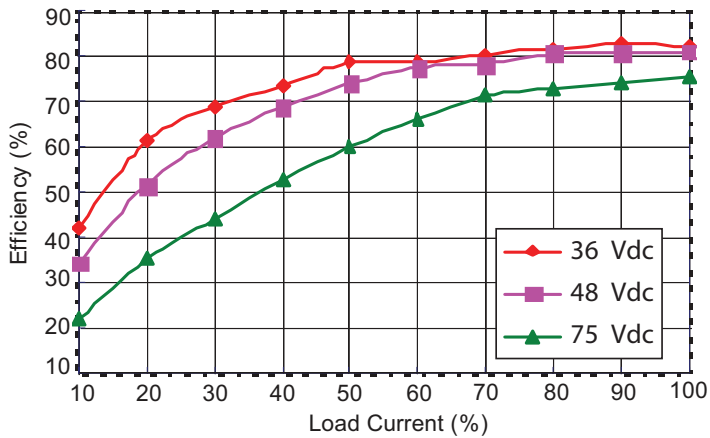
PDQ2-D48-S12-S Efficiency Curve
(Efficiency vs. Line Voltage and Load Current)



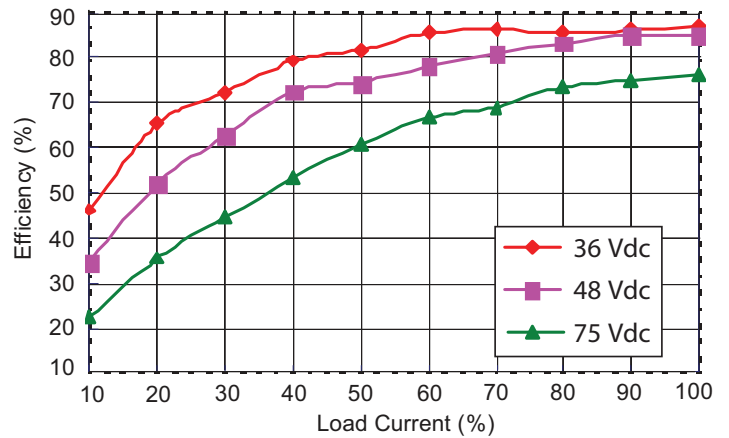
PDQ2-D48-S15-S Efficiency Curve
(Efficiency vs. Line Voltage and Load Current)



PDQ2-D48-D5-S Efficiency Curve
(Efficiency vs. Line Voltage and Load Current)



PDQ2-D48-D15-S Efficiency Curve
(Efficiency vs. Line Voltage and Load Current)



TEST CONFIGURATIONS

Input Ripple Current & Output Noise

Figure 1 Measuring Input Ripple Current

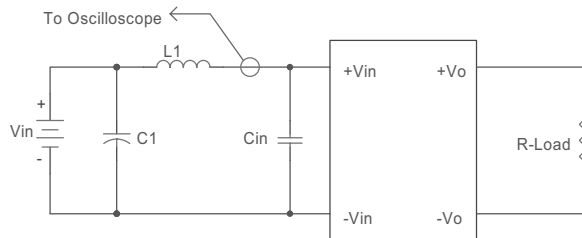


Table 1

L1	12 μ H
C1	NC
Cin	33 μ F ESR<0.7 Ω at 100 kHz

Figure 2 Measuring Output Ripple And Noise

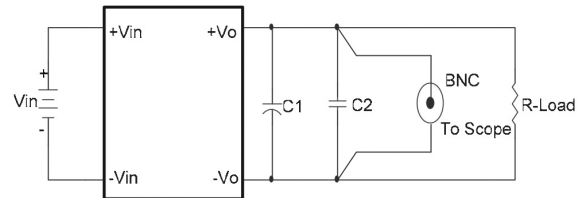


Table 2

C1	NC
C2	NC

EMC RECOMMENDED CIRCUIT

Test Condition

Input Voltage: Nominal

Output Load: Full Load

Figure 3 Conducted Emissions Test Circuit

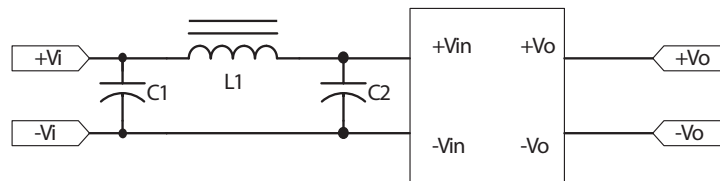


Table 3

EN55022 Class A Recommended External Circuit Components			
Input Voltage (Vdc)	C1 ¹	C2	L1
5	10 μ F / 16 V	NC	2.2 μ H
12	2.2 μ F / 25 V	NC	12 μ H
24	4.7 μ F / 50 V	NC	12 μ H
48	1 μ F / 100 V	NC	68 μ H

Notes: 1. Ceramic Capacitor

Table 4

EN55022 Class B Recommended External Circuit Components			
Input Voltage (Vdc)	C1 ¹	C2	L1
5	10 μ F / 25 V	NC	10 μ H
12	2.2 μ F / 25 V	NC	33 μ H
24	6.8 μ F / 50 V	NC	33 μ H
48	2.2 μ F / 100 V	NC	150 μ H

Notes: 1. Ceramic Capacitor

REVISION HISTORY

rev.	description	date
1.0	initial release	07/26/2016

The revision history provided is for informational purposes only and is believed to be accurate.



CUI INC[®]

Headquarters
20050 SW 112th Ave.
Tualatin, OR 97062
800.275.4899

Fax 503.612.2383
cui.com
techsupport@cui.com

CUI offers a two (2) year limited warranty. Complete warranty information is listed on our website.

CUI reserves the right to make changes to the product at any time without notice. Information provided by CUI is believed to be accurate and reliable. However, no responsibility is assumed by CUI for its use, nor for any infringements of patents or other rights of third parties which may result from its use.

CUI products are not authorized or warranted for use as critical components in equipment that requires an extremely high level of reliability. A critical component is any component of a life support device or system whose failure to perform can be reasonably expected to cause the failure of the life support device or system, or to affect its safety or effectiveness.