

±.001

FILE NO.

BB-CD-101-02

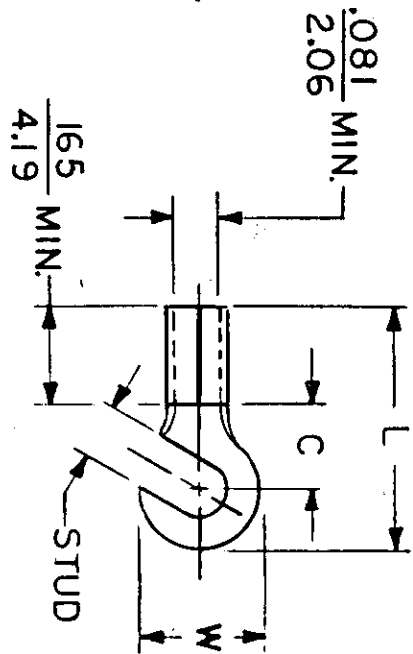
- NOTES:
- ① MAT'L : COPPER (STOCK TKN.  $\frac{.031}{.79}$ )
- PLATING : ELECTRO-TIN (.0003 MIN.)

STUD SIZES: ( $\pm .005$ )

- 02 = .094
- 04 = .119
- 06 = .146
- 08 = .173
- 10 = .198
- 14 = .265
- 56 = .328
- 38 = .390

“UL” LISTING #E32244  
“CSA” LISTING #18689

ALL DIMENSIONS = INCHES  
MM



WIRE SIZE: 16-14 AWG  
1.0 - 2.5 MM<sup>2</sup>

PART NUMBER	“W” $\pm .010$	“C” MIN.	“L” MAX.	AVAILABLE STUD SIZES

DIMENSIONAL TOLERANCES UNLESS OTHERWISE SPECIFIED			REFERENCE	SCALE:	NTS	DATE	TITLE:
FRAC.	DEC.	ANG.		DRWN. BY:	H <sup>c</sup>	10-18-84	HOOK TONGUE TERMINAL
±	±	±		CHKD. BY:	GZ	10-23-84	KRIMPTITE 100-SERIES
				APPRD. BY:			



DWG. NO. A CUSTOMER DWG.