

4

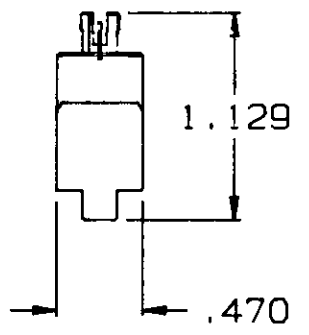
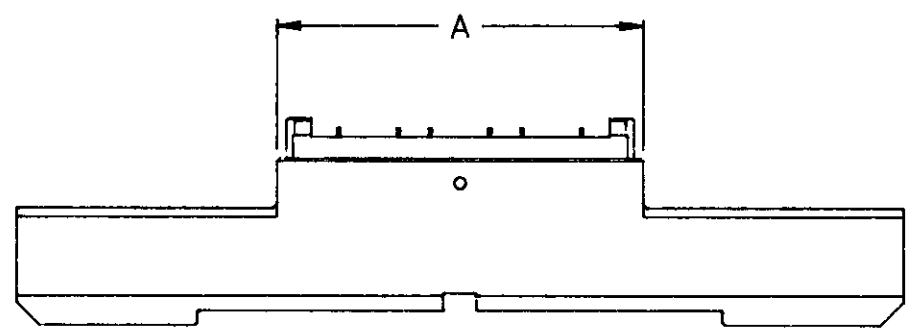
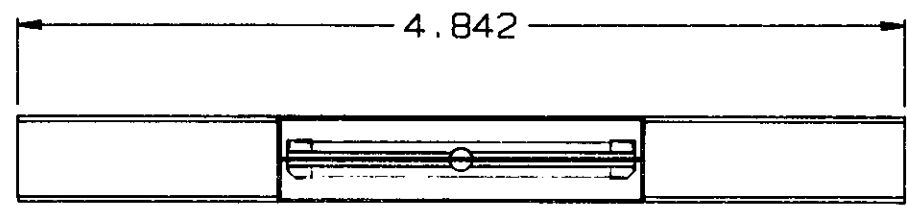
3

2


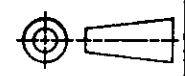
1

THIS DRAWING IS UNPUBLISHED. RELEASED FOR PUBLICATION .19
 © COPYRIGHT 19 BY AMP INCORPORATED. ALL RIGHTS RESERVED.

LOC	QTY	REVISIONS					
		#	LYR	DESCRIPTION	DATE	OWN	APVD
AD	47						
		A		REDRAWN PER EC 0430-0037-97	6-13-97	JG	DM



4.000	266	767570-7
3.500	228	767570-6
3.000	190	767570-5
2.500	152	767570-4
2.000	114	767570-3
1.500	76	767570-2
1.000	38	767570-1
A	FOR NO OF POSITIONS	PART NUMBER

THIS DRAWING IS A CONTROLLED DOCUMENT.		OWN J. GERACE 6-13-97	 AMP Incorporated Harrisburg, PA 17105-3608
DIMENSIONS: INCHES		CHK D. McKNIGHT 6-13-97	
		APVD A. MONK 6-13-97	
TOLERANCES UNLESS OTHERWISE SPECIFIED: 0 PLC ±- 1 PLC ±- 2 PLC ±- 3 PLC ±.010 4 PLC ±- ANGLES ±-		NAME SINGLE INSERTER, RECEPTACLE, MICTOR	
MATERIAL ALUMINUM	FINISH NICKEL	PRODUCT SPEC -	SIZE A3
		APPLICATION SPEC -	CAGE CODE 00779
		WEIGHT -	DRAWING NO C-767570
		CUSTOMER DRAWING	SCALE 1:1 SILET 1 OF 1 REV A