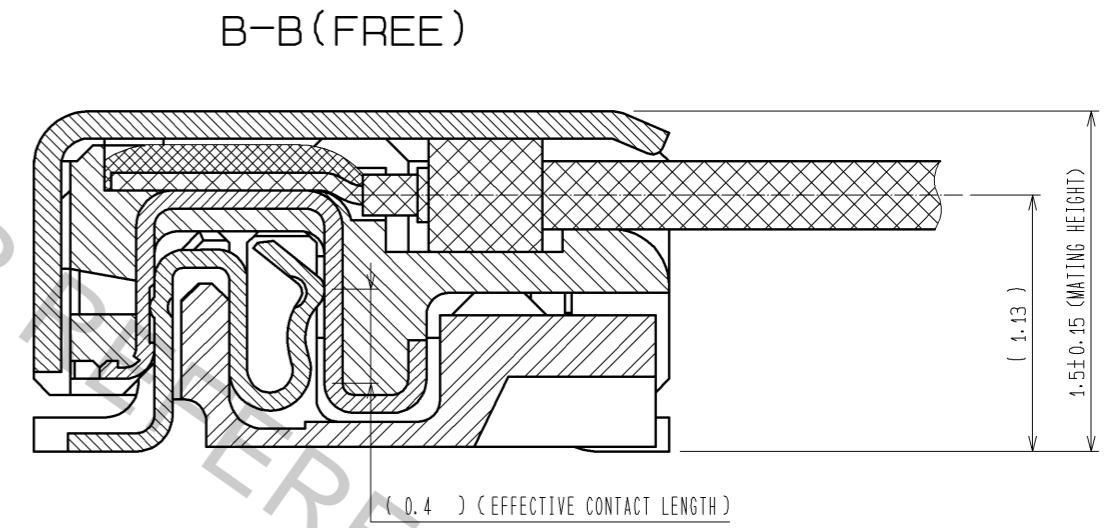
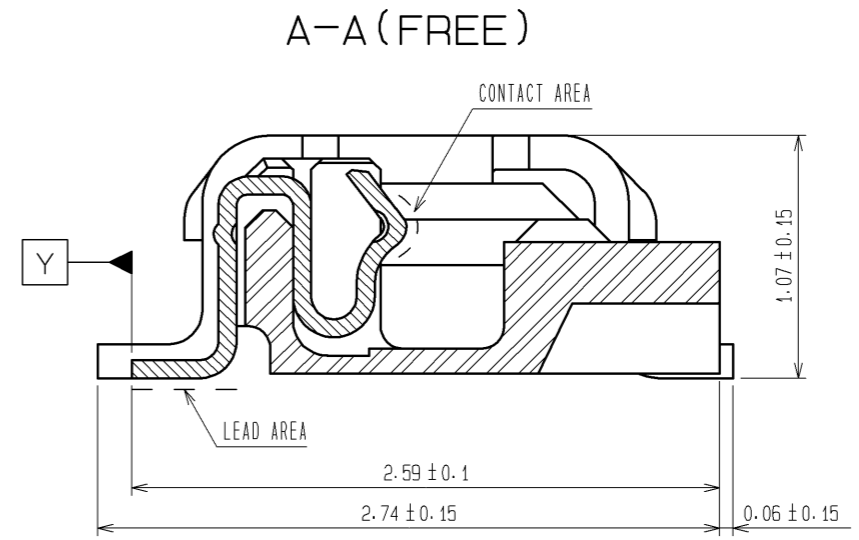
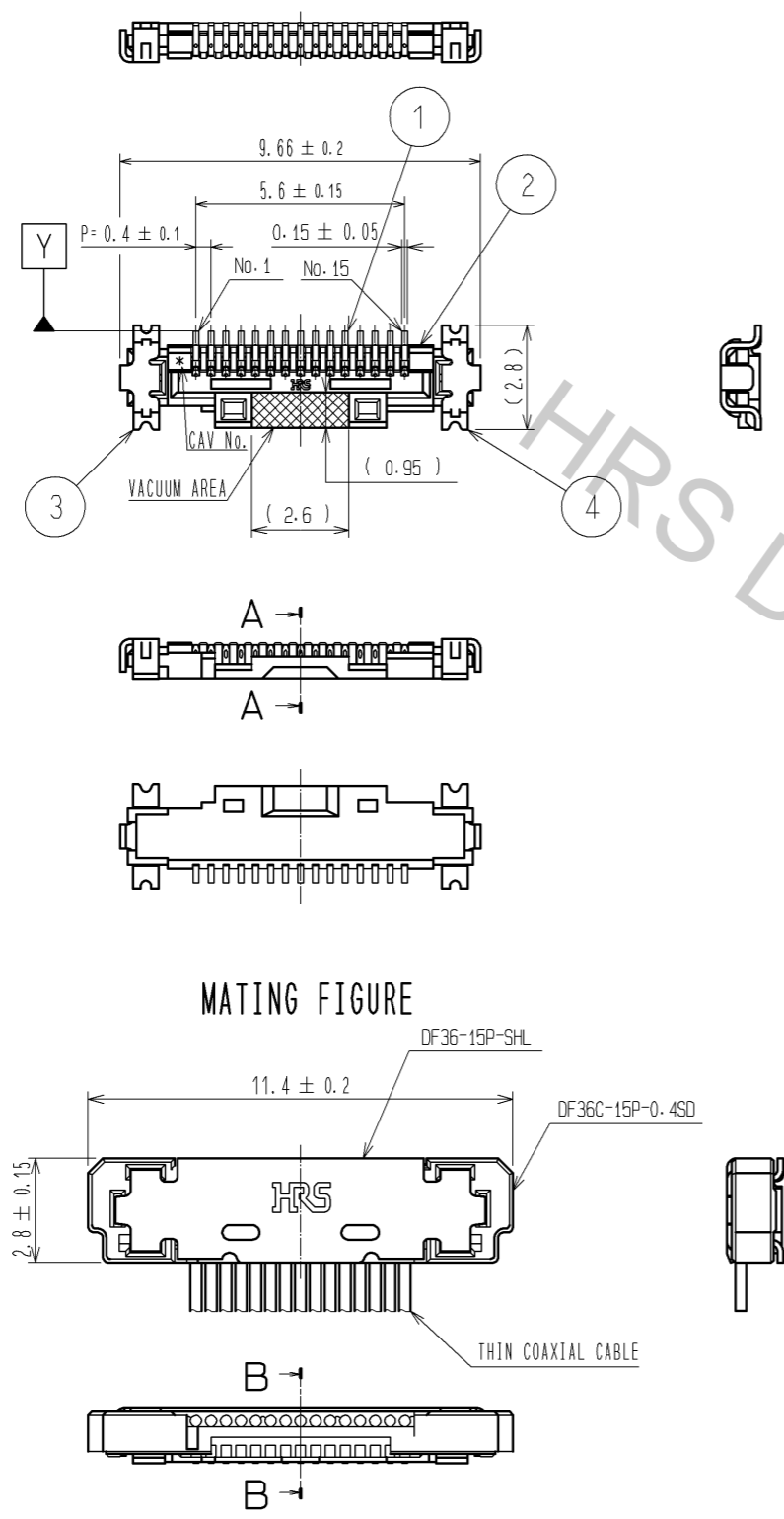


Apr.1.2017 Copyright 2017 HIROSE ELECTRIC CO., LTD. All Rights Reserved.

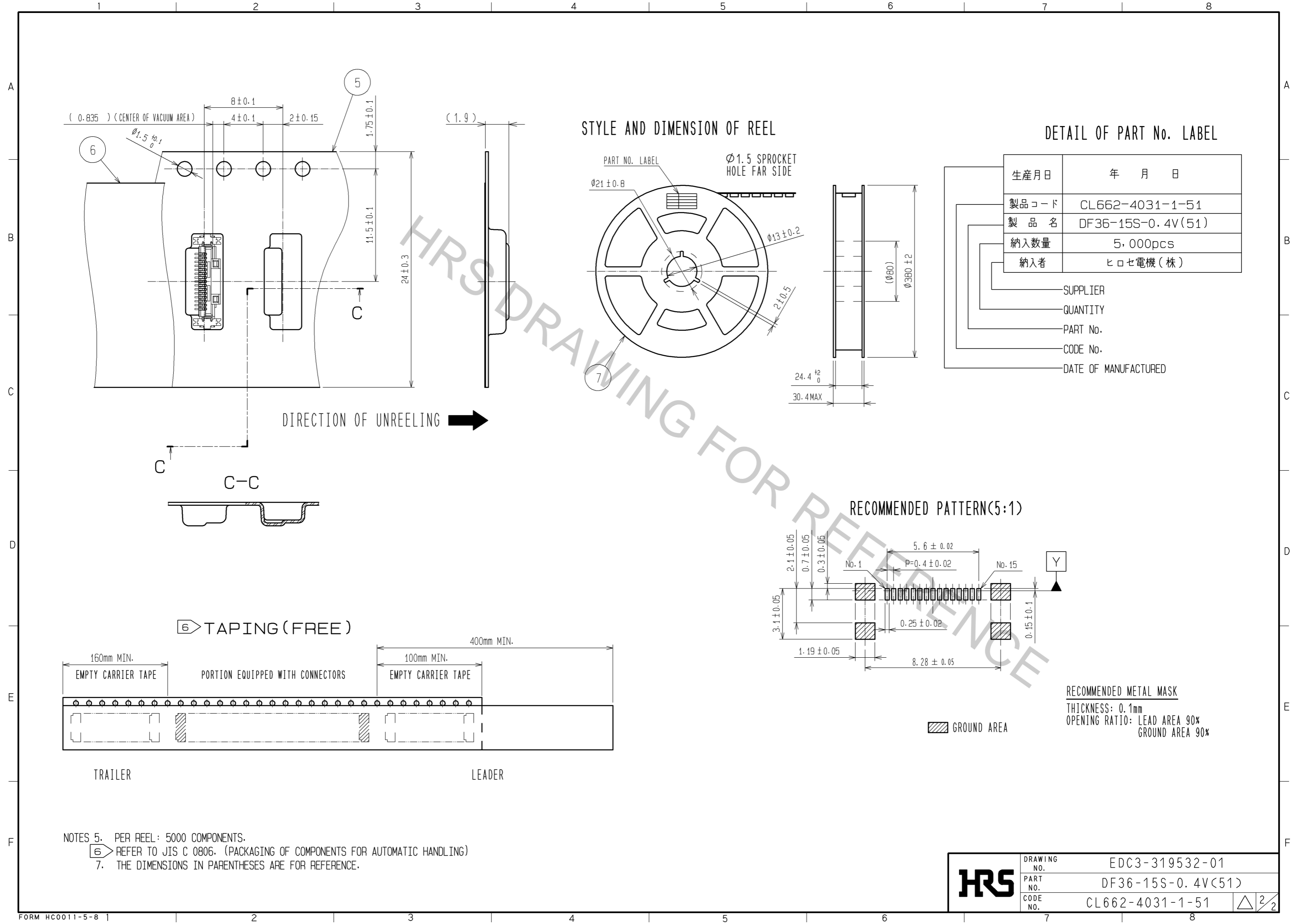


- NOTES
1. LEAD CO-PLANARITY SHALL BE 0.1mm MAX.
 2. STIFFENER IS REQUIRED FOR MOUNTING ONTO FPC IN ORDER TO AVOID STRESS BY FPC SLACKING TO MOUNTED CONNECTOR.
 3. UNMATING SHALL BE DONE WITH THE SPECIFIC EXTRACTION TOOL.

NO.	MATERIAL	FINISH . REMARKS	NO.	MATERIAL	FINISH . REMARKS
3	PHOSPHOR BRONZE	WHOLE AREA : Au PLATING 0.1μm min UNDER PLATING : Ni PLATING 2μm min	7	PS	BLACK
			6	POLYESTER	CLEAR
2	LCP	UL94V-0 . BLACK	5	PS	CLEAR
1	PHOSPHOR BRONZE	CONTACT AREA : Au PLATING 0.3μm min LEAD AREA : Au PLATING 0.1μm min UNDER PLATING : Ni PLATING 2μm min	4	PHOSPHOR BRONZE	WHOLE AREA : Au PLATING 0.1μm min UNDER PLATING : Ni PLATING 2μm min

UNITS	SCALE	COUNT	DESCRIPTION OF REVISIONS	DESIGNED	CHECKED	DATE
mm	5 : 1	△				
			APPROVED : TS. SAKATA	10.06.11	DRAWING NO. EDC3-319532-01	
			CHECKED : IO. DENPOUYA	10.06.11	PART NO. DF36-15S-0.4V(51)	
			DESIGNED : TP. MATSUMOTO	10.06.11	CODE NO. CL662-4031-1-51	
			DRAWN : TP. MATSUMOTO	10.06.11	1/2	

Apr.1.2017 Copyright 2017 HIROSE ELECTRIC CO., LTD. All Rights Reserved.



STYLE AND DIMENSION OF REEL

DETAIL OF PART No. LABEL

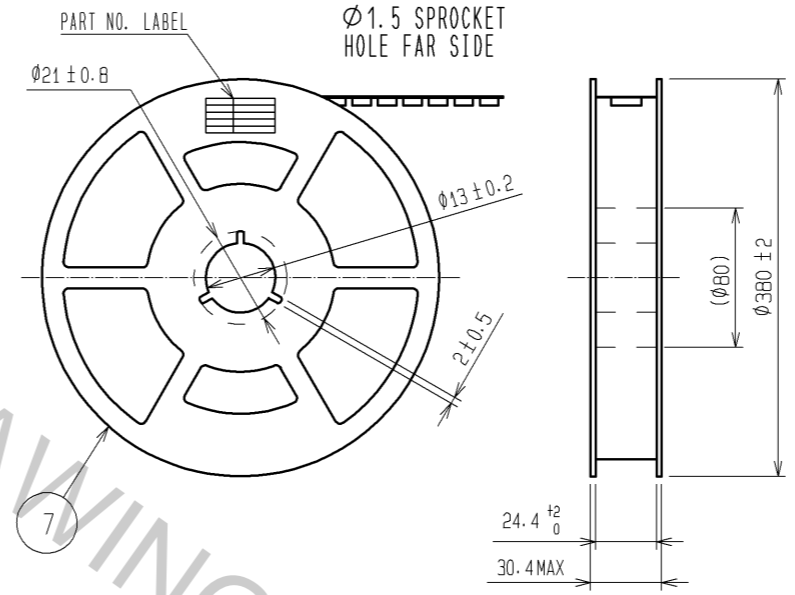
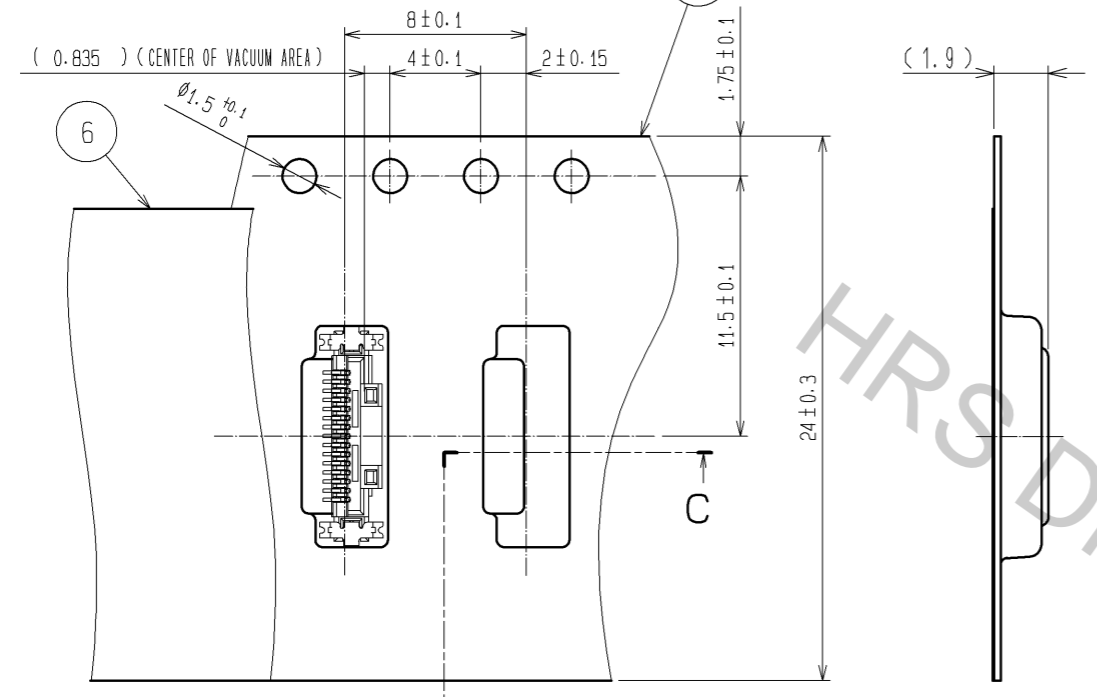
生産月日	年 月 日
製品コード	CL662-4031-1-51
製品名	DF36-15S-0.4V(51)
納入数量	5,000pcs
納入者	ヒロセ電機(株)

_____ SUPPLIER
 _____ QUANTITY
 _____ PART No.
 _____ CODE No.
 _____ DATE OF MANUFACTURED

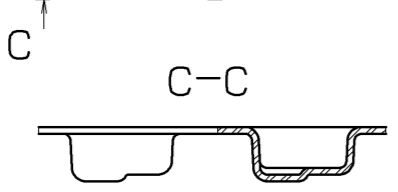
RECOMMENDED PATTERN(5:1)

RECOMMENDED METAL MASK
 THICKNESS: 0.1mm
 OPENING RATIO: LEAD AREA 90%
 GROUND AREA 90%

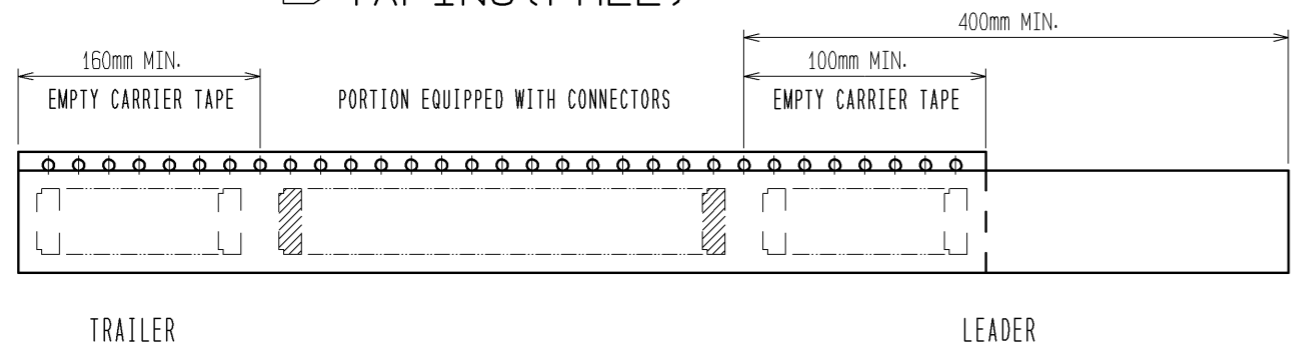
▨ GROUND AREA



DIRECTION OF UNREELING →



⑥ TAPING (FREE)



NOTES 5. PER REEL: 5000 COMPONENTS.
 ⑥ REFER TO JIS C 0806. (PACKAGING OF COMPONENTS FOR AUTOMATIC HANDLING)
 7. THE DIMENSIONS IN PARENTHESES ARE FOR REFERENCE.

HRS	DRAWING NO.	EDC3-319532-01
	PART NO.	DF36-15S-0.4V(51)
	CODE NO.	CL662-4031-1-51
		△ 2/2