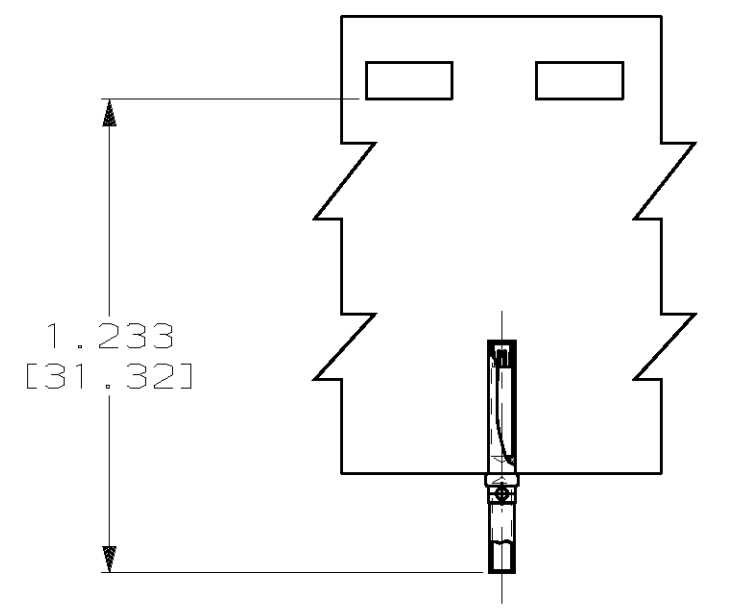
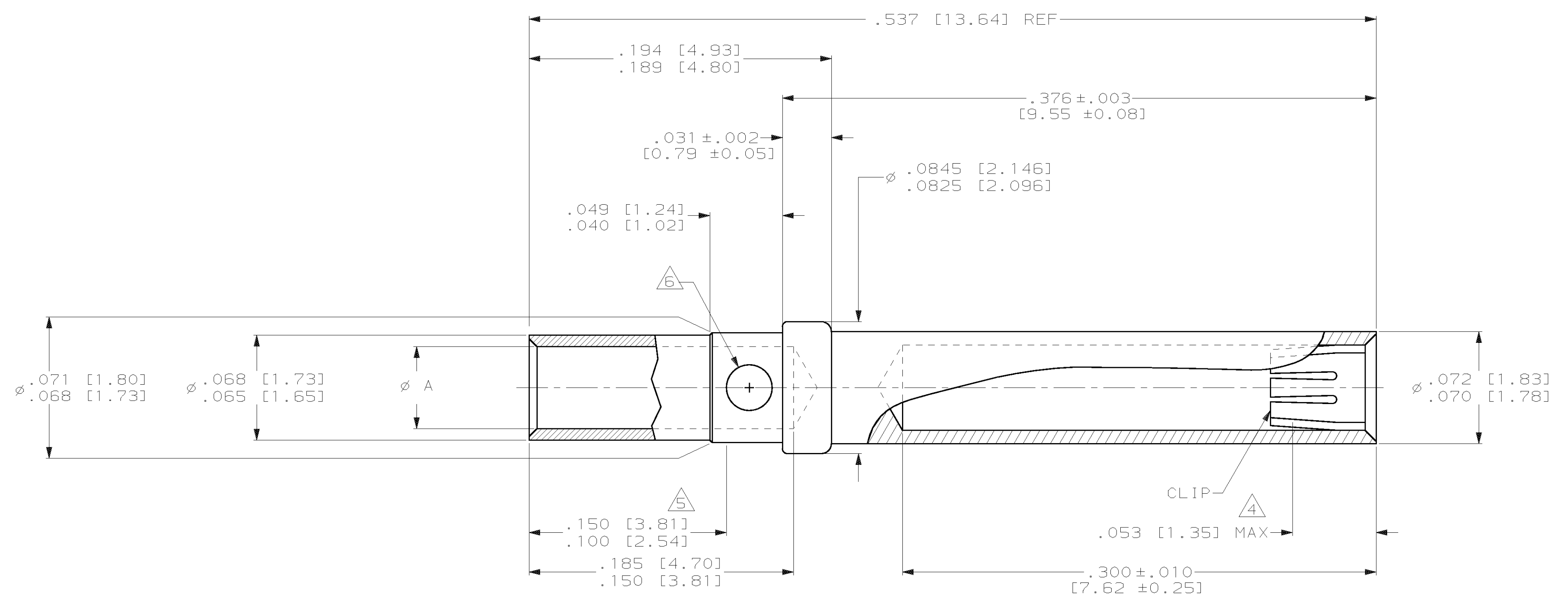


LOC		DIST		REVISIONS			
DF	DO	TR	LYR	DESCRIPTION	DATE	OWN	APVD
		C		REV PER 063D-0471-02	6-02	CT	JM



1218267-2 & -4
SCALE 2:1

- △ MATERIAL:
BODY: COPPER ALLOY
CLIP: BERYLLIUM COPPER ASTM B 194,
OR AMP ENGINEERING APPROVED EQUIVALENT.
- △ FINISH:
BODY: GOLD PLATE .000010 [0.25µm] MIN THICK ON CONTACT BODY,
OVER NICKEL PLATE .000050 [1.27µm] MIN THICK.
CLIP: GOLD PLATE .000050 [1.27µm] MIN THICK
OVER NICKEL PLATE .000100 [2.54µm] MIN THICK.
- 3. ALL DIMENSIONS SHOWN AFTER PLATING.
- △ POINT WHICH A .039 DIAMETER SQUARE ENDED PIN FIRST
ENGAGES CLIP TINES.
- △ POINT OF PLATING THICKNESS MEASUREMENT.
- △ INSPECTION HOLE THRU ONE WALL ONLY
RADIAL LOCATION OPTIONAL.



TAPE MOUNTED 20-24 AWG WIRE	.043-.046 [1.09-1.17]	△	△	1218267-4
LOOSE PIECE 20-24 AWG WIRE	.043-.046 [1.09-1.17]	△	△	1218267-3
TAPE MOUNTED 18 AWG WIRE	.051-.053 [1.30-1.35]	△	△	1218267-2
LOOSE PIECE 18 AWG WIRE	.051-.053 [1.30-1.35]	△	△	1218267-1
REMARKS	DIM A	FINISH	MATERIAL	PART NUMBER

THIS DRAWING IS A CONTROLLED DOCUMENT.

DW P BRANDBERG 08 APR 98	AMP AMP Incorporated Harrisburg, PA 17105-3608
CHK G. GRIFFITH 04 DEC 98	
APVD G. GRIFFITH 04 DEC 98	NAME: CONTACT, SOCKET, CRIMP TYPE, AMPLIMITE
PRODUCT SPEC	SIZE: A1
APPLICATION SPEC	SCALE: 20:1
WEIGHT	DRAWING NO: 100779
SEE TABLE	CUSTOMER DRAWING

SCALE 20:1 SHEET 1 OF 1 REV C