

9926 Series Branch Rated Circuit Breakers—AC Version

Circuit Breakers Hydraulic Magnetic Type

- Single pole and double pole versions
- 120/240 VAC, 50/60 Hz
- Up to 25A
- Just 13 mm wide
- Mounts on 35mm DIN-rail
- UL 489 listed, CSA C22.2 No. 5-02, CE
- VDE

9926 Series Single Pole



9926 Series Double Pole



Ordering Data	

Technical Data	
Voltage	120/240 VAC, 50/60Hz
Current	
minimum	0.5A
maximum	25A
Interrupting capacity	10,000A
Dielectric strength	1500V, 50/60Hz
Insulation resistance	100MΩ
Operating life	10000 mechanical operations
Operating temperature	-40...+65°C
Wire size*	
0.5-15A:	14AWG min., 10AWG max.
20-25A:	10AWG min.
Torque	20 in.-lb

Approval
UL 489 listed, CSA C22.2 No. 5-02, CE, VDE

Accessories	Part No.
Bus-bar (1 pole, insulated, 1 m)	67101904
Bus-bar (2 pole, insulated, 1 m)	67101972
Bus-bar end cap, 1 pole	67101973
Bus-bar end cap, 2 pole	67101974
Power lug, straight	67101960
Power lug, 90°	67101961
Lock-out handle	67101913

*Wire sizes: gauges specified are the minimum allowable as per CSA and UL standards.

The 9926 circuit breakers do not have provisions for marking tags. A possible solution is to cut the adhesive SchS2 tag rail to length (approximately 20 mm on a single pole unit so the current rating remains visible or approximately 30 mm on a two pole unit). The SchS2 accepts DEK, WS and ESG 8/17 marking tags. The part number for adhesive SchS2 is 172060000.

Trip Curves—Hydraulic Magnetic Type Typical time/current characteristics at 30°C

Sample trip characteristics - KM							
	125%	150%	200%	400%	600%	800%	1000%
minimum (sec)	15	8	4	0.7	0.09	0.007	0.005
maximum (sec)	300	90	28	4	1.5	0.6	0.4

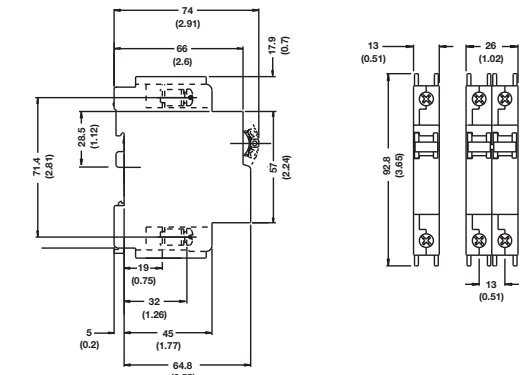
Although the 9926 series uses a magnetic only trip mechanism, CSA testing indicates a trip characteristic similar to thermal magnetic trip mechanisms. No de-rating is required at elevated temperatures.

Additional trip curves and amp ratings are available upon request.

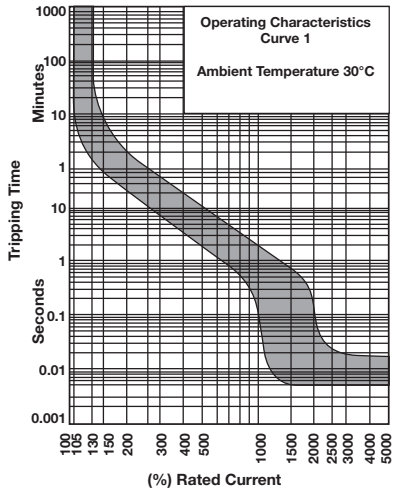
Type: Single Pole		
Current Ratings (amps)	Part No. TS 35	Description
0.5	9926251000	QL-1-13-DM-KM-0.5
1	9926251001	QL-1-13-DM-KM-01
2	9926251002	QL-1-13-DM-KM-02
3	9926251003	QL-1-13-DM-KM-03
4	9926251004	QL-1-13-DM-KM-04
5	9926251005	QL-1-13-DM-KM-05
6	9926251006	QL-1-13-DM-KM-06
7	9926251007	QL-1-13-DM-KM-07
8	9926251008	QL-1-13-DM-KM-08
10	9926251010	QL-1-13-DM-KM-10
13	9926251013	QL-1-13-DM-KM-13
15	9926251015	QL-1-13-DM-KM-15
16	9926251016	QL-1-13-DM-KM-16
20	9926251020	QL-1-13-DM-KM-20
25	9926251025	QL-1-13-DM-KM-25

Type: Double Pole		
Current Ratings (amps)	Part No. TS 35	Description
0.5	9926252000	QL-2-13-DM-KM-0.5
1	9926252001	QL-2-13-DM-KM-01
2	9926252002	QL-2-13-DM-KM-02
3	9926252003	QL-2-13-DM-KM-03
4	9926252004	QL-2-13-DM-KM-04
5	9926252005	QL-2-13-DM-KM-05
6	9926252006	QL-2-13-DM-KM-06
7	9926252007	QL-2-13-DM-KM-07
8	9926252008	QL-2-13-DM-KM-08
10	9926252010	QL-2-13-DM-KM-10
13	9926252013	QL-2-13-DM-KM-13
15	9926252015	QL-2-13-DM-KM-15
16	9926252016	QL-2-13-DM-KM-16
20	9926252020	QL-2-13-DM-KM-20
25	9926252025	QL-2-13-DM-KM-25

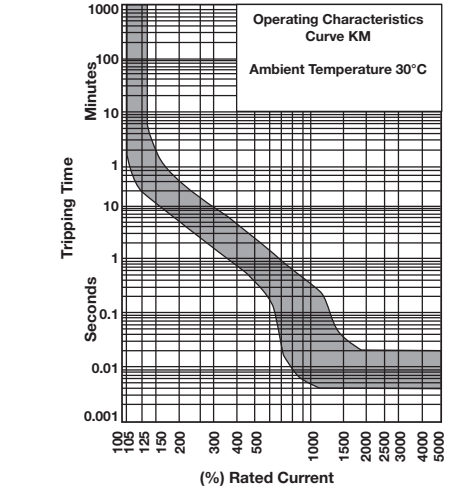
9926 Series AC Version - dimensions in mm (in.)



9926 Series—AC version Trip Curve



9926 Series—AC version Trip Curve



Trip Curve 1 applies to the following part numbers where "XX" is the current rating:
Single Pole— 99262512XX Double Pole— 99262522XX

9926 Series Branch Rated Circuit Breakers-AC Version with Contacts

Circuit Breakers with Auxiliary switch, Trip alarm, Combination of both

- AC voltages (120/240V)
- Single and double pole versions
- UL 489 and CSA listed
- Factory fitted auxiliary or trip alarm
- Compact 6.5mm width
- Attached to right hand side of circuit breaker

9926 Series Single Pole w/ Auxiliary Contact



9926 Series Single Pole Trip (Alarm Contact)



9926 Series Single Pole Combination (Auxiliary & Alarm Contact)



Technical Data	
Voltage	120/240 VAC, 50/60Hz
Current	
minimum	0.5A
maximum	25A
Interrupting capacity	10,000A
Dielectric strength	1500V, 50/60Hz
Insulation resistance	100MΩ
Operating life	10000 mechanical operations
Operating temperature	-40...+65°C
Wire size*	
0.5-15A:	14AWG min., 10AWG max.
20-25A:	10AWG min.
Torque	20 in.-lb
Approval	
UL 489 listed, CSA C22.2 No. 5-02, CE, VDE	

*Wire sizes: gauges specified are the minimum allowable as per CSA and UL standards.

The 9926 circuit breakers do not have provisions for marking tags. A possible solution is to cut the adhesive SchS2 tag rail to length (approximately 20 mm on a single pole unit so the current rating remains visible or approximately 30 mm on a two pole unit). The SchS2 accepts DEK, WS and ESG 8/17 marking tags. The part number for adhesive SchS2 is 172060000.

Type: Single Pole Aux			
Current Ratings (amps)	Part No.	Description	
1	9926261001	QL-A-1-13-DM-KM-1	
2	9926261002	QL-A-1-13-DM-KM-2	
5	9926261005	QL-A-1-13-DM-KM-5	
10	9926261010	QL-A-1-13-DM-KM-10	
15	9926261015	QL-A-1-13-DM-KM-15	
20	9926261020	QL-A-1-13-DM-KM-20	
25	9926261025	QL-A-1-13-DM-KM-25	

Type: Single Pole Trip			
Current Ratings (amps)	Part No.	Description	
1	9926271001	QL-T-1-13-DM-KM-1	
2	9926271002	QL-T-1-13-DM-KM-2	
5	9926271005	QL-T-1-13-DM-KM-5	
10	9926271010	QL-T-1-13-DM-KM-10	
15	9926271015	QL-T-1-13-DM-KM-15	
20	9926271020	QL-T-1-13-DM-KM-20	
25	9926271025	QL-T-1-13-DM-KM-25	

Type: Single Pole Combo			
Current Ratings (amps)	Part No.	Description	
1	9926281001	QL-AT-1-13-DM-KM-1	
2	9926281002	QL-AT-1-13-DM-KM-2	
5	9926281005	QL-AT-1-13-DM-KM-5	
10	9926281010	QL-AT-1-13-DM-KM-10	
15	9926281015	QL-AT-1-13-DM-KM-15	
20	9926281020	QL-AT-1-13-DM-KM-20	
25	9926281025	QL-AT-1-13-DM-KM-25	

9926 Series Double Pole w/ Auxiliary Contact



9926 Series Double Pole Trip (Alarm Contact)



9926 Series Double Pole Combination (Auxiliary & Alarm Contact)



Type: Double Pole Aux			
Current Ratings (amps)	Part No.	Description	
1	9926262001	QL-A-2-13-DM-KM-1	
2	9926262002	QL-A-2-13-DM-KM-2	
5	9926262005	QL-A-2-13-DM-KM-5	
10	9926262010	QL-A-2-13-DM-KM-10	
15	9926262015	QL-A-2-13-DM-KM-15	
20	9926262020	QL-A-2-13-DM-KM-20	
25	9926262025	QL-A-2-13-DM-KM-25	

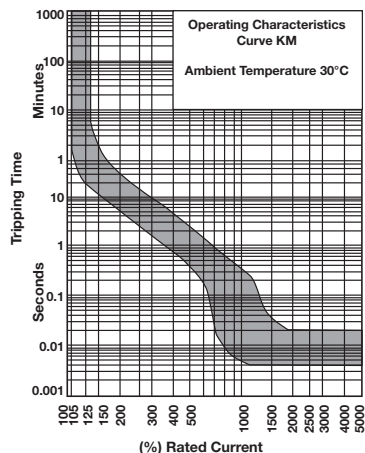
Type: Double Pole Trip			
Current Ratings (amps)	Part No.	Description	
1	9926272001	QL-T-2-13-DM-KM-1	
2	9926272002	QL-T-2-13-DM-KM-2	
5	9926272005	QL-T-2-13-DM-KM-5	
10	9926272010	QL-T-2-13-DM-KM-10	
15	9926272015	QL-T-2-13-DM-KM-15	
20	9926272020	QL-T-2-13-DM-KM-20	
25	9926272025	QL-T-2-13-DM-KM-25	

Type: Double Pole Combo			
Current Ratings (amps)	Part No.	Description	
1	9926282001	QL-AT-2-13-DM-KM-1	
2	9926282002	QL-AT-2-13-DM-KM-2	
5	9926282005	QL-AT-2-13-DM-KM-5	
10	9926282010	QL-AT-2-13-DM-KM-10	
15	9926282015	QL-AT-2-13-DM-KM-15	
20	9926282020	QL-AT-2-13-DM-KM-20	
25	9926282025	QL-AT-2-13-DM-KM-25	

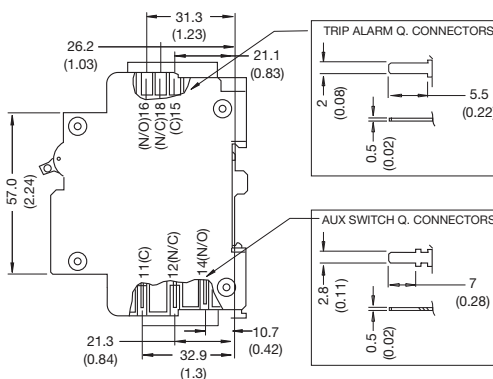
9926 Series-AC version Trip Curve

Trip Curves—Hydraulic Magnetic Type Typical time/current characteristics at 30°C

Additional trip curves and amp ratings are available upon request.



Dual Mount Dimensions in mm (in.)



9926 Series Branch Rated Circuit Breakers—DC Version

Circuit Breakers Hydraulic Magnetic Type

- Single pole versions only
- U2 trip curve for general purpose applications
- 80 and 125 VDC
- Up to 60A
- Just 13 mm wide
- Mounts on 35mm DIN-rail
- UL 489A listed
- VDE

9926 Series Single Pole (80 VDC)



9926 Series Single Pole (125 VDC)



Ordering Data

Type: Single Pole (80 VDC)			
Current Ratings (amps)	Part No.	Description	
0.5	9926251900	QY-1-13-DM-U2-0.5	
1	9926251901	QY-1-13-DM-U2-01	
2	9926251902	QY-1-13-DM-U2-02	
3	9926251903	QY-1-13-DM-U2-03	
4	9926251904	QY-1-13-DM-U2-04	
5	9926251905	QY-1-13-DM-U2-05	
10	9926251910	QY-1-13-DM-U2-10	
15	9926251915	QY-1-13-DM-U2-15	
20	9926251920	QY-1-13-DM-U2-20	
25	9926251925	QY-1-13-DM-U2-25	
30	9926251930	QY-1-13-DM-U2-30	
35	9926251935	QY-1-13-DM-U2-35	
40	9926251940	QY-1-13-DM-U2-40	
45	9926251945	QY-1-13-DM-U2-45	
50	9926251950	QY-1-13-DM-U2-50	
60	9926251960	QY-1-13-DM-U2-60	

Type: Single Pole (125 VDC)			
Current Ratings (amps)	Part No.	Description	
1	9926251801	QY-1-13-DM-U2-01-B1	
2	9926251802	QY-1-13-DM-U2-02-B1	
3	9926251803	QY-1-13-DM-U2-03-B1	
4	9926251804	QY-1-13-DM-U2-04-B1	
5	9926251805	QY-1-13-DM-U2-05-B1	
10	9926251810	QY-1-13-DM-U2-10-B1	
15	9926251815	QY-1-13-DM-U2-15-B1	
20	9926251820	QY-1-13-DM-U2-20-B1	
25	9926251825	QY-1-13-DM-U2-25-B1	
30	9926251830	QY-1-13-DM-U2-30-B1	
35	9926251835	QY-1-13-DM-U2-35-B1	
40	9926251840	QY-1-13-DM-U2-40-B1	
45	9926251845	QY-1-13-DM-U2-45-B1	
50	9926251850	QY-1-13-DM-U2-50-B1	
60	9926251860	QY-1-13-DM-U2-60-B1	

Accessories

Type	Part No.
Bus-bar (1 pole, insulated 1m)	67101904
Bus bar end cap, 1 pole	67101973
Power lug, straight	67101960
Power lug, 90°	67101961
Lock-out handle	67101913

Technical Data	
Voltage	80,125 VDC
Current	
minimum	0.5 A
maximum	60 A
Interrupting capacity	10,000 A
Dielectric strength	1500 V, 50/60 Hz
Insulation resistance	100 MΩ
Operating life	10000
mechanical operations	
Operating temperature	-40...+65°C
Wire size*	
1-15A:	14 AWG min., 10 AWG max.
20-25A:	10 AWG min.
Torque	20 in.-lb
Approval	
UL 489A Listed, CE, VDE	

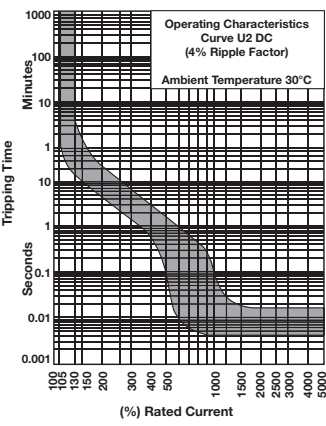
*Wire sizes: gauges specified are the minimum allowable as per CSA and UL standards.

The 9926 circuit breakers do not have provisions for marking tags. A possible solution is to cut the adhesive SchS2 tag rail to length (approximately 20 mm on a single pole unit so the current rating remains visible or approximately 30 mm on a two pole unit). The SchS2 accepts DEK, WS and ESG B/17 marking tags. The part number for adhesive SchS2 is 1720600000.

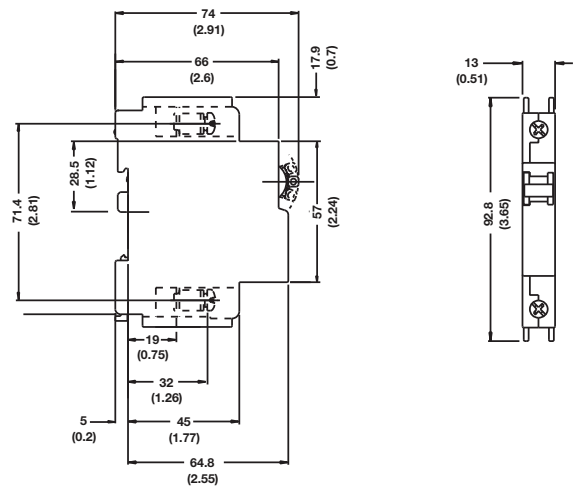
9926 Series—DC version Trip Curve

Trip Curves—Hydraulic Magnetic Type Typical time/current characteristics at 30°C

Additional trip curves and amp ratings are available upon request.



Dimensions in mm (in.)



9926 Series Supplemental Circuit Breakers

Circuit Breakers Hydraulic Magnetic Type

- AC Voltages 240/480V
- Trip curve 2 for general purpose applications
- UL 1077 recognized
- VDE, CSA, and CE Approved
- Just 13 mm wide
- Mounts to 35 mm DIN-rail
- Factory fitted auxiliary or trip alarm
- Single, double and triple pole versions

9926 Series Single Pole



9926 Series Double Pole



9926 Series Triple Pole



Ordering Data

Type: Single Pole		
Current Rating (amps)	Part No.	Description
1	9926251501	QZ-1-13-D-2-01
2	9926251502	QZ-1-13-D-2-02
3	9926251503	QZ-1-13-D-2-03
4	9926251504	QZ-1-13-D-2-04
5	9926251505	QZ-1-13-D-2-05
6	9926251506	QZ-1-13-D-2-06
8	9926251508	QZ-1-13-D-2-08
10	9926251510	QZ-1-13-D-2-10
15	9926251515	QZ-1-13-D-2-15
20	9926251520	QZ-1-13-D-2-20
25	9926251525	QZ-1-13-D-2-25
35	9926251535	QZ-1-13-D-2-35
40	9926251540	QZ-1-13-D-2-40
50	9926251550	QZ-1-13-D-2-50
60	9926251560	QZ-1-13-D-2-60

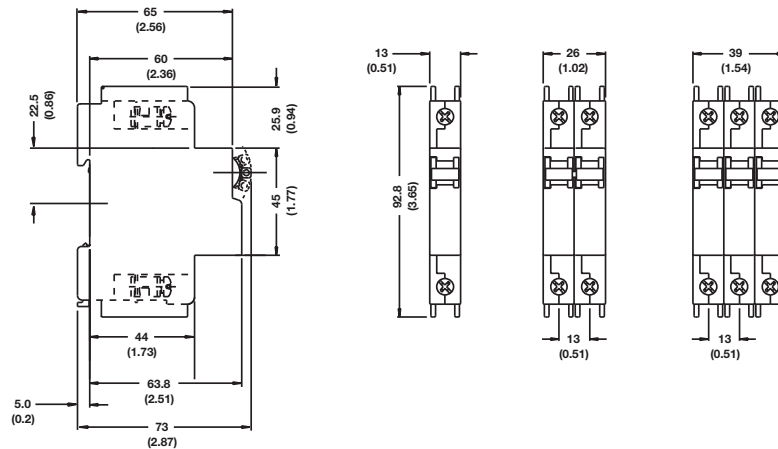
Type: Double Pole		
Current Rating (amps)	Part No.	Description
1	9926252501	QZ-2-13-D-2-01
2	9926252502	QZ-2-13-D-2-02
4	9926252504	QZ-2-13-D-2-04
5	9926252505	QZ-2-13-D-2-05
6	9926252506	QZ-2-13-D-2-06
10	9926252510	QZ-2-13-D-2-10
15	9926252515	QZ-2-13-D-2-15
20	9926252520	QZ-2-13-D-2-20
25	9926252525	QZ-2-13-D-2-25
30	9926252530	QZ-2-13-D-2-30
35	9926252535	QZ-2-13-D-2-35
40	9926252540	QZ-2-13-D-2-40
50	9926252550	QZ-2-13-D-2-50
60	9926252560	QZ-2-13-D-2-60

Type: Triple Pole		
Current Rating (amps)	Part No.	Description
10	9926253510	QZ-3-13-D-2-10
15	9926253515	QZ-3-13-D-2-15
20	9926253520	QZ-3-13-D-2-20
25	9926253525	QZ-3-13-D-2-25
30	9926253530	QZ-3-13-D-2-30
40	9926253540	QZ-3-13-D-2-40
50	9926253550	QZ-3-13-D-2-50
60	9926253560	QZ-3-13-D-2-60

Accessories

Type	Part No.
Bus bar (1 pole, insulated 1m)	67101904
Bus bar (2 pole, insulated 1m)	67101972
Bus bar (3 pole, insulated 1m)	67101971
Bus bar end cap, 1 pole	67101973
Bus bar end cap, 2 pole or 3 pole	67101974
Power lug, straight	67101960
Power lug, 90°	67101961
Lock-out handle	67101913

9926 Series Supplemental – dimensions in mm (in.)



Technical Data

Voltage	277/480 VAC @ 50/60 Hz
Current	
minimum	0.5 A
maximum	60 A
Interrupting capacity	5 kA @ 277/480 V, 5 kA @ 120 V, 5 kA @ 240 V
Dielectric strength	1500 V, 50/60 Hz
Insulation resistance	100 MΩ
Operating life	10000 mechanical operations
Operating temperature	-40...+65°C
Wire size*	
1-15A:	14 AWG min., 10 AWG max.
20-25A:	10 AWG min.
Torque	20 in.-lb

Approval

UL 1077 Recognized, VDE (EN 60947-2), CSA C22.2 No. 235, CE Approved

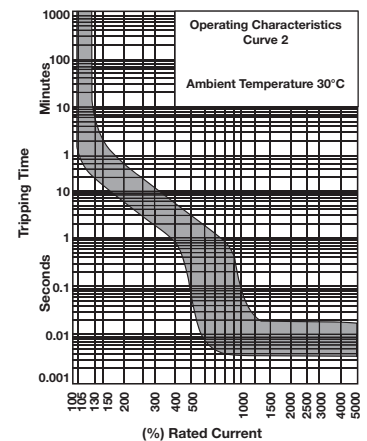
*Wire sizes: gauges specified are the minimum allowable as per CSA and UL standards.

The 9926 circuit breakers do not have provisions for marking tags. A possible solution is to cut the adhesive SchS2 tag rail to length (approximately 20 mm on a single pole unit so the current rating remains visible or approximately 30 mm on a two pole unit). The SchS2 accepts DEK, WS and ESG 8/17 marking tags. The part number for adhesive SchS2 is 172060000.

9926 Series—Supplemental Trip Curve

Trip Curves—Hydraulic Magnetic Type Typical time/current characteristics at 30°C

Additional trip curves and amp ratings are available upon request.



9926 Series Supplemental Circuit Breakers with Contacts

Circuit Breakers Auxiliary switch, Trip alarm, Combination of both

- AC Voltages 240/480V
- Trip curve 2 for general purpose applications
- UL 1077 recognized
- VDE, CSA, and CE Approved
- Just 13 mm wide
- Mounts to 35 mm DIN-rail
- Factory fitted auxiliary or trip alarm
- Single, double and triple pole versions

Technical Data

Voltage	277/480 VAC @ 50/60 Hz
Current	
minimum	0.5 A
maximum	60 A
Interrupting capacity	5 kA @ 277/480 V, 5 kA @ 120 V, 5 kA @ 240 V
Dielectric strength	1500 V, 50/60 Hz
Insulation resistance	100 MΩ
Operating life	10000 mechanical operations
Operating temperature	-40...+65°C
Wire size*	
1-15A:	14 AWG min., 10 AWG max.
20-25A:	10 AWG min.
Torque	20 in.-lb

Approval

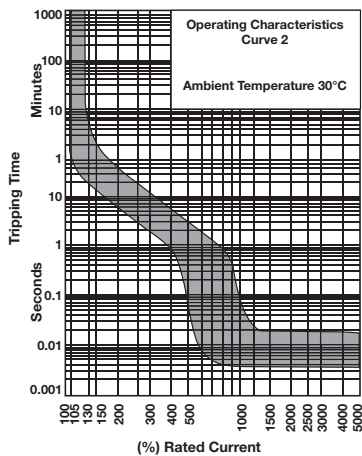
UL 1077 Recognized, VDE (EN 60947-2),
CSA C22.2 No. 235, CE Approved

*Wire sizes: gauges specified are the minimum allowable as per CSA and UL standards.

The 9926 circuit breakers do not have provisions for marking tags. A possible solution is to cut the adhesive SchS2 tag rail to length (approximately 20 mm on a single pole unit so the current rating remains visible or approximately 30 mm on a two pole unit). The SchS2 accepts DEK, WS and ESG B/17 marking tags. The part number for adhesive SchS2 is 1720600000.

9926 Series—Supplemental Trip Curve

Trip Curves—Hydraulic Magnetic Type Typical time/current characteristics at 30°C



9926 Series Single Pole w/ Auxiliary Contact



Type: Single Pole Aux

Current Ratings (amps)	Part No.	Description
1	9926261501	QZ-A-1-13-D-2-01
2	9926261502	QZ-A-1-13-D-2-02
5	9926261505	QZ-A-1-13-D-2-05
10	9926261510	QZ-A-1-13-D-2-10
15	9926261515	QZ-A-1-13-D-2-15
20	9926261520	QZ-A-1-13-D-2-20
25	9926261525	QZ-A-1-13-D-2-25

9926 Series Double Pole w/ Auxiliary Contact



Type: Double Pole Aux

Current Ratings (amps)	Part No.	Description
1	9926262501	QZ-A-2-13-D-2-01
2	9926262502	QZ-A-2-13-D-2-02
5	9926262505	QZ-A-2-13-D-2-05
10	9926262510	QZ-A-2-13-D-2-10
15	9926262515	QZ-A-2-13-D-2-15
20	9926262520	QZ-A-2-13-D-2-20
25	9926262525	QZ-A-2-13-D-2-25

9926 Series Triple Pole w/ Auxiliary Contact



Type: Triple Pole Aux

Current Ratings (amps)	Part No.	Description
1	9926263501	QZ-A-3-13-D-2-01
2	9926263502	QZ-A-3-13-D-2-02
5	9926263505	QZ-A-3-13-D-2-05
10	9926263510	QZ-A-3-13-D-2-10
15	9926263515	QZ-A-3-13-D-2-15
20	9926263520	QZ-A-3-13-D-2-20
25	9926263525	QZ-A-3-13-D-2-25

9926 Series Single Pole Trip (Alarm Contact)



Type: Single Pole Trip

Current Ratings (amps)	Part No.	Description
1	9926271501	QZ-T-1-13-D-2-01
2	9926271502	QZ-T-1-13-D-2-02
5	9926271505	QZ-T-1-13-D-2-05
10	9926271510	QZ-T-1-13-D-2-10
15	9926271515	QZ-T-1-13-D-2-15
20	9926271520	QZ-T-1-13-D-2-20
25	9926271525	QZ-T-1-13-D-2-25

9926 Series Double Pole Trip (Alarm Contact)



Type: Double Pole Trip

Current Ratings (amps)	Part No.	Description
1	9926272501	QZ-T-2-13-D-2-01
2	9926272502	QZ-T-2-13-D-2-02
5	9926272505	QZ-T-2-13-D-2-05
10	9926272510	QZ-T-2-13-D-2-10
15	9926272515	QZ-T-2-13-D-2-15
20	9926272520	QZ-T-2-13-D-2-20
25	9926272525	QZ-T-2-13-D-2-25

9926 Series Triple Pole Trip (Alarm Contact)



Type: Triple Pole Trip

Current Ratings (amps)	Part No.	Description
1	9926273501	QZ-T-3-13-D-2-01
2	9926273502	QZ-T-3-13-D-2-02
5	9926273505	QZ-T-3-13-D-2-05
10	9926273510	QZ-T-3-13-D-2-10
15	9926273515	QZ-T-3-13-D-2-15
20	9926273520	QZ-T-3-13-D-2-20
25	9926273525	QZ-T-3-13-D-2-25

9926 Series Single Pole Combination (Auxiliary & Alarm Contact)



Type: Single Pole Combo

Current Ratings (amps)	Part No.	Description
1	9926281501	QZ-AT-1-13-D-2-01
2	9926281502	QZ-AT-1-13-D-2-02
5	9926281505	QZ-AT-1-13-D-2-05
10	9926281510	QZ-AT-1-13-D-2-10
15	9926281515	QZ-AT-1-13-D-2-15
20	9926281520	QZ-AT-1-13-D-2-20
25	9926281525	QZ-AT-1-13-D-2-25

9926 Series Double Pole Combination (Auxiliary & Alarm Contact)



Type: Double Pole Combo

Current Ratings (amps)	Part No.	Description
1	9926282501	QZ-AT-2-13-D-2-01
2	9926282502	QZ-AT-2-13-D-2-02
5	9926282505	QZ-AT-2-13-D-2-05
10	9926282510	QZ-AT-2-13-D-2-10
15	9926282515	QZ-AT-2-13-D-2-15
20	9926282520	QZ-AT-2-13-D-2-20
25	9926282525	QZ-AT-2-13-D-2-25

9926 Series Triple Pole Combination (Auxiliary & Alarm Contact)



Type: Triple Pole Combo

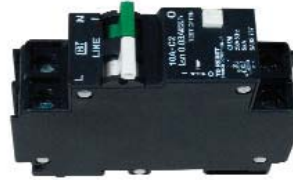
Current Ratings (amps)	Part No.	Description
1	9926283501	QZ-AT-3-13-D-2-01
2	9926283502	QZ-AT-3-13-D-2-02
5	9926283505	QZ-AT-3-13-D-2-05
10	9926283510	QZ-AT-3-13-D-2-10
15	9926283515	QZ-AT-3-13-D-2-15
20	9926283520	QZ-AT-3-13-D-2-20
25	9926283525	QZ-AT-3-13-D-2-25

9926 Series Supplemental Circuit Breakers–GFCI

Ground Fault Current Interrupt

- CE approved
- UL1077 and UL1053 recognized
- Small frame size (26mm wide)
- Single pole plus switched neutral earth leakage protection
- Trip point is unaffected by ambient temperature
- Current ratings up to 50A
- Trip indication (mid trip handle position)
- Trip curve 2 for general purpose applications

9926 Series GFCI



Ordering Data

Technical Data

Standard Ampere Ratings (A)	5 to 50A
Sensitivity (mA)	30 (CE) / 22 (UL)
Number of Poles	1 + N
Equipment Type	Earth Leakage/GFCI
Rated Voltage (V)	230 (CE) / 240 (UL)
Rated Interrupting/	5 kA
Withstand Capacity (kA)	-
Weight (kg)	0.26
Trip Curve (standard)	2
Operating Temperature	-40 to +65°C

Approval

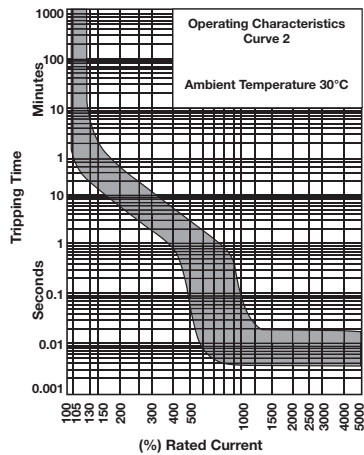
UL 1077 and UL 1053, CE

Type: Single Pole GFCI

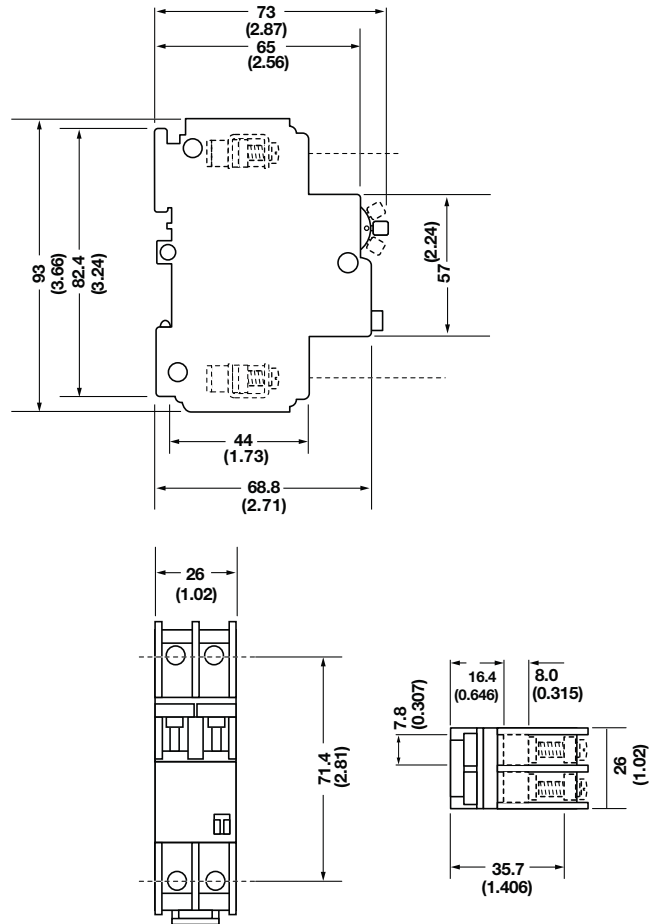
Current Ratings (amps)	Part No.	Description
5	9926291105	QF17A2505 - CB W/GFI
10	9926291110	QF17A2510 - CB W/GFI
15	9926291115	QF17A2515 - CB W/GFI
20	9926291120	QF17A2520 - CB W/GFI
25	9926291125	QF17A2525 - CB W/GFI
30	9926291130	QF17A2530 - CB W/GFI
50	9926291150	QF17A2550 - CB W/GFI

9926 Series–AC version Trip Curve

Trip Curves—Hydraulic Magnetic Type Typical time/current characteristics at 30°C



9926 Series GFCI – dimensions in mm (in.)

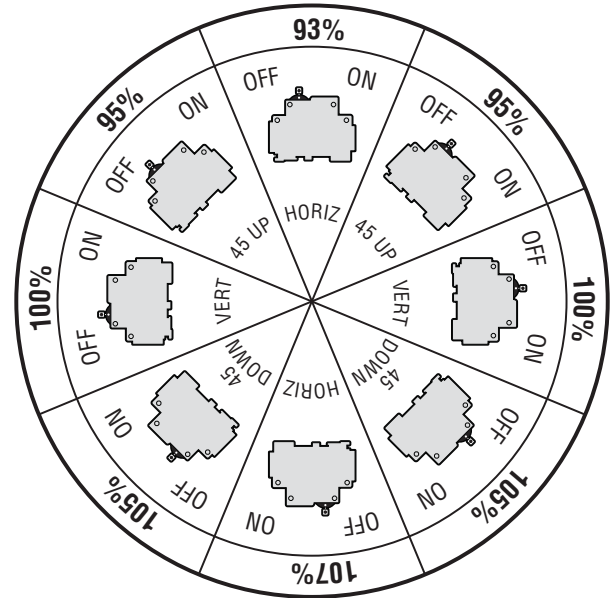


9926 Series Mounting Options and Accessories

Mounting Options

If the product is not vertically mounted in the normal DIN-rail mounting orientation, a rating factor must be applied. Figure 1 shows a diagram of the rating factor to apply. The published curves for these circuit breaker products are produced with the circuit breaker in the vertical mounting position. The rating factor only applies to the must hold and must trip points of the curve as the other parts (instantaneous trip point) stay largely unaffected.

It is important to note that in environments that are exposed to a high degree of vibration, the cables that connect to the circuit breaker must be securely held in place, as the breaker is not designed to carry the weight of the cables. A maximum of 35N can be applied to the terminal area, in a direction perpendicular to the mounting axis.

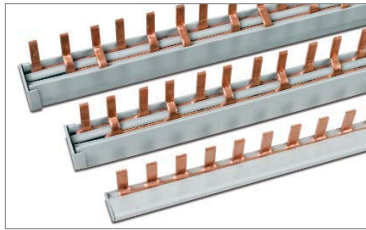


Accessories

Technical Data

Current Rating	80A max.
Voltage	500V max.
Short Circuit Strength	25kA

Type	Part No.
Bus bar (1 pole, insulated 1m)	67101904
Bus bar (2 pole, insulated 1m)	67101972
Bus bar (3 pole, insulated 1m)	67101971



Part Number Table - Example

To order 9926 Series Single Pole Circuit Breaker
Part No. 9926251000

- Current Rating of 1.0 amp
- Internal Resistance per Pole of 1.1 ohms
- Trip Curve – M1, Medium (Standard)

9 9 2 6 2 5 1 0 0 0

Amperage

- *00* - 0.5A
- *01* - 1A
- *02* - 2A
- /
- *60* - 60A

Trip Curves

- *0* - Branch AC KM (Standard)
- *1* - Branch AC OP (Instantaneous)
- *2* - Branch AC 1 (Fast)
- *4* - Branch 80VDC 1 (Fast)
- *5* - Supplemental 2 (Standard)
- *6* - Branch 125VDC OP (Instantaneous)
- *7* - Branch 80VDC OP (Instantaneous)
- *8* - Branch 125VDC U2 (Standard)
- *9* - Branch 80VDC U2 (Standard)

Poles

- 1 Pole
- 2 Pole
- 3 Pole

Type

- *5* - Base Breaker
- *6* - With Auxiliary Contact
- *7* - With Trip Alarm Contact
- *8* - Combo Aux/Trip Contact
- *9* - GFCI

Type	Part No.
Bus bar end cap, 1 pole	67101973
Bus bar end cap, 2 pole or 3 pole	67101974



Technical Data

Current Rating	85A max.
Wire Size	10 AWG min., 4 AWG max.
Dimensions	A: 6 mm B: 32 mm

Type	Part No.
Power lug, straight	67101960
Power lug, 90°	67101961



Type	Part No.
Lock-out handle	67101913

