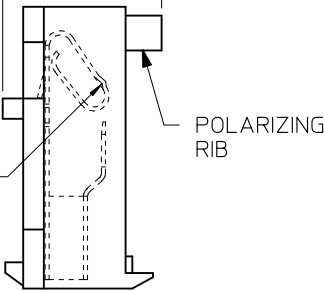


(1.02) .040 (5.08) .200 (1.78) .070

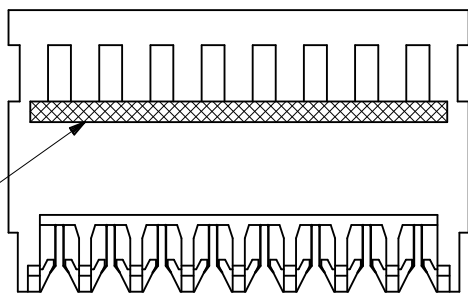
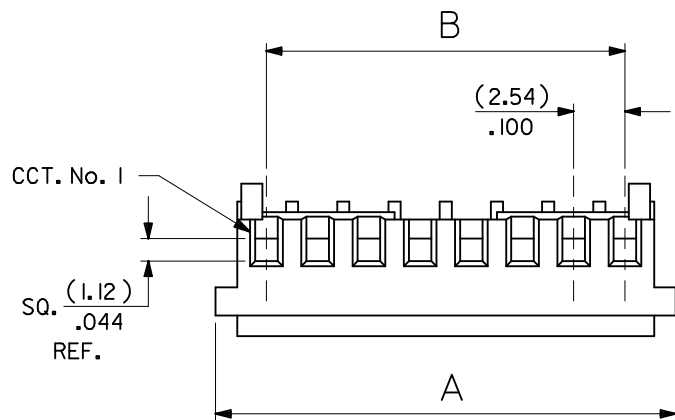


ALL TERMINALS HAVE CAT EAR CONFIGURATION

POLARIZING RIB

BASE No. A-7720S \* N \* \*  
 VOID LOC' n.  
 TERMINAL DESIGNATION  
 No. OF CCTS.  
**HOUSING CONFIGURATION**

WITHOUT BACKWALL (FEED-THRU HOUSING) C. WITH RAMP AND POL. RIB



SEE NOTE 8

NO OF CCTS	DIM. A	DIM. B
2	( 7.59 ) / .299	( 2.54 ) / .100
3	( 10.13 ) / .399	( 5.08 ) / .200
4	( 12.67 ) / .499	( 7.62 ) / .300
5	( 15.21 ) / .599	( 10.16 ) / .400
6	( 17.75 ) / .699	( 12.70 ) / .500
7	( 20.29 ) / .799	( 15.24 ) / .600
8	( 22.83 ) / .899	( 17.78 ) / .700
9	( 25.37 ) / .999	( 20.32 ) / .800
10	( 27.91 ) / 1.099	( 22.86 ) / .900
11	( 30.45 ) / 1.199	( 25.40 ) / 1.000
12	( 32.99 ) / 1.299	( 27.94 ) / 1.100
13	( 35.53 ) / 1.399	( 30.48 ) / 1.200
14	( 38.07 ) / 1.499	( 33.02 ) / 1.300
15	( 40.61 ) / 1.599	( 35.56 ) / 1.400
16	( 43.15 ) / 1.699	( 38.10 ) / 1.500
17	( 45.69 ) / 1.799	( 40.64 ) / 1.600
18	( 48.23 ) / 1.899	( 43.18 ) / 1.700
19	( 50.77 ) / 1.999	( 45.72 ) / 1.800
20	( 53.31 ) / 2.099	( 48.26 ) / 1.900
21	( 55.85 ) / 2.199	( 50.80 ) / 2.000
22	( 58.39 ) / 2.299	( 53.34 ) / 2.100
23	( 60.93 ) / 2.399	( 55.88 ) / 2.200
24	( 63.47 ) / 2.499	( 58.42 ) / 2.300
25	( 66.01 ) / 2.599	( 60.96 ) / 2.400
26	( 68.55 ) / 2.699	( 63.50 ) / 2.500
27	( 71.09 ) / 2.799	( 66.04 ) / 2.600
28	( 73.63 ) / 2.899	( 68.58 ) / 2.700

NOTES:

- MATERIAL: HOUSING: NYLON 6/6, UL94V-2, COLOR: NATURAL, TERMINALS: PHOS. BRONZE
- FINISH: SEE CHARTS
- PRODUCT SPECIFICATION: PS-99020-0088
- PACKAGING: PER PK-7720-100
- VOIDS ARE AVAILABLE WITH PIN WINDOWS MOLDED CLOSED.
- THIS ASSEMBLY IS FOR USE WITH (0.64)/.025 SQ. OR ROUND PINS, INSERTION DEPTH (6.10-7.87)/.240-.310
- THIS ASSEMBLY WILL ACCOMMODATE (1.42)/.056 MAX INSULATION DIA.
- COLOR STRIPE ON FULL LENGTH OF RIB DENOTES WIRE GAUGE (SEE CHART)

TERMINAL DESIGNATION	COLOR STRIPE	FOR USE WITH WIRE SIZES:
H	GREEN	24 AWG SOLID, STRANDED TINNED, AND STRANDED TOPCOAT 26 AWG STRANDED TOPCOAT
J	BROWN	26 AWG SOLID AND STRANDED TINNED, 28 AWG SOLID, STRANDED TINNED, AND STRANDED TOPCOAT

CHANGE PLATING EC NO: UCP2011-1314 DRWN:WKIPPER 2010/11/16 CHKD:JBELL APPR:FSM/TH 2011/03/09	QUALITY SYMBOLS	GENERAL TOLERANCES (UNLESS SPECIFIED)	DIMENSION STYLE	SCALE	DESIGN UNITS	THIRD ANGLE PROJECTION														
		<table border="1"> <thead> <tr> <th></th> <th>mm</th> <th>INCH</th> </tr> </thead> <tbody> <tr> <td>4 PLACES</td> <td>± ---</td> <td>± ---</td> </tr> <tr> <td>3 PLACES</td> <td>± ---</td> <td>± .005</td> </tr> <tr> <td>2 PLACES</td> <td>± 0.13</td> <td>± .010</td> </tr> <tr> <td>1 PLACE</td> <td>± 0.25</td> <td>± ---</td> </tr> </tbody> </table>		mm	INCH	4 PLACES	± ---	± ---	3 PLACES	± ---	± .005	2 PLACES	± 0.13	± .010	1 PLACE	± 0.25	± ---	MM/IN	---	METRIC
	mm	INCH																		
4 PLACES	± ---	± ---																		
3 PLACES	± ---	± .005																		
2 PLACES	± 0.13	± .010																		
1 PLACE	± 0.25	± ---																		

DRAWN BY	DATE	TITLE
GCH	23/12/86	KK (2.54)/.100 INSULATION DISPLACEMENT CONNECTOR ASSEMBLY
CHECKED BY	DATE	
D.MORIARTY	23/12/86	
APPROVED BY	DATE	
J.DENNEHY	23/12/86	
MATERIAL NO.		
	SEE CHART	SDA-7720S-*N*
DRAFT WHERE APPLICABLE MUST REMAIN WITHIN DIMENSIONS	SIZE A3	THIS DRAWING CONTAINS INFORMATION THAT IS PROPRIETARY TO MOLEX INCORPORATED AND SHOULD NOT BE USED WITHOUT WRITTEN PERMISSION

DOCUMENT NO.	SHEET NO.
SDA-7720S-*N*	1 OF 3

PART NO.	ENG. NO.	CCTS.	TERMINAL	I.D. STRIPE	PLTG.
22-50-3025	A-7720S-C 2H	2	41512-H(154)	GREEN	(0.00254)/.000100 MIN. TIN OVER (0.00127)/.000050 MIN. NICKEL
↑ 3035	↑ C 3H	3	↑	↑	
3045	C 4H	4			
3055	C 5H	5			
3065	C 6H	6			
3075	C 7H	7			
3085	C 8H	8			
3095	C 9H	9			
3105	C 10H	10			
3115	C 11H	11			
3125	C 12H	12			
3135	C 13H	13			
3145	C 14H	14			
3155	C 15H	15			
3165	C 16H	16			
3175	C 17H	17			
3185	C 18H	18			
3195	C 19H	19			
3205	C 20H	20			
3215	C 21H	21			
3225	C 22H	22			
3235	C 23H	23			
3245	C 24H	24			
3255	C 25H	25			
3265	C 26H	26			
↓ 3275	↓ C 27H	27	↓	↓	
22-50-3285	A-7720S-C28H	28	41512-H(154)	GREEN	

**NOTE:**

1. 18 - 28 CIRCUITS ARE NON-STANDARD.

CHANGE PLATING EC NO: UCP2011-1314 DRWN:WK/PPER 2010/11/16 CHKD:JBELL APPR:FSM/TH 2011/03/09	QUALITY SYMBOLS	GENERAL TOLERANCES (UNLESS SPECIFIED)	DIMENSION STYLE	SCALE	DESIGN UNITS	THIRD ANGLE PROJECTION	
	▼=0 □=0	mm INCH	MM/IN	---	METRIC		
		4 PLACES ± --- ± ---	DRAWN BY DATE	TITLE			
		3 PLACES ± --- ± ---	CHECKED BY DATE	KK (2.54)/.100 INSULATION DISPLACEMENT CONNECTOR ASSEMBLY			
	2 PLACES ± --- ± ---	APPROVED BY DATE	MOLEX INCORPORATED DOCUMENT NO.				
	1 PLACE ± --- ± ---	ANGULAR ± ---°	SEE CHART SDA-7720S-*N* SHEET NO.				
		DRAFT WHERE APPLICABLE MUST REMAIN WITHIN DIMENSIONS	THIS DRAWING CONTAINS INFORMATION THAT IS PROPRIETARY TO MOLEX INCORPORATED AND SHOULD NOT BE USED WITHOUT WRITTEN PERMISSION				