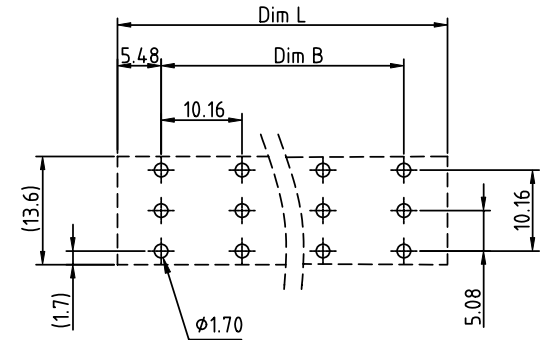
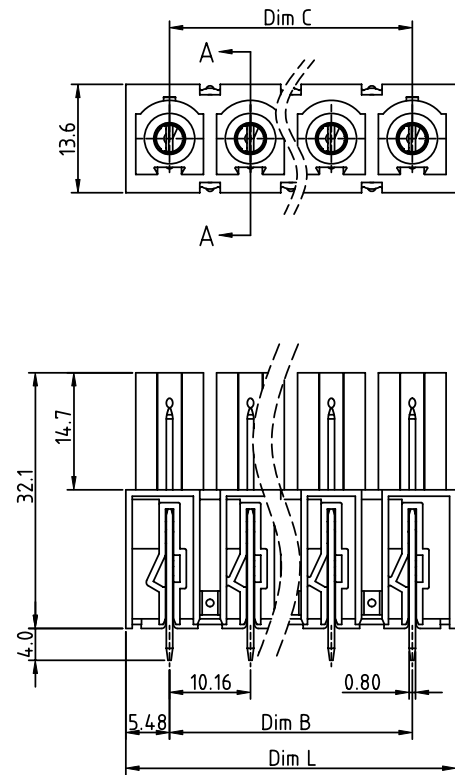


PRODUCT NUMBER	PITCH
KLxx61x000J0G	10.16 mm



RECOMMENDED P.C.B LAYOUT  
TOP VIEW

Material:

- Item (a) Terminal(housing): Thermoplastic(UL94-V0)
- Item (b) Pin: Copper Tin plated
- Item (c) Wire guard: Stainless Steel

Electrical: cULus

- Voltage rating:300V
- Current rating:55A
- Withstanding Voltage:1.6 KV
- Operating temperature:-40°C to +115°C
- Soldering temperature:260°C±5°C/5 Sec
- Safety Approval:

DIMENSION

Dim L	$N \times 10.16 \pm 0.8$
Dim B	$(N-1) \times 10.16$
Dim C	$(N-1) \times 10.16$

N=Number of poles

Poles	Tolerance
2p-6p	±0.25
7p-12p	±0.35

PART NO.: KL xx 61 x 0 00J0 G

Solid block	0	Color	0 Black (RAL9005)	RoHS compliant	(lead<4%)
No. of poles	2		2 Red (RAL3001/D)	In copper Alloy	
02 2poles	3		3 Orange(RAL2011/P)		
03 3poles	4		4 Yellow(RAL1018/A)		
...	...		5 Green(RAL6018/T)		
12 12poles	6		6 Blue (RAL5015/A)		
	8		8 Grey(RAL7035/D)		
	9		9 White(RAL1102)		
	C		Green(RAL6018/U)		

mat'l. code		surface ASME Y14.5	tolerance ASME Y14.5	projection	product family
ltr ecn no dr date		tolerances unless otherwise specified			TERMINAL BLOCK
angles		$X \pm 0.5$	$X.X \pm 0.3$	MM	title
$X^{\circ} \pm 1^{\circ}$		$X.XX \pm 0.1$		scale	TERMINAL BLOCK PLUGGABLE PCB PLUG, VERTICAL
dr		EVIN ZHONG	050314		dwg no
enrg		EVIN ZHONG	050314		sheet 1 of 1
chr		HANKE FENG	050314		size
appd		SHI JUN	050314		A4
sheet index	revision sheet	A	1	type	CUSTOMER Drawing