

mot'l. code	tolerances unless otherwise specified		CUSTOMER COPY	title
lir	ecn no	dr	dtte	linear
H	T09-1076	S.Lin	06/02/09	.XX ± 0.30
B	T09-1073	S.Lin	10/20/06	.XXX ± 0.20
C	T07-1053	S.Lin	04/25/07	° ± 2°
D	T08-1013	S.Lin	01/23/08	dr
E	T08-1111	S.Lin	06/19/08	engr
F	T08-1165	S.Lin	09/17/08	Chr
G	T09-1061	S.Lin	04/30/09	oppd
sheet index	revision	H	H	scale
1	1	2		NA
				product family
				SATA
				product size
				A4
				product size
				10035691
				code
				TWN
				sheet
				1 of

1 2

ACAD

3

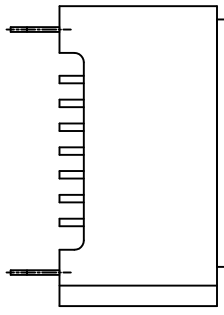
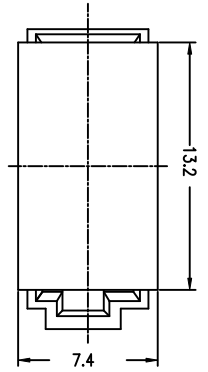
cage code

4

1 2

3

4



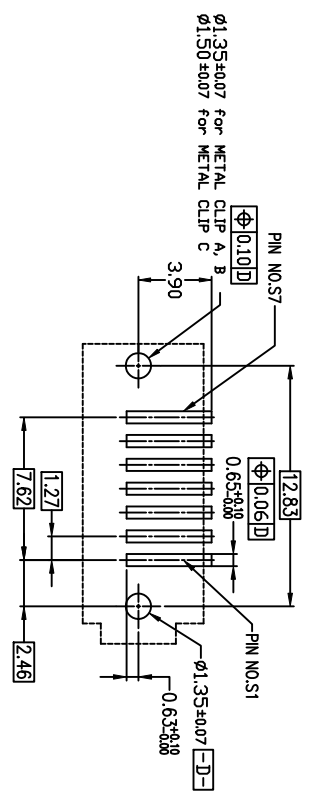
PRODUCT WITH CAP FOR T & R PACKING

6. PRODUCT NUMBERING:

10035691-X X X X

BLANK: Plating Tin/Lead  
LF: Plating Lead Free

- 2: Metal clip A with Tin at Solder Tail
- 3: Metal clip B with Tin at Solder Tail
- 4: Metal Clip B with G/F at Solder Tail
- 5: Metal Clip C with Tin at Solder Tail
- 6: Metal Clip D with G/F at Solder Tail
- S: Metal Clip B with Tin at Solder Tail
- 5u" Gold at Contact
- 0: Tube Packing
- 1: T&R Packing
- 2: T&R WITH CAP ( NOTE 6)
- 3: TRAY WITH CAP ( NOTE 6)
- Housing Color
- 0: Black
- 1: Blue



RECOMMENDED MOUNTING LAYOUT  
RECOMMENDED PCB T = 1.60mm  
TOLERANCE UNLESS OTHERWISE : ±0.1

- NOTES :
1. MATERIAL
    - i) HOUSING : HIGH TEMPERATURE THERMOPLASTIC UL94V-0
    - ii) TERMINAL : COPPER ALLOY
    - iii) HOLD DOWN : COPPER ALLOY
  2. FINISH
    - i) TERMINAL : 15u" min Au PLATING AT CONTACT POINT  
100u" min PURE MATT TIN OR GOLD FLASH PLATING AT SOLDER TAIL WITH NICKEL UNDERPLATE
    - ii) HOLD DOWN : 100-200 u" PURE MATT TIN PLATING.
    - 3. P/N 10035691-XXXLF THE HOUSING WILL WITHSTAND EXPOSURE TO 260 DEGREE C PEAK TEMPERATURE FOR 10 SECONDS IN A REFLOW SOLDER APPLICATION WITH 1.6MM MINIMUM THICK CIRCUIT BOARD.
    - 4. Packaging spec. GS-14-840.
    - 5. Product Spec. GS-12-194.
    - 6. Product Spec. 110-634 FOR 10035691-033LF, -023LF ONLY

mot'l. code	tolerances unless otherwise specified	CUSTOMER COPY	title	product family	code
lfr	.X ± 0.30		S-ATA SIGNAL PLUG	SATA	TWN
H	.XX ± 0.20		SMT VERTICAL TYPE ASSY		sheet
B	.XXX ± 0.10				2 of
C	0° ± 2°				
D					
E					
F					
G					
sheet index					