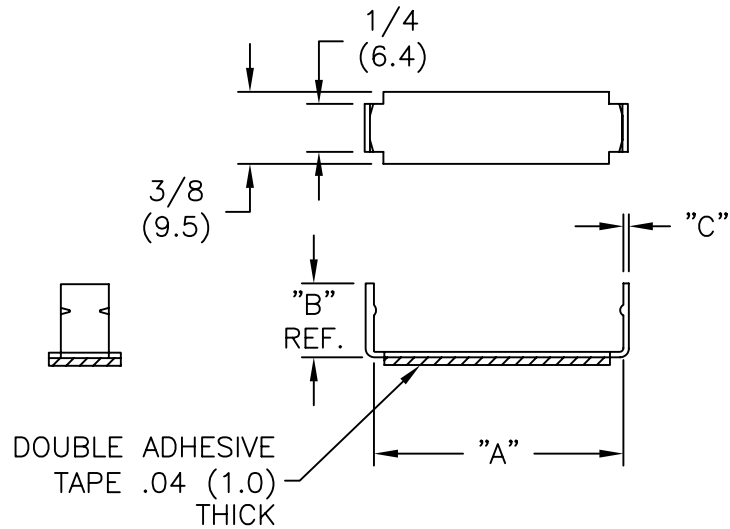


PART NO.	CABLE WIDTH "A"	DIM "B"	DIM "C"
AFCC-08	1/2 (12.7)	1/4 (6.4)	.02 (0.5)
AFCC-12	3/4 (19.1)	1/4 (6.4)	
AFCC-16	1 (25.4)	5/16 (7.9)	
AFCC-20	1-1/4 (31.8)	3/8 (9.5)	
AFCC-21	1-5/16 (33.3)	.385 (9.8)	
AFCC-24	1-1/2 (38.1)	7/16 (11.1)	
AFCC-27.5	1.715 (43.6)	.49 (12.5)	.03 (0.7)
AFCC-28	1-3/4 (44.5)	1/2 (12.7)	
AFCC-32	2 (50.8)	9/16 (14.3)	
AFCC-36	2-1/4 (57.2)	5/8 (15.9)	
AFCC-40	2-1/2 (63.5)	11/16 (17.5)	
AFCC-44	2-3/4 (69.9)	3/4 (19.1)	
AFCC-48	3 (76.2)	13/16 (29.6)	



TITLE: ALUMINUM FLAT CABLE CLAMP			DWG IN IN (MM) FINAL			
TOLERANCES UNLESS NOTED .XX=±.010 .XXX=±.005 FRAC=±1/64 ANG=±1°		FILE # AFCC	DWN: P.B.	APP:	PART #	
A		MAT'L: ALUMINUM	DT: 01-16-95	DT:	SEE TABLE	
B		RE: RICHCO, INC.	RICHCO INC. PO BOX 804238, CHICAGO, 60680 (773) 539-4060		PRINT TYPE CA	
REV	DESCRIPTION	ENGR DATE				

B	CHANGED FILE NO. AND TITLE BLOCK	SM 03.22.02
A	CONVERTED TO ACAD	PB 01.16.95
REV	DESCRIPTION	ENGR DATE