

Customer Information Sheet

DRAWING No.: M22-302XX00 SHEET 2 OF 2

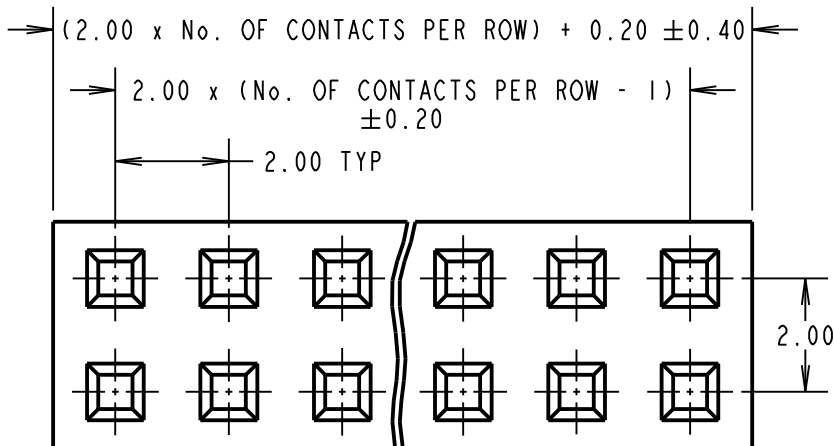
IF IN DOUBT - ASK

©

NOT TO SCALE

THIRD ANGLE PROJECTION

ALL DIMENSIONS IN mm



NOTES:

1. TO BE USED WITH CRIMP CONTACTS M22-30400XX (REELED) OR M22-30500XX (LOOSE).
2. ALL TOLERANCES ARE ± 0.10 UNLESS OTHERWISE STATED.
3. TRIANGLE PIN INDICATOR IS ON PIN 1 AND EVERY 5th PIN AFTER.

SPECIFICATION:

MATERIAL

MOULDING = NYLON 66 UL94V-2, BLACK

ELECTRICAL:

CURRENT RATING = 1A AC/DC

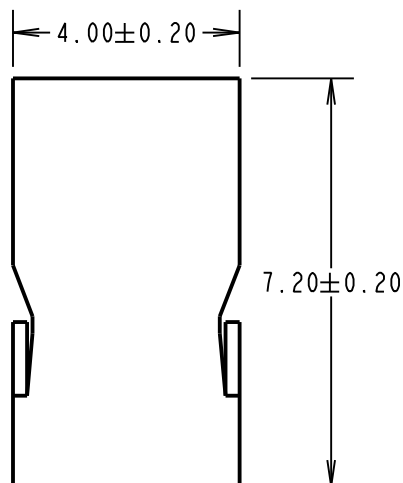
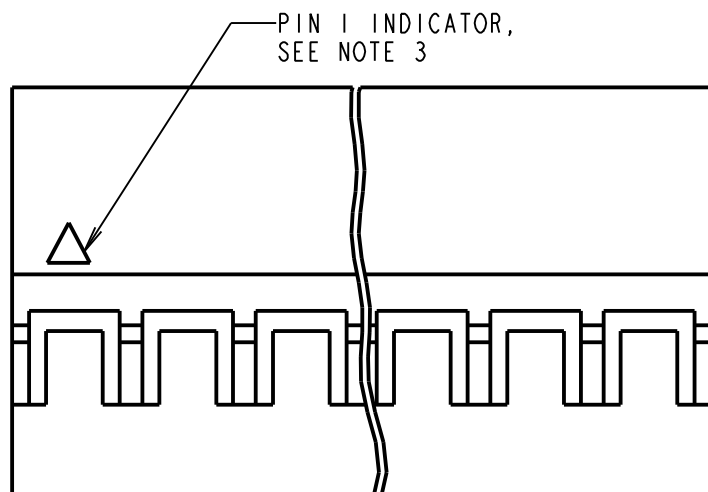
VOLTAGE RATING = 250V AC/DC

DIELECTRIC WITHSTANDING VOLTAGE = 800V AC FOR ONE MINUTE

INSULATION RESISTANCE = $1000M\Omega$ MIN

ENVIRONMENTAL:

OPERATING TEMPERATURE = -25°C TO $+85^{\circ}\text{C}$



ORDER CODE:
M22-302XX00
No. OF CONTACTS PER ROW:
02 TO 20

MSP	12	15.06.15	12803
NAME	ISS.	DATE	C/NOTE
APPROVED:	M.PERREN		
CHECKED:	S.BENNETT		
DRAWN:	A. LIOTTA		
CUSTOMER REF.:			
ASSEMBLY DRG:			

HARWIN

www.harwin.com
technical@harwin.com

THIS DRAWING AND ANY INFORMATION OR DESCRIPTIVE MATTER SET OUT HEREON ARE CONFIDENTIAL AND COPYRIGHT PROPERTY OF THE HARWIN GROUP AND MUST NOT BE DISCLOSED, LOANED, COPIED OR USED FOR MANUFACTURING, TENDERING OR FOR ANY OTHER PURPOSE WITHOUT THEIR WRITTEN PERMISSION.

TOLERANCES
X. = $\pm 1\text{mm}$
X.X = $\pm 0.50\text{mm}$
X.XX = $\pm 0.10\text{mm}$
X.XXX = $\pm 0.01\text{mm}$
ANGLES = $\pm 5^{\circ}$
UNLESS STATED

MATERIAL:

SEE ABOVE

FINISH: SEE ABOVE

S/AREA: mm²

TITLE:

2.00mm DIL CRIMP
SOCKET HOUSING

DRAWING NUMBER:

M22-302XX00

SHT
2
OF
2