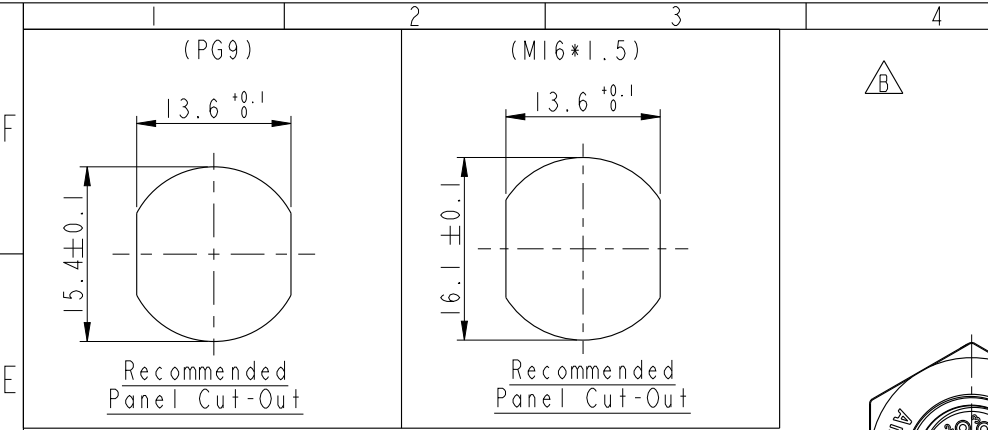
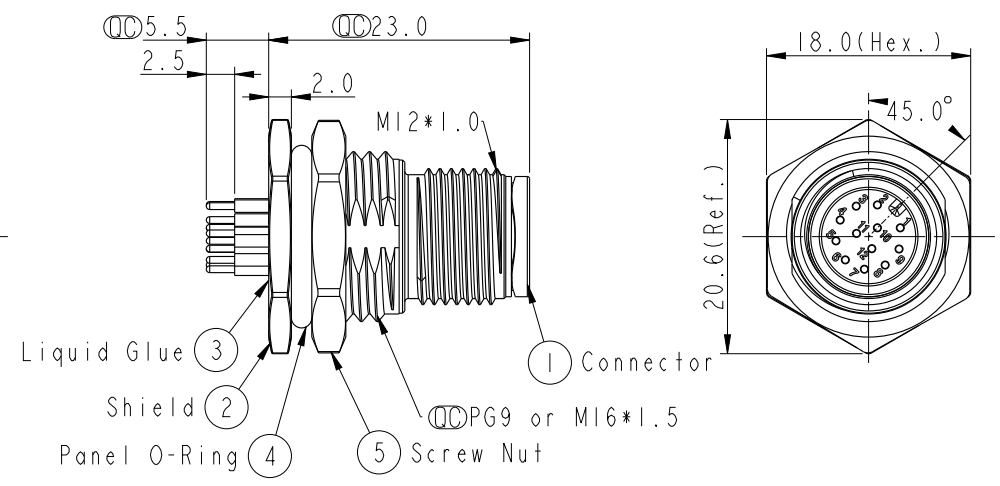
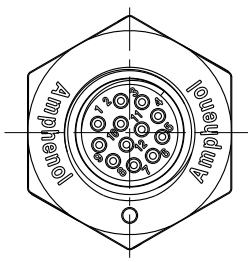


THIS DOCUMENT IS SUBJECT TO CHANGE WITHOUT NOTICE. IT IS CONFIDENTIAL AND A PROPERTY OF Amphenol LTW. DISCLOSURE TO THIRD PARTY HAS TO BE AUTHORIZED BY Amphenol LTW.

| REV. | ECN NO. | DATE | SIGN | DESCRIPTION |
|------|----------------------------------|------------|-------------|--------------------------|
| B | LEN1570240~245 LE31570220~225 | 2015/07/21 | Yulong_wang | Change to Share Drawing. |
| C | LEN1680414~425 | 2016/08/08 | Yulong_wang | Add 6Pin & IP69K. |



△

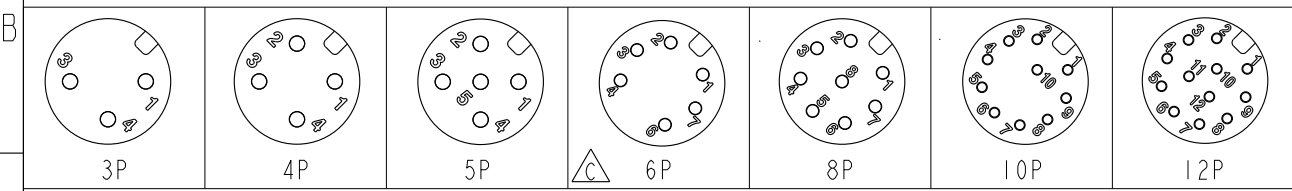


ALTW
CONFIDENTIAL
2016-08-08
R&D DEPT.

ALTW
DCC. DEPT.
CONFIDENTIAL
2016.08.12
ISSUED

Note:

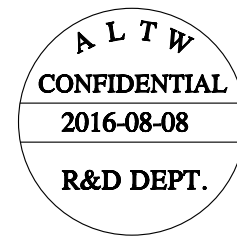
- * \varnothing Important Dimension.
- * Waterproof Rate: IP68, IP69K.
- * Housing: Nylon+GF, Black.
- * Male Pin: Copper Alloy, Gold Plated.
- * Shield: Zinc Alloy, Nickel Plated.
- * Screw Nut: Zinc Alloy, Nickel Plated.
- * Panel O-Ring: Viton, Black.
- * Rated Voltage: 3 & 4Pin 250V dc. or ac.
5Pin 60V dc. or ac.
6~12Pin 30V dc. or ac.
- * Rated Current: 3~5Pin 4A
6~8Pin 2A
10~12Pin 1.5A
- * Operating Temperature: -40~105°C
- * For Panel Thickness Max 4.5mm.
- * Recommended Nut Torque: 4-6 Kgf.cm.



Pin Assignment Front View

| | | | | | | | |
|----------|--|---|----------------|--------------------------------------|------------------|-------------------------|------------------------------|
| UNIT: mm | | TITLE M12 A-Code Male Conn. PCB Type Unshielded | | Amphenol LTW 安費諾亮泰企業股份有限公司 | ITEM NO | DRAWN BY Yulong_wang | DATE 2016-08-08 |
| | | TOLERANCE .X ±0.25 .XX ±0.1 .XXX ±0.05 ANGLES ±1° | SCALE 2:1 | | SIZE A4 | SHEET 1 OF 2 | DWG NO M12A-XXPMMP-SF8XXX |
| | | REV. C | WC-REV. A.5 | \varnothing : Inspection item | CUSTOMER ALTW | APPROVED BY Jerry | DATE 2016-08-08 |

THIS DOCUMENT IS SUBJECT TO CHANGE WITHOUT NOTICE. IT IS CONFIDENTIAL AND A PROPERTY OF Amphenol LTW. DISCLOSURE TO THIRD PARTY HAS TO BE AUTHORIZED BY Amphenol LTW.



M I2A - XX P M M P - S F 8 XXX

12A: A-Code

03: 3Pin
04: 4Pin
05: 5Pin
06: 6Pin
08: 8Pin
10: 10Pin
12: 12Pin

P: Panel (板端)
M: Male Connector (公座)

001: PG9
002: M16*1.5

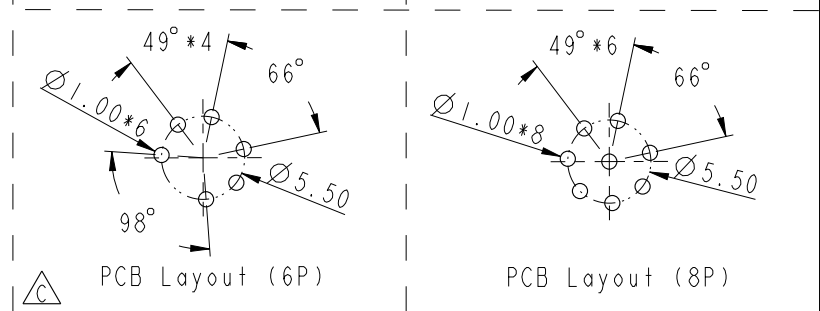
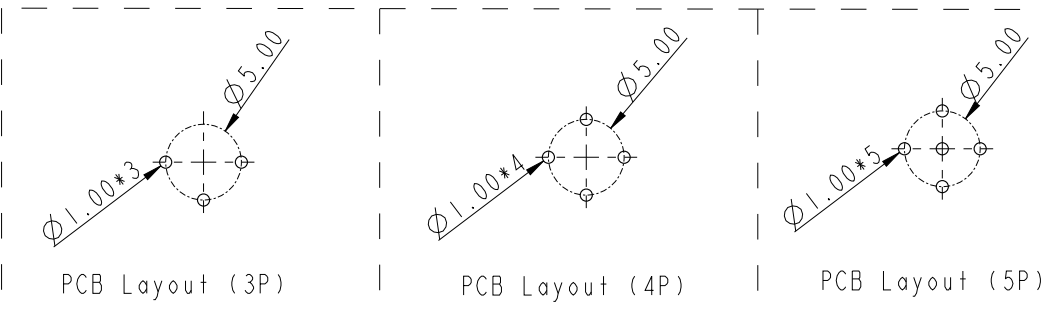
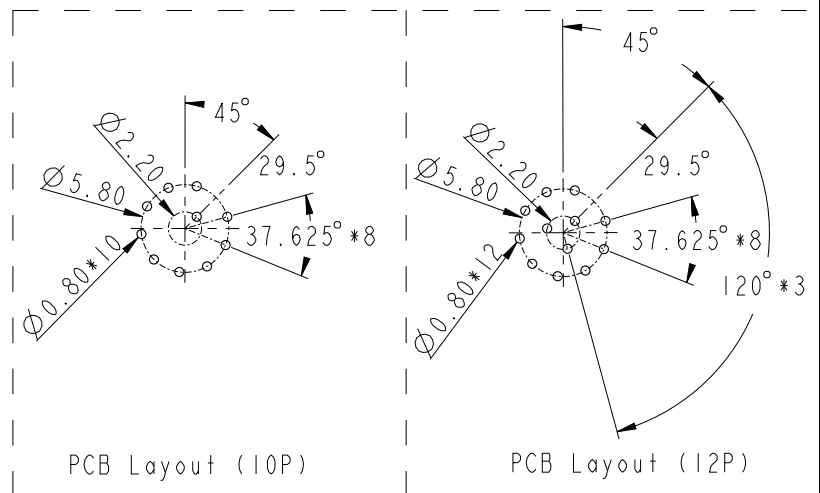
8: IP68 (防水等級68/69K)

F: Front Fasten (前鎖式/Enclosure Rear Mount)

S: Screw (螺紋式)

P: PCB THT/DIP Type (180°基板插件式)

M: Male Pin (公Pin)



| | | |
|------------|----------|----------|
| UNIT: mm | | |
| TOLERANCE | .X ±0.25 | .XX ±0.1 |
| .XXX ±0.05 | | |
| ANGLES | ±1° | |

| | | |
|---|----------------|-----------------|
| TITLE M12 A-Code Male Conn. PCB Type Unshielded | | |
| SCALE 2:1 | SIZE A4 | SHEET 2 OF 2 |
| REV. C | WC-REV. A.4 | Inspection item |

Amphenol LTW
安費諾亮泰企業股份有限公司

| | |
|------------------|------------------------------|
| ITEM NO | DWG NO M12A-XXPMPM-SF8XXX |
| CUSTOMER ALTW | |

| | |
|-------------------------|----------------------|
| DRAWN BY Yulong_wang | CHECKED BY Jinhai |
| APPROVED BY Jerry | |

| | |
|--------------------|--------------------|
| DATE 2016-08-08 | DATE 2016-08-08 |
| DATE 2016-08-08 | |