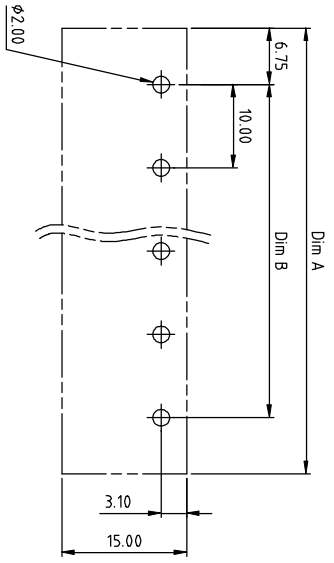
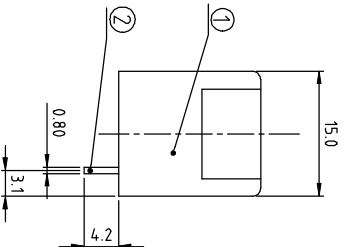
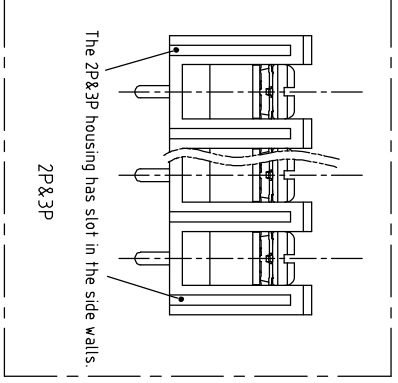
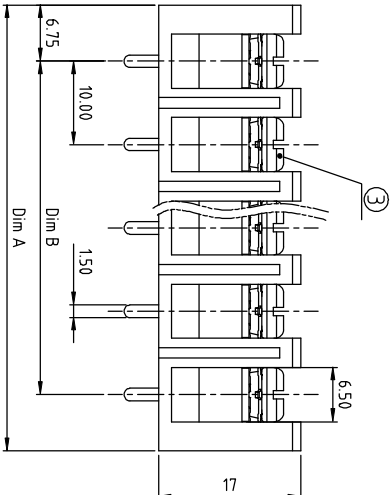
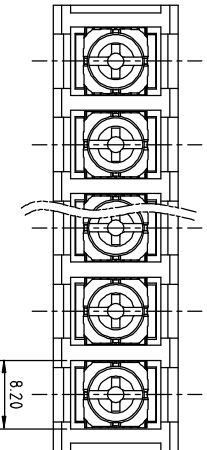


PRODUCT NUMBER	PITCH
YK604xx0x0J0G	10.00mm



RECOMMENDED P.C.B LAYOUT
TOP VIEW

MATERIALS ELECTRICAL
 RATED VOLTAGE & CURRENT: 300 V, 20 A
 WITHSTAND VOLTAGE: AC 2000 V/Min
 INSULATION RESISTANCE: 1000 M Ω OR MORE AT DC 500 V
 OPERATING TEMPERATURE RANG: -40 °C ~ +115 °C
 SCREW TORQUE VALUE: 12Lb-in.
 WIRE RANGE: 22 - 12 AWG
 1) HOUSING: THERMOPLASTIC, UL 94 V-0 BLACK
 2) TERMINAL: BRASS, 0.8t
 3) SCREWS: STEEL, M3.5
 APPROVAL: **RA**

PART NO.: YK 604XX 0 X 0 J0G

DIMENSION

Dim A	Nx10.0±0.35
Dim B	(N-1)x10.0

N=Number of poles

Poles	Tolerance
2P-4P	±0.20
5P-10P	±0.30
11P-24P	±0.40
25P-30P	±0.50

No. of poles	Code	Terminal	Screw	Plated	RoHS compliant (lead <math><4\%</math>)
02 2 poles	0	G/F	G/F		In copper Alloy
03 3 poles	1	G/F	Zinc		
30 30 poles	2	Tin	G/F		
	3	Tin	Zinc		

mat'l. code	surface	tolerance	projection	product family
itr	ASME Y14.5	ASME Y14.5	MM	TERMINAL BLOCK
ecn	tolerances unless otherwise specified	X:±0.5		
no		X.X±0.3		
dr	X:±1	X.XX±0.1	scale	TERMINAL BLOCK
engr	EVAN LU	061414		
chr	HANKE FENG	061414		
oppl	SHI JUN	061414		

sheet index	revision	sheet	date
1	A	1	



title: TERMINAL BLOCK
 product family: TERMINAL BLOCK
 sheet 1 of 1 size: A4
 type: CUSTOMER Drawing