

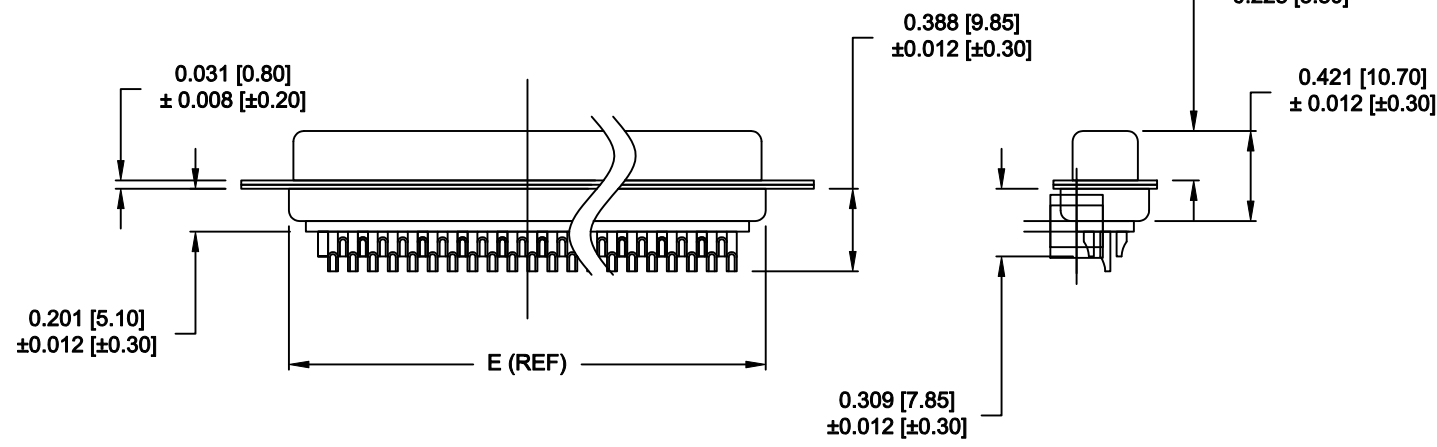
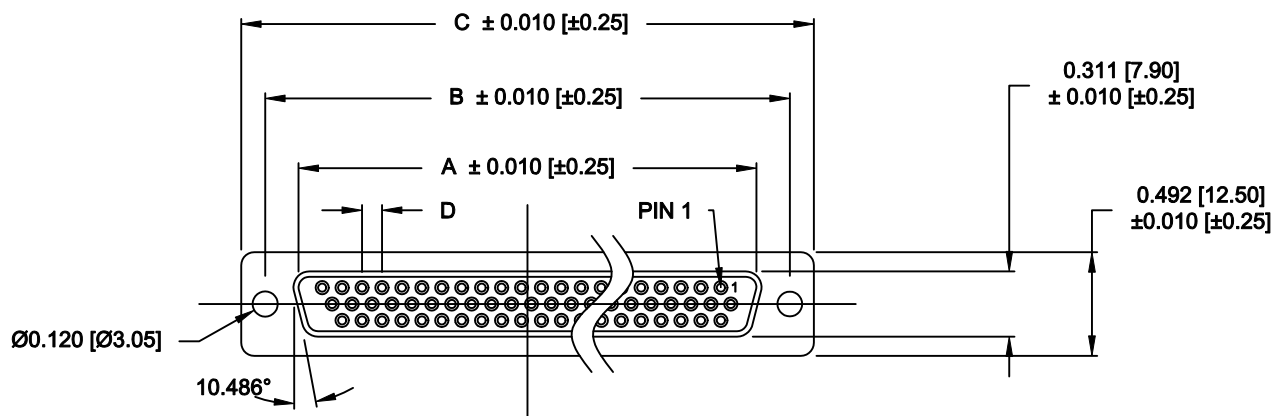
DESCRIPTION: HIGH DENSITY - MACHINED CONTACTS - SOLDER CUP

**MATERIALS AND FINISH:**

SHELL: STEEL MATERIAL, NICKEL FINISH  
 INSULATOR: PBT THERMOPLASTIC 30% GLASS FILLED, UL 94V-0 RATED, BLACK COLOR  
 CONTACT MATERIAL: COPPER ALLOY  
 CONTACT FINISH: GOLD PLATED

**ELECTRICAL:**

CONTACT CURRENT RATING: 5 AMPS  
 CONTACT RESISTANCE: 10 Milliohms Max.  
 DIELECTRIC WITHSTANDING VOLTAGE: 1,000VAC Min.  
 INSULATION RESISTANCE: 5 GOHMS Min.  
 TEMPERATURE RATING: -55° ~ +125° C



**180-MYY-20YLYYY**

SERIES \_\_\_\_\_  
 MACHINED CONTACTS \_\_\_\_\_  
 POSITION \_\_\_\_\_  
 15 \_\_\_\_\_  
 26 \_\_\_\_\_  
 44 \_\_\_\_\_  
 62 \_\_\_\_\_  
 GENDER \_\_\_\_\_  
 2 = FEMALE  
 TERMINATION \_\_\_\_\_  
 0 = SOLDER CUP  
 SHELL PLATING \_\_\_\_\_  
 3 = NICKEL  
 RoHS (LOW TEMP.) 230° PROCESS \_\_\_\_\_  
 HARDWARE \_\_\_\_\_  
 00 = Ø 0.120" HOLE  
 01 = 0.098" 4-40 INSERT, BOARD SIDE  
 02 = 0.250" 4-40 INSERT, BOARD SIDE  
 03 = 0.250" 4-40 INSERT, MATING SIDE  
 CONTACT PLATING \_\_\_\_\_  
 1 = GOLD FLASH, ENTIRE CONTACT  
 2 = 30u" GOLD, ENTIRE CONTACT

DIMENSIONS (IN.)					
No. OF PINS	A	B	C	D	E
15	0.642	0.984	1.213	0.090	0.756
	16.30	25.00	30.80	2.29	19.20
26	0.969	1.311	1.543	0.090	1.091
	24.60	33.30	39.20	2.29	27.70
44	1.512	1.852	2.089	0.090	1.618
	38.40	47.05	53.05	2.29	41.10
62	2.159	2.500	2.729	0.094	2.256
	54.83	63.50	69.32	2.39	57.30

ACCEPTS 28 - 24 AWG WIRE

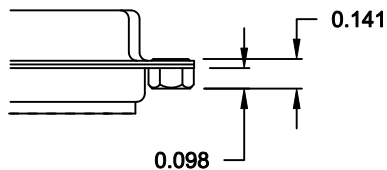
DO NOT SCALE FROM DRAWING

	THESE DRAWINGS AND SPECIFICATIONS ARE THE PROPERTY OF NorComp AND SHALL NOT BE REPRODUCED, COPIED OR USED AS THE BASIS FOR THE MANUFACTURE OF SALE OF APPARATUS WITHOUT WRITTEN PERMISSION.		DRAWN: C. SMITH	DATE: 03-13-07
			CHECKED:	DATE:
<b>NorComp</b>	SCALE: 1 : 1	SHEET 1 OF 2	REV 10	
	DWG NO. 180-MYY-20YLYYY			

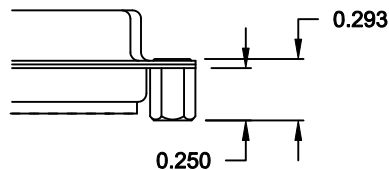
RoHS COMPLIANT

**ALL CLINCH-NUTS ARE 4-40 INTERNAL THREADS**

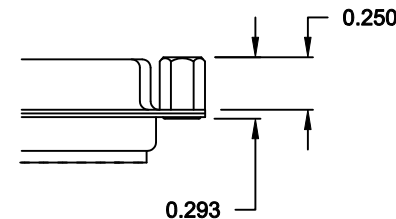
01X ..... 0.098" (BOARD SIDE) - CN1



02X ..... 0.250" (BOARD SIDE) - CN2



03X..... 0.250" (MATING SIDE) - CN8



**DO NOT SCALE FROM DRAWING**



THESE DRAWINGS AND SPECIFICATIONS ARE THE PROPERTY OF NorComp AND SHALL NOT BE REPRODUCED, COPIED OR USED AS THE BASIS FOR THE MANUFACTURE OF SALE OF APPARATUS WITHOUT WRITTEN PERMISSION.

DRAWN:  
**C. SMITH**

DATE:  
**02-12-08**

CHECKED:

DATE:

**NorComp**

SCALE:	SHEET	OF	REV
	2	2	10

DWG NO. **180-MYY-20YLYYY**

**RoHS COMPLIANT**