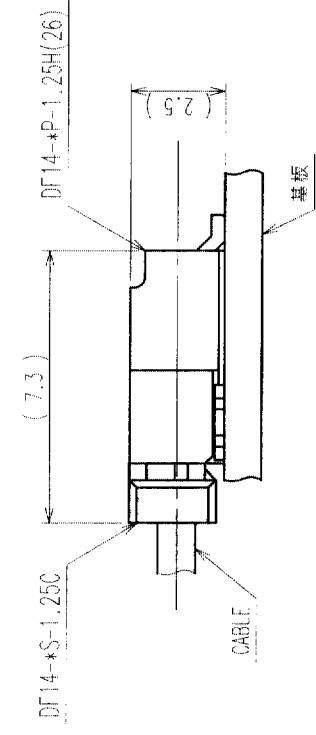


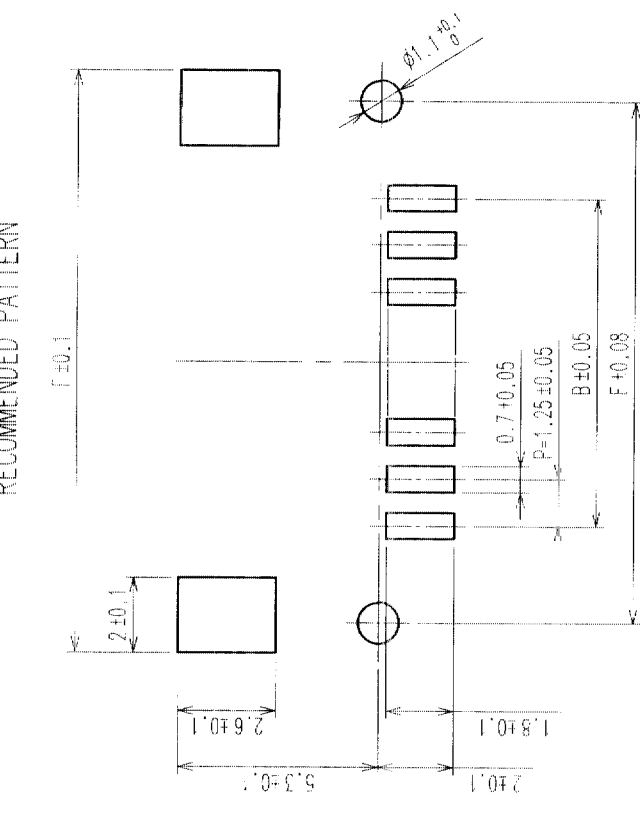
COUNT	DESCRIPTION OF REVISIONS	BY	CHKD	DATE	COUNT	DESCRIPTION OF REVISIONS	BY	CHKD	DATE

2 APPLICATION PATTERN

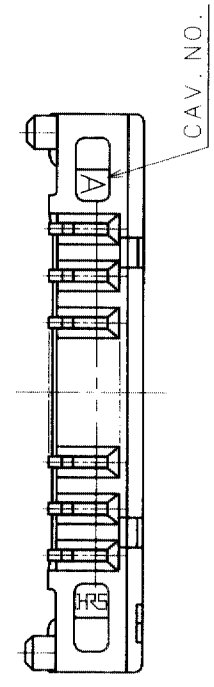
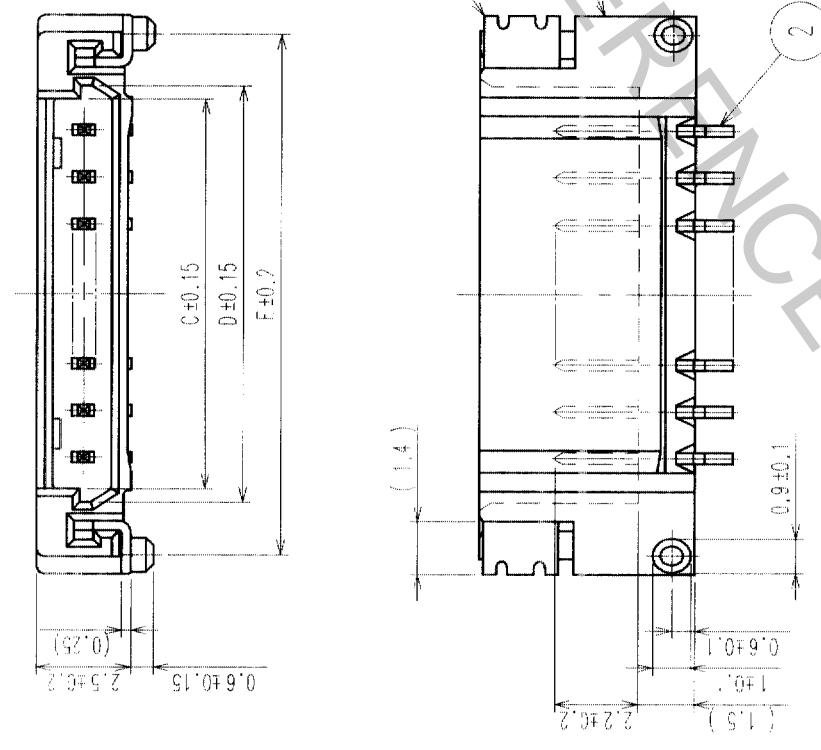
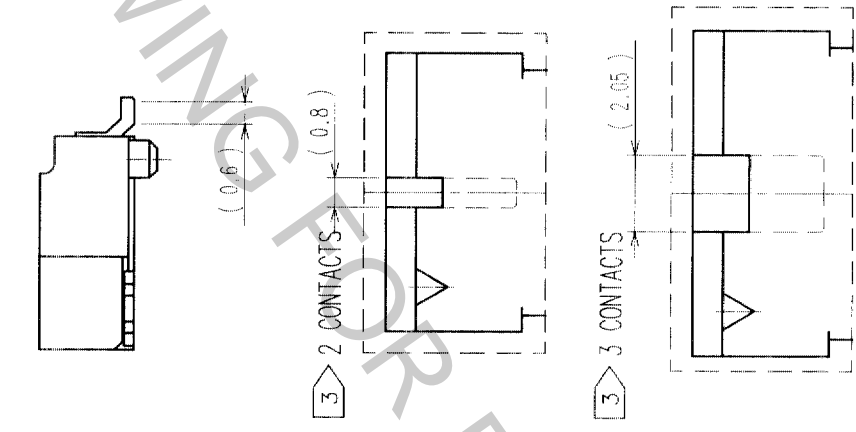


PART NO.	HRS NO.	CONTACTS	A	B	C	D	E	F
DF14-2P-1.25H(26)	CL538-0021-4-26	2	7.45	1.25	2.95	3.65	6.45	8.05
DF14-3P-1.25H(26)	CL538-0022-7-26	3	8.70	2.50	4.20	4.90	7.70	9.30
DF14-4P-1.25H(26)	CL538-0023-0-26	4	9.95	3.75	5.45	6.15	8.95	10.55
DF14-5P-1.25H(26)	CL538-0024-2-26	5	11.20	5.00	6.70	7.40	10.20	11.80
DF14-6P-1.25H(26)	CL538-0025-5-26	6	12.45	6.25	7.95	8.65	11.45	13.05
DF14-7P-1.25H(26)	CL538-0026-8-26	7	13.70	7.50	9.20	9.90	12.70	14.30
DF14-8P-1.25H(26)	CL538-0027-0-26	8	14.95	8.75	10.45	11.15	13.95	15.55
DF14-9P-1.25H(26)	CL538-0028-3-26	9	16.20	10.00	11.70	12.40	15.20	16.80
DF14-10P-1.25H(26)	CL538-0029-6-26	10	17.45	11.25	12.95	13.65	16.45	18.05
DF14-15P-1.25H(26)	CL538-0084-4-26	15	23.70	17.50	19.20	19.90	22.70	24.30
DF14-20P-1.25H(26)	CL538-0089-8-26	20	29.95	23.75	25.45	26.15	28.95	30.55
DF14-25P-1.25H(26)	CL538-0094-8-26	25	36.20	30.00	31.70	32.40	35.20	36.80
DF14-30P-1.25H(26)	CL538-0020-1-26	30	42.45	36.25	37.95	38.65	41.45	43.05

RECOMMENDED PATTERN



NOTE 1. LEAD CO-PLANALITY INCLUDE REINFORCED METAL FITTING SHALL BE 0.1 MAX.
 2. WHEN THIS CONNECTOR MATES WITH DF14-S-1.25C, THE MATTING LENGTH IS 7.3mm.
 3. FOR CONNECTORS, 2 OR 3 CONTACTS, SIMPLIFIED LOCK HOLE SHALL BE SET AT THE CENTER OF HOUSING.



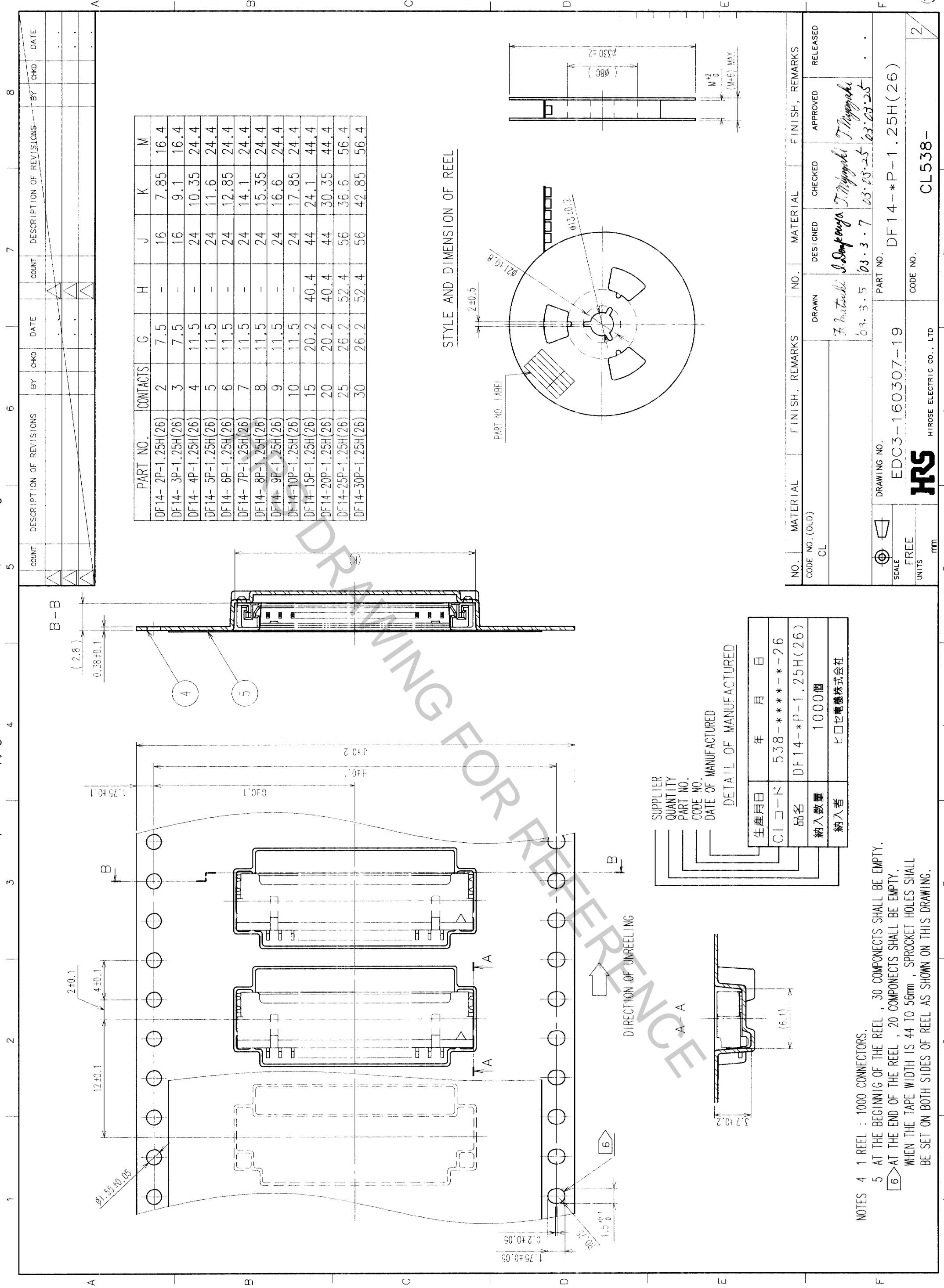
NO.	MATERIAL	FINISH, REMARKS	NO.	MATERIAL	FINISH, REMARKS
3	PHOSPHOR BRONZE	TIN-COPPER PLATED 1μm min UNDER PLATING: NICKEL PLATED 0.5μm min	5	POLYESTER	CLEAR (COVER TAPE)
2	BRASS	TIN-COPPER PLATED 1μm min UNDER PLATING: NICKEL PLATED 0.5μm min	4	A-PET	CLEAR (EMBOSSED CARRIER TAPE)
1	POLYAMIDE	BEIGE, UL94V-0			

CODE NO. (OLD)	CL	DRAWN	DESIGNED	CHECKED	APPROVED	RELEASED
		F. Inoue	S. Tomiyama	T. Miyaguchi	T. Miyaguchi	
		03.3.5	03.3.7	03.03.25	03.03.25	

DRAWING NO.	PART NO.
EDC3-160307-19	DF14-*P-1.25H(26)

SCALE	UNITS	CODE NO.
5 : 1	MM	CL538-

TO	DATE



PART NO.	CONTACTS	G	H	J	K	M
DF14-2P-1.25H(26)	2	7.5	-	16	7.85	16.4
DF14-3P-1.25H(26)	3	7.5	-	16	9.1	16.4
DF14-4P-1.25H(26)	4	11.5	-	24	10.35	24.4
DF14-5P-1.25H(26)	5	11.5	-	24	11.6	24.4
DF14-6P-1.25H(26)	6	11.5	-	24	12.85	24.4
DF14-7P-1.25H(26)	7	11.5	-	24	14.1	24.4
DF14-8P-1.25H(26)	8	11.5	-	24	15.35	24.4
DF14-9P-1.25H(26)	9	11.5	-	24	16.6	24.4
DF14-10P-1.25H(26)	10	11.5	-	24	17.85	24.4
DF14-15P-1.25H(26)	15	20.2	40.4	44	24.1	44.4
DF14-20P-1.25H(26)	20	20.2	40.4	44	30.35	44.4
DF14-25P-1.25H(26)	25	26.2	52.4	56	36.6	56.4
DF14-30P-1.25H(26)	30	26.2	52.4	56	42.85	56.4

STYLE AND DIMENSION OF REEL

DETAIL OF MANUFACTURED	
生年月日	年 月 日
CLコード	538-**-**-26
品名	DF14-*P-1.25H(26)
納入数量	1000個
納入者	ヒロセ電機株式会社

NOTES
 4 1 REEL : 1000 CONNECTORS.
 5 AT THE BEGINNING OF THE REEL , 30 COMPONENTS SHALL BE EMPTY.
 6 AT THE END OF THE REEL , 20 COMPONENTS SHALL BE EMPTY.
 WHEN THE TAPE WIDTH IS 44 TO 56mm , SPROCKET HOLES SHALL BE SET ON BOTH SIDES OF REEL AS SHOWN ON THIS DRAWING.

NO.	MATERIAL	FINISH, REMARKS	NO.	MATERIAL	FINISH, REMARKS
CODE NO. (OLD) CL			DESIGNED S. Sano	CHECKED T. Miyagaki	APPROVED T. Miyagaki
SCALE FREE			DRAWN F. Matsuda		
UNITS mm					
DRAWING NO. EDC3-160307-19		PART NO. DF14-*P-1.25H(26)		RELEASED	
CODE NO. HRS		CODE NO. CL538-		2	
HIROSE ELECTRIC CO., LTD					