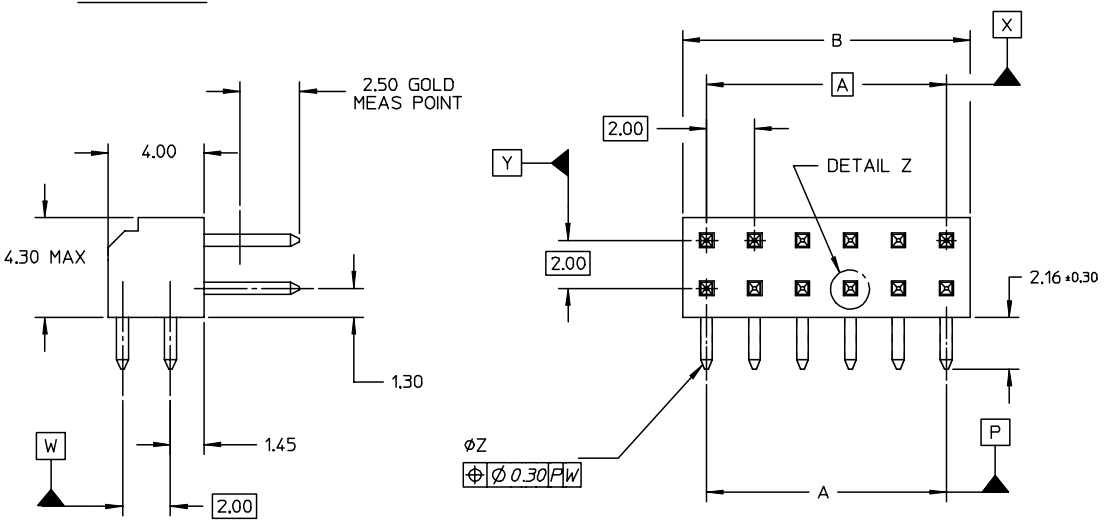
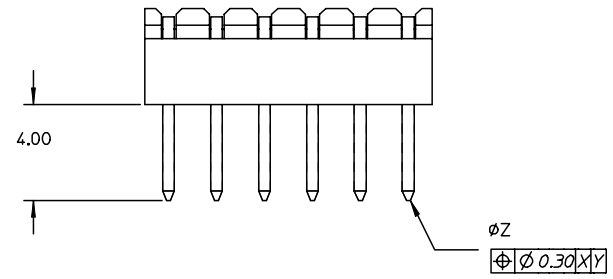
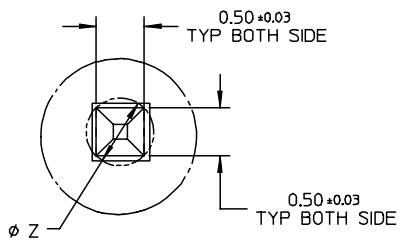


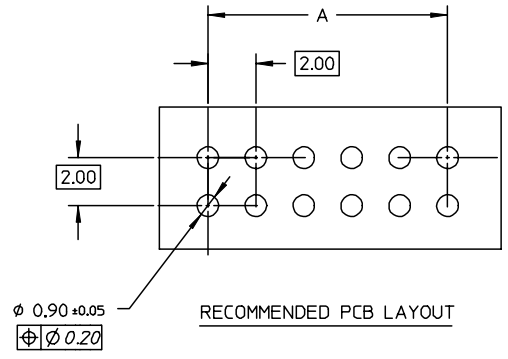
87760

PART NUMBER	CKT SIZE	A	B
87760-0878	08	6.00	8.00
87760-1078	10	8.00	10.00
87760-1278	12	10.00	12.00
87760-1678	16	14.00	16.00
87760-2278	22	20.00	12.00
87760-3078	30	28.00	30.00



LEGEND:
 87760 - * * 7 8
 CKT SIZE (SEE TABLE) PLATING (SEE NOTE 2)

- NOTES:**
- MATERIAL:
 HSG: PCT, 30% GLASS FILLED, UL 94V-0, COLOUR BLACK.
 PIN: 0.50MM SQ PHOSPHOR BRONZE 510
 - PLATING:
 0.38um MIN GOLD IN CONTACT AREA, TIN IN SOLDER TAIL AREA, BOTH OVER NICKEL OVERALL
 - 12 CKT USED FOR ILLUSTRATION ONLY
 - PART TO BE PACKED IN POCKET TRAY.
 - PRODUCT SPEC PS-87761-100 APPLIES.
 - RECOMMENDED PCB BOARD THK 1.30±0.10 MM. MAX.



EC NO: S2004-0195 DRWN: KSEE 2003/12/15 CHKD: KCLING 2003/12/15 APPR: SKTOH 2003/12/19	DESCRIPTION REV A	QUALITY SYMBOLS	GENERAL TOLERANCES (UNLESS SPECIFIED)	SCALE NTS	DESIGN UNITS METRIC	THIRD ANGLE PROJECTION	REVISE ON CAD ONLY																
		$\nabla = 0$ $\sphericalangle = 0$	<table border="1"> <thead> <tr> <th></th> <th>mm</th> <th>INCH</th> </tr> </thead> <tbody> <tr> <td>4 PLACES</td> <td>± ---</td> <td>± ---</td> </tr> <tr> <td>3 PLACES</td> <td>± ---</td> <td>± ---</td> </tr> <tr> <td>2 PLACES</td> <td>± 0.2</td> <td>± ---</td> </tr> <tr> <td>1 PLACE</td> <td>± ---</td> <td>± ---</td> </tr> </tbody> </table>		mm	INCH	4 PLACES	± ---	± ---	3 PLACES	± ---	± ---	2 PLACES	± 0.2	± ---	1 PLACE	± ---	± ---	DIMENSION STYLE MM ONLY	TITLE	SALES DRAWING MGRID 2MM DUAL ROW R/A HDR.		
			mm	INCH																			
		4 PLACES	± ---	± ---																			
3 PLACES	± ---	± ---																					
2 PLACES	± 0.2	± ---																					
1 PLACE	± ---	± ---																					
DRAFT WHERE APPLICABLE	ANGULAR ± 1 °	DRAWN BY DATE KSEE 2003/10/16	CHECKED BY DATE KCLING 2003/12/02	MOLEX INCORPORATED																			
MUST REMAIN WITHIN DIMENSIONS		APPROVED BY DATE SKTOH 2003/12/11	MATERIAL NO. SEE TABLE	DOCUMENT NO. SD-87760-126	SHEET NO. 1 OF 1																		