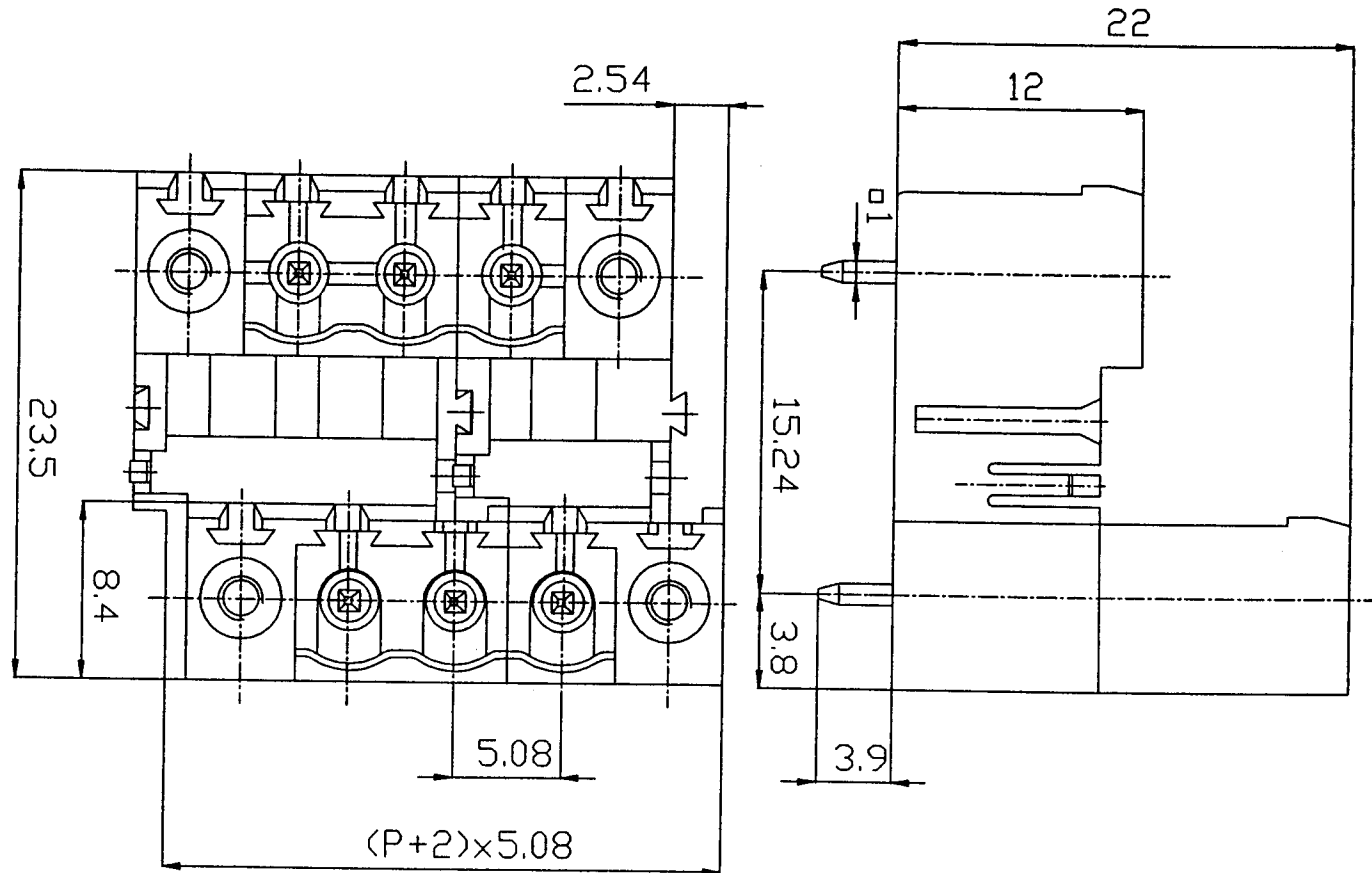


**Ratings:**  
 Current 15A  
 Voltage 300 V  
 Test Voltage / Dirt Level 4.0 kV / 3

**Dimensions:**  
 Spacing 5.08mm  
 PCB Hole Diameter 1.4mm

**Materials:**  
 Insulating Material PA  
 Flammability UL94V-0  
 Temperature -30°C/+105°C  
 Contact Pin Cu  
 Color Green



Part Number  
**EDSTLZ975/[\*][\*]-F**  
 \* - NUMBER OF POSITIONS

Units  
 mm

Drawing

Reviewed

Approved

Date  
 3/22/99  
 Sheet 1 of 1  
 Rev. A