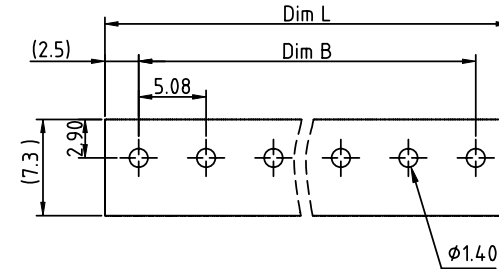
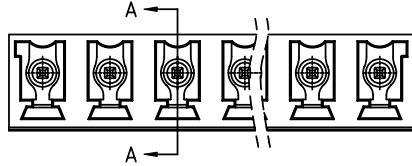
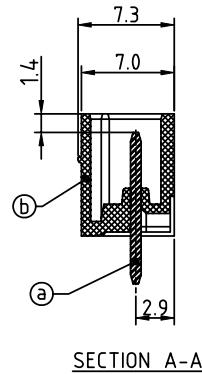
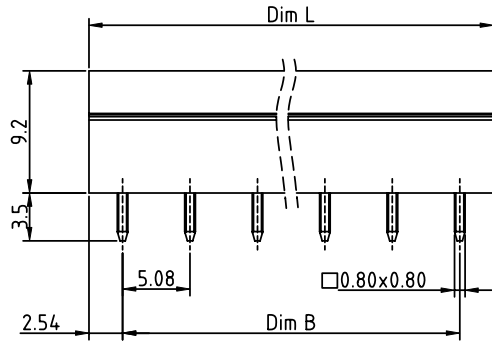


PRODUCT NUMBER	PITCH
VSxx51x000J0G	5.08 mm



RECOMMENDED P.C.B LAYOUT
TOP VIEW



SECTION A-A

Material:

- Item ③ Contact pin: Copper, Tin plated
- Item ⑥ Terminal(housing): Thermoplastic (UL94V-0)

Electrical:

- cULus
- Voltage rating: 300V
- Current rating: 8A
- Withstanding Voltage: 1.6 KV
- Operating temperature: -40°C to +115°C
- Soldering temperature: 260°C±5°C/5 Sec
- Safety Approval:

DIMENSION

Dim L	N×5.08
Dim B	(N-1)×5.08

N=Number of poles

Poles	Tolerance
2P-5P	±0.15
6P-10P	±0.25
11P-15P	±0.30
16P-24P	±0.40

PART NO.: VS xx 51 x 0 00J0 G

Solid block	0	Black (RAL9005)	Color	RoHS compliant
No. of poles	2	Red (RAL3001/D)		(lead<4%)
02 2 poles	3	Orange(RAL2011/P)		In copper Alloy
03 3 poles	4	Yellow(RAL1018/A)		
... ..	5	Green(RAL6018/T)		
24 24 poles	6	Blue (RAL5015/A)		
	8	Grey(RAL7035/D)		
	9	White(RAL1102)		
	C	Green(RAL6018/U)		

mat'l. code		surface ASME Y14.5	tolerance ASME Y14.5	projection 	product family TERMINAL BLOCK
ltr	ecn no	dr	date	tolerances unless otherwise specified	title TERMINAL BLOCK
				angles 	PLUGGABLE SOCKET,CLOSE VERTICAL
				X*±1°	scale
		dr	EVIN ZHONG	042214	dwg no
		enr	EVIN ZHONG	042214	sheet 1 of 1
		chr	HANKE FENG	042214	size A4
		appd	SHI JUN	042214	type CUSTOMER Drawing
sheet index	revision	A			
	sheet	1			