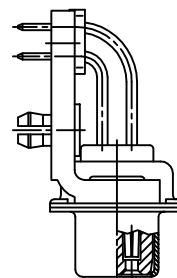
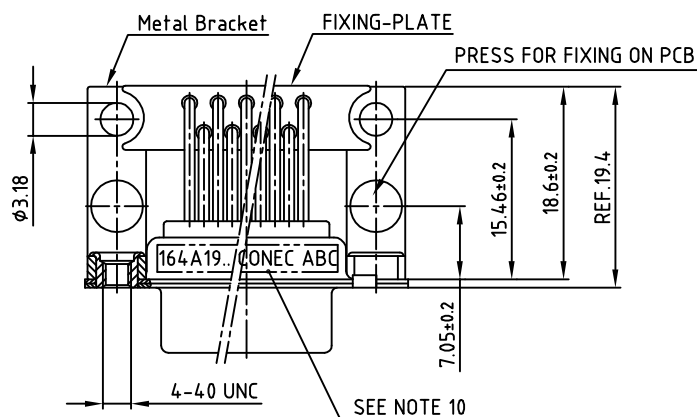
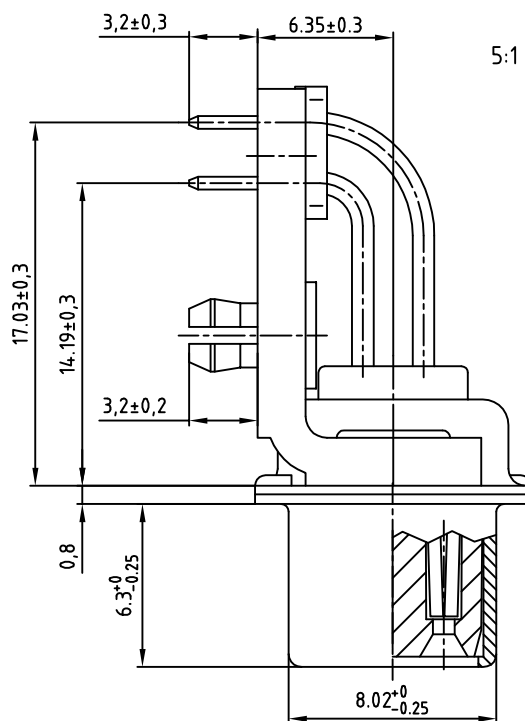
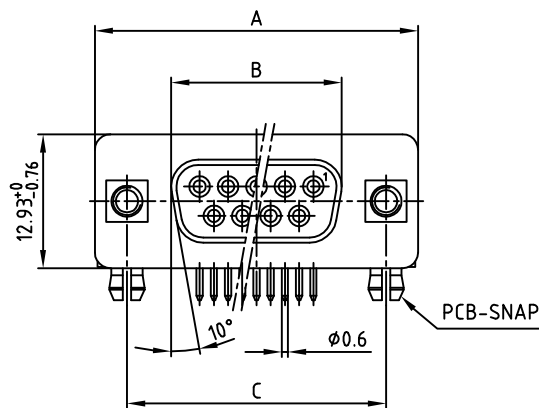


used for: D-SUB

Polzahl No. of pos.	A $\pm 0.76$	B $\pm 0.25$	C	Part. No.
9	31.19	16.46	25.00 $\begin{smallmatrix} -0.12 \\ -0.13 \end{smallmatrix}$	164A19639X
15	39.52	24.79	33.30 $\begin{smallmatrix} -0.15 \\ -0.1 \end{smallmatrix}$	164A19649X
25	53.42	38.50	47.04 $\pm 0.13$	164A19659X
37	69.70	54.96	63.50 $\pm 0.13$	164A19669X



NOTES:

- METALSHELLS: STEEL; min. 315µin TIN over 40-80µin NICKEL
- INSULATORS: PBT GF UL 94 V-0, BLACK
- CONTACTS: COPPER ALLOY  
PLATING: 8µin HARD GOLD OVER min. 50µin NICKEL
- THREADED INSERTS: COPPER ALLOY; min. 200µin TIN over 80µin NICKEL
- METAL BRACKETS: ZINC DIE CAST; 300µin COPPER/40-120µin NICKEL/120-200µin TIN
- P.C.B. SNAPS: COPPER ALLOY; min. 200µin TIN over 80µin NICKEL  
PCB-HOLE:  $\phi 3.1 \pm 0.1$ ; PCB THICKNESS 1.6mm
- FIXING-PLATE: PBT GF UL 94 V-0, BLACK
- P.C.B. HOLE DRILLINGS ON SHEET 2/3
- MAXIMUM TORQUE VALUE FOR THREAD: 6 in.LB
- CONNECTOR IS PART MARKED: PART-NO. CONEC ABC



APPROVAL # FREIGABE # DEBLOCAGE # AUTORIZACION # APPROVAL	
CUSTOMER APPROVAL DATE:	
NAME:	TITLE:
COMPANY NAME:	
APPROVAL # FREIGABE # DEBLOCAGE # AUTORIZACION # APPROVAL	

THIS DRAWING MAY NOT BE COPIED OR REPRODUCED IN ANY WAY, AND MAY NOT BE PASSED ON TO A THIRD PARTY, WITHOUT WRITTEN PERMISSION. OWNERSHIP AND COPYRIGHT OF CONEC GmbH DO NOT ALTER CAD DRAWING BY HAND

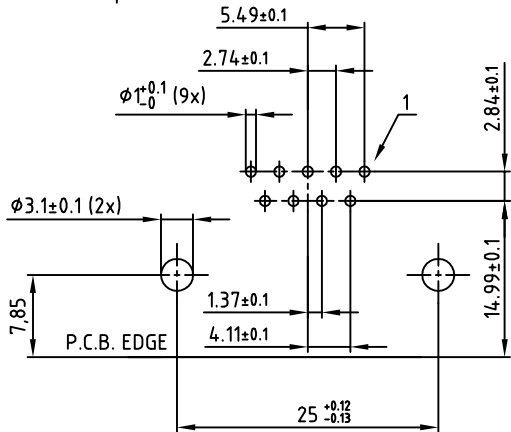
rev.	description	date	name
a	Origin		

tolerance		scale:	2:1 (5:1)
	dim. in mm	material:	SEE NOTES
2009	date	name	
drawn	30.07.	Sonnenberg	
appd.	30.07.	Koch	
norm			
d-old			
		dwg no:	AutoCAD 2006 DIN-A
			3 sh:1/3

title: D-SUB FEMALE 90°  
 9-37pos. SOLDER PIN ANGLED 0.590inch  
 with threaded insert, metal bracket, fixing-plate and snap  
 part no: SEE TABLE

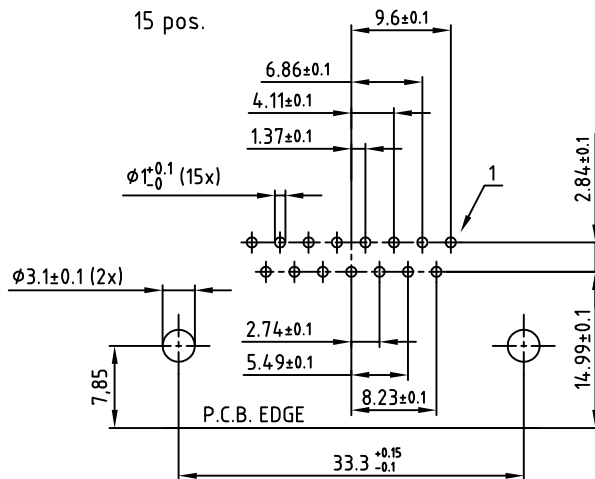
used for: D-SUB

9 pos.



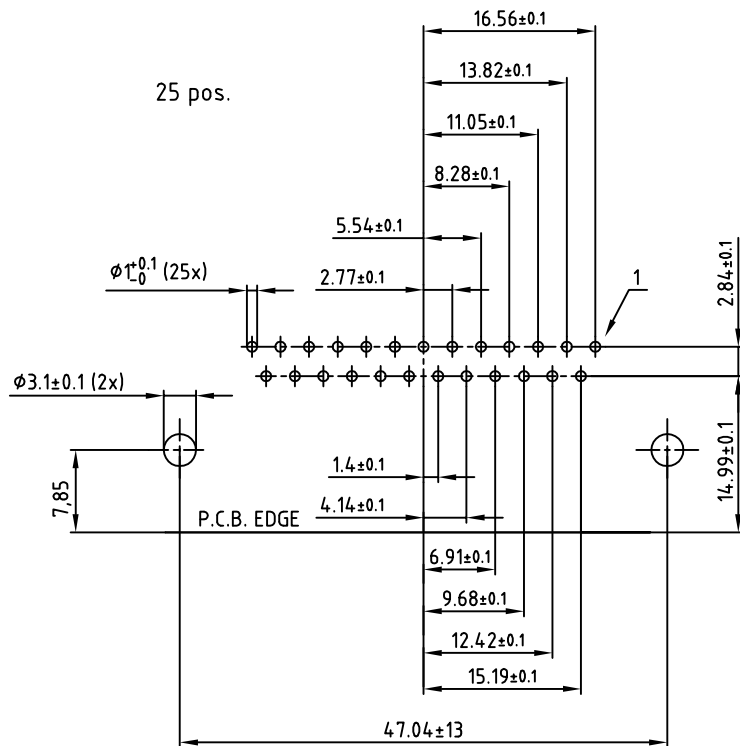
PCB TOP SIDE

15 pos.



PCB TOP SIDE

25 pos.



PCB TOP SIDE

APPROVAL # FREIGABE # DEBLOCAGE # AUTORIZACION # APPROVAL	
CUSTOMER APPROVAL DATE:	
NAME:	TITLE:
COMPANY NAME:	
APPROVAL # FREIGABE # DEBLOCAGE # AUTORIZACION # APPROVAL	

THIS DRAWING MAY NOT BE COPIED OR REPRODUCED IN ANY WAY, AND MAY NOT BE PASSED ON TO A THIRD PARTY, WITHOUT WRITTEN PERMISSION. OWNERSHIP AND COPYRIGHT OF CONEC GmbH DO NOT ALTER CAD DRAWING BY HAND

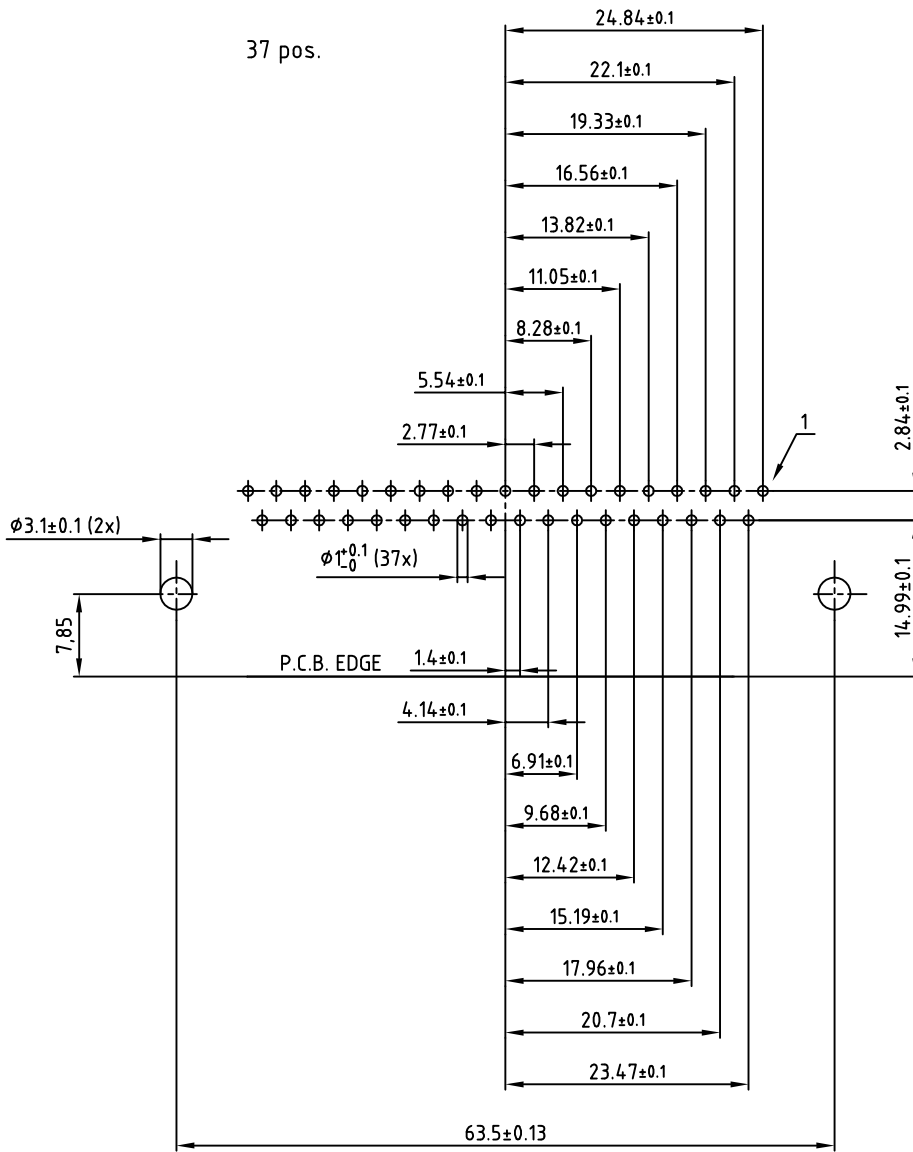
rev.	description	date	name
a	Origin		

tolerance			dim. in mm
2009	date	name	
	drawn	30.07.	Sonnenberg
	appd.	30.07.	Koch
	norm		
	d-old		

scale:	2:1
material:	SEE SHEET 1
title:	
P.C.B. HOLE DRILLINGS	
D-SUB FEMALE 90° 9-37pos. ANGLED 0.590inch with threaded insert, metal bracket, fixing-plate and snap	
dwg no:	AutoCAD 2006 DIN-A
	3 sh:2/3
part no:	SEE SHEET 1



used for: D-SUB



PCB TOP SIDE

APPROVAL # FREIGABE # DEBLOCAGE # AUTORIZACION # APPROVAL	
CUSTOMER APPROVAL DATE:	
NAME:	TITLE:
COMPANY NAME:	
APPROVAL # FREIGABE # DEBLOCAGE # AUTORIZACION # APPROVAL	

THIS DRAWING MAY NOT BE COPIED OR REPRODUCED IN ANY WAY, AND MAY NOT BE PASSED ON TO A THIRD PARTY, WITHOUT WRITTEN PERMISSION. OWNERSHIP AND COPYRIGHT OF CONEC GmbH DO NOT ALTER CAD DRAWING BY HAND

rev.	description	date	name	tolerance	dim. in mm
2009	date	name			
drawn	30.07.	Sonnenberg			
appd.	30.07.	Koch			
norm					
d-old					
a	Origin				



scale:	2:1
material:	SEE SHEET 1
title:	P.C.B. HOLE DRILLINGS D-SUB FEMALE 90° 9-37pos. ANGLED 0.590inch with threaded insert, metal bracket, fixing-plate and snap
dwg no:	AutoCAD 2006 DIN-A 3 sh:3/3
part no:	SEE SHEET 1