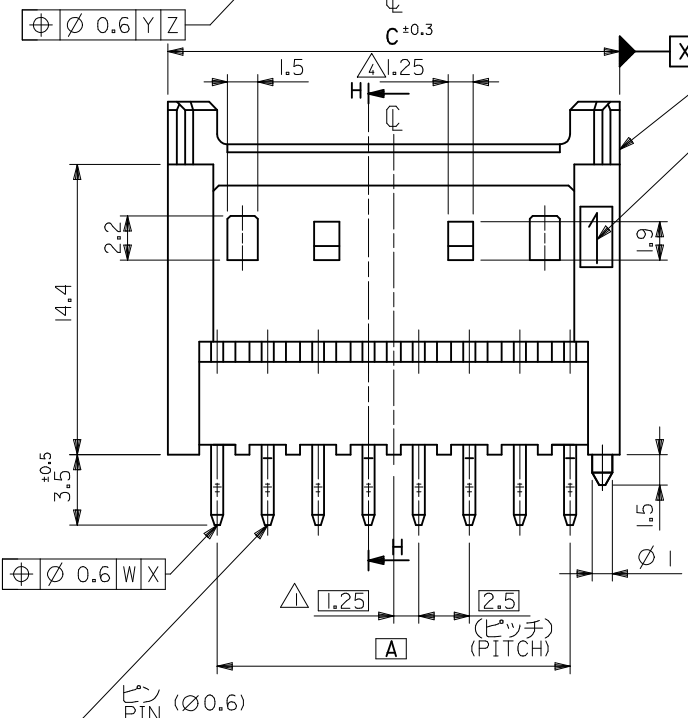
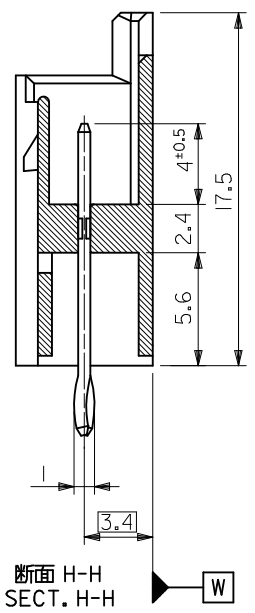


基板取付穴推奨寸法 (マウント面)  
RECOMMENDED P.C.BOARD HOLE DIMENSION  
(MOUNTING SIDE)  
( $t=1.6$ ) (SCALE 5 : 1)



ウエハー  
WAFER  
NYLON66,UL94V-0

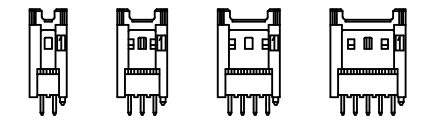
回路番号1  
CIRCUIT NO.1



断面 H-H  
SECT. H-H

注記  
NOTES

- △ 偶数極品に適用。  
APPLIES ONLY TO EVEN NO. CKT. SIZES.
- 2. 嵌合相手 : 51103,51136 シリーズ  
MATES WITH : 51103,51136 SERIES.
- 3.ELV AND RoHS COMPLIANT.
- △ 2、3極品において、下記寸法とする。  
DIMENSIONS OF 2 AND 3 CKTS IS FOLLOWING.
- 2CKTS : NONE  
3CKTS : 1
- 5. MATERIAL  
WAFER PA, UL94V-0, COLOR : NATURAL  
PIN PHOSPHOR BRONZE, TIN OVER COPPER PLATING

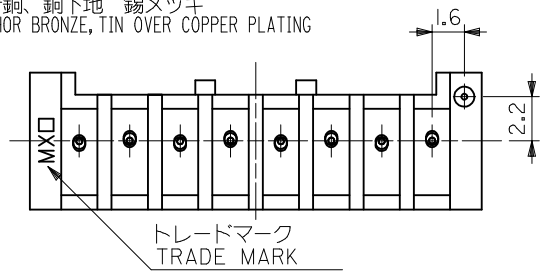


2極 3極 4極 5極  
2 CKT. 3 CKT. 4 CKT. 5 CKT.

ロック形状図  
LOCK CONFIGURATION

39.9	38.2	35	53517 - 1510	15
37.4	35.7	32.5	- 1410	14
32.4	30.7	27.5	- 1210	12
29.9	28.2	25	- 1110	11
27.4	25.7	22.5	- 1010	10
24.9	23.2	20	- 0910	9
22.4	20.7	17.5	- 0810	8
19.9	18.2	15	- 0710	7
17.4	15.7	12.5	- 0610	6
14.9	13.2	10	- 0510	5
12.4	10.7	7.5	- 0410	4
9.9	8.2	5	- 0310	3
7.4	5.7	2.5	53517 - 0210	2
C	B	A	TRAY PACKAGE ORDER NO.	極数 NO. OF CKTS.

リン青銅、銅下地 錫メッキ  
PHOSPHOR BRONZE, TIN OVER COPPER PLATING



トレードマーク  
TRADE MARK

REVISED EC NO: J2016-0718 DRWN:SSHI MONISHI 2016/01/26 CHKD:KOMURAKAMI 2016/01/26 APPR:TKANEKO 2016/02/16	GENERAL TOLERANCES (UNLESS SPECIFIED)		DIMENSION STYLE MM ONLY	SCALE 4:1	DESIGN UNITS METRIC	THIRD ANGLE PROJECTION
	10 UNDER	±0.3	DRAWN BY K. TOJO	DATE 1994/05/16	TITLE 2.5 WIRE TO BOARD CONN. WAFER ASSY -LEAD FREE-	
	10 OVER 30 UNDER	±0.25	CHECKED BY S. KUNISHI	DATE 1994/05/16	MOLEX INCORPORATED	
	30 OVER	±0.2	APPROVED BY M. FUKUSHIMA	DATE 1994/05/16	DOCUMENT NO. SD-53517-001	SHEET NO. 1 OF 1
REV	DESCRIPTION	ANGULAR ±3 °	MATERIAL NO. SEE TABLE	THIS DRAWING CONTAINS INFORMATION THAT IS PROPRIETARY TO MOLEX INCORPORATED AND SHOULD NOT BE USED WITHOUT WRITTEN PERMISSION		
DRAFT WHERE APPLICABLE MUST REMAIN WITHIN DIMENSIONS		SIZE A3				