

Sensor/Actuator cable - SAC-4P-MS/1,5-600/M 8FR-2L FB - 1406868

Please be informed that the data shown in this PDF Document is generated from our Online Catalog. Please find the complete data in the user's documentation. Our General Terms of Use for Downloads are valid (<http://phoenixcontact.com/download>)




Sensor/Actuator cable, 4-position, PP-EPDM halogen-free, gray RAL 7035, Plug straight M8, on Socket angled M8, with 2 LEDs, Cable length: 1.5 m, Hygienic design, with plastic knurl

Why buy this product

- ✓ Easy and safe: 100% electrically tested plug-in components
- ✓ Easy to clean, thanks to the special hygienic design
- ✓ Contamination can be detected quickly – thanks to the light color
- ✓ Convenient: increased machine availability thanks to quick and easy diagnostics



Key Commercial Data

| | |
|--------------|---|
| Packing unit | 1 STK |
| GTIN |  4 046356 781909 |
| GTIN | 4046356781909 |

Technical data

Dimensions

| | |
|-----------------|-------|
| Length of cable | 1.5 m |
|-----------------|-------|

Ambient conditions

| | |
|---------------------------------|-----------------------------------|
| Ambient temperature (operation) | -40 °C ... 105 °C (Plug / socket) |
| Degree of protection | IP65 |
| | IP67 |
| | IP68 |
| | IP69K |

General

| | |
|-----------------------|------|
| Rated current at 40°C | 4 A |
| Rated voltage | 24 V |
| Number of positions | 4 |

Sensor/Actuator cable - SAC-4P-MS/1,5-600/M 8FR-2L FB - 1406868

Technical data

General

| | |
|------------------------------|--|
| Insulation resistance | ≥ 100 MΩ |
| Coding | A - standard |
| Standards/regulations | M8 connector IEC 61076-2-104 |
| | Material conformance FDA 21 CFR 177.2600 |
| Status display | 2 LEDs |
| Protective circuit/component | Unwired |
| Insertion/withdrawal cycles | ≥ 100 |
| Torque | 0.2 Nm (M8 connectors) |

Material

| | |
|--------------------------|---------------|
| Contact material | CuSn |
| Contact surface material | Ni/Au |
| Contact carrier material | PP |
| Material of grip body | PP |
| Material, knurls | Polypropylene |
| Sealing material | FKM |

Standards and Regulations

| | |
|-----------------------|----------------------|
| Standard designation | M8 connector |
| Standards/regulations | IEC 61076-2-104 |
| Standard designation | Material conformance |
| Standards/regulations | FDA 21 CFR 177.2600 |

Cable

| | |
|---|---------------------------------------|
| Cable type | Halogen-free PP gray |
| Cable type (abbreviation) | 600 |
| Cable abbreviation | Li9Y14Y |
| Conductor cross section | 4x 0.25 mm ² (Signal line) |
| AWG signal line | 24 |
| Conductor structure signal line | 32x 0.10 mm |
| Core diameter including insulation | 1.17 mm ±0.02 mm (Signal line) |
| Thickness, insulation | ≥ 0.21 mm (Core insulation) |
| Wire colors | brown, white, blue, black |
| Overall twist | 4 wires, twisted |
| Length of twist, overall twist | 44 mm |
| External sheath, color | gray RAL 7035 |
| Outer sheath thickness | approx. 0.8 mm |
| External cable diameter D | 4.5 mm ±0.15 mm |
| Minimum bending radius, fixed installation | 5 x D |
| Minimum bending radius, flexible installation | 10 x D |
| Number of bending cycles | 4000000 |
| Minimum bending radius, drag chain applications | 10 x D |

Sensor/Actuator cable - SAC-4P-MS/1,5-600/M 8FR-2L FB - 1406868

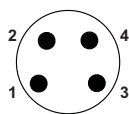
Technical data

Cable

| | |
|---------------------------------|---|
| Traversing path | 10 m |
| Traversing rate | 3 m/s |
| Acceleration | 10 m/s ² |
| Torsion force | ± 270 °/m (4,000,000 torsion cycles, max. 25 torsion cycles/min) |
| Cable weight | 23 kg/km |
| Outer sheath, material | PP-EPDM |
| Material conductor insulation | PP |
| Conductor material | Bare Cu litz wires |
| Insulation resistance | ≥ 1 GΩ*km (at 20 °C) |
| Conductor resistance | 78 Ω/km (at 20 °C) |
| Nominal voltage, cable | ≤ 300 V AC |
| Test voltage, cable | ≥ 3000 V AC (Spark test) |
| Special properties | FDA compliant according to FDA 21 CFR 177.2600 |
| | highly flexible |
| | Flexible cable conduit capable |
| Halogen-free | in accordance with DIN VDE 0472 part 815 |
| | in accordance with DIN EN 50267-2-1 |
| Other resistance | Resistant to cold bending and cold impacts According to DIN EN 60811-1-4 (-40 °C) |
| Ambient temperature (operation) | -40 °C ... 105 °C (cable, fixed installation) |
| | -25 °C ... 105 °C (cable, flexible installation) |

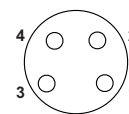
Drawings

Schematic diagram



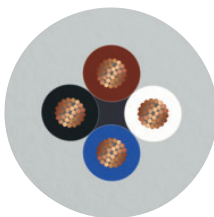
Pin assignment M8 plug, 4-pos., view male side

Schematic diagram



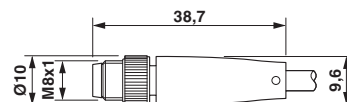
Pin assignment M8 socket, 4-pos., view female side

Cable cross section



Halogen-free PP gray [600]

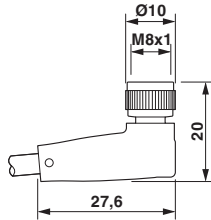
Dimensional drawing



M8 x 1 male plug, straight version

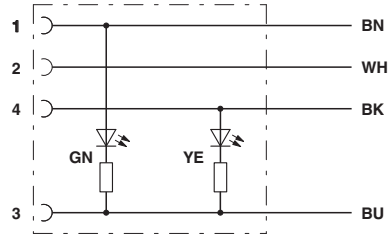
Sensor/Actuator cable - SAC-4P-MS/1,5-600/M 8FR-2L FB - 1406868

Dimensional drawing



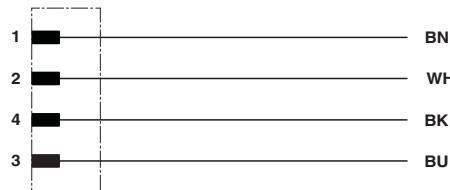
Socket M8 x 1, angled

Circuit diagram



Contact assignment of the M8 socket with LED

Circuit diagram



Contact assignment of the M12 plug

Phoenix Contact 2017 © - all rights reserved
<http://www.phoenixcontact.com>

PHOENIX CONTACT GmbH & Co. KG
Flachsmarktstr. 8
32825 Blomberg
Germany
Tel. +49 5235 300
Fax +49 5235 3 41200
<http://www.phoenixcontact.com>