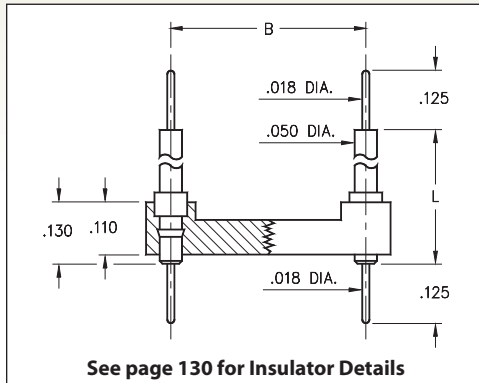
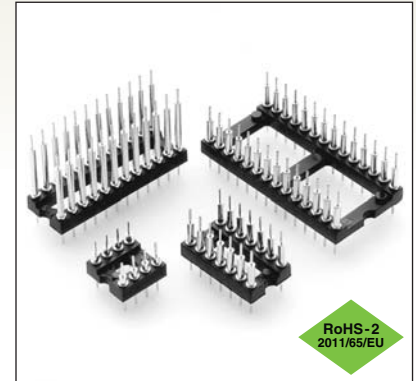


DUAL-IN-LINE HEADERS

SERIES 142 • INTERCONNECT • OPEN FRAME



- Series 142 DIL Headers have double-ended .018" diameter pluggable solder tails
- Used to interconnect PC Boards with spacings of .210", .335", .585" or .835". Series 142 uses MM #4259-1, -2, -3 or -4 pins. See page 212 for details
- Insulators are high temperature thermoplastic, suitable for all soldering operations
- For Electrical, Mechanical and Environmental Data, see page 264 for details



Total number of pins				Quantity per tube	ORDERING INFORMATION					
	A	B	C		L = .210	L = .335	L = .585	L = .835		
6	0.3	0.3	0.4	67	142-XX-306-00-591000	142-XX-306-00-592000	142-XX-306-00-593000	142-XX-306-00-594000		
8	0.4	0.3	0.4	50	142-XX-308-00-591000	142-XX-308-00-592000	142-XX-308-00-593000	142-XX-308-00-594000		
14	0.7	0.3	0.4	29	142-XX-314-00-591000	142-XX-314-00-592000	142-XX-314-00-593000	142-XX-314-00-594000		
16	0.8	0.3	0.4	25	142-XX-316-00-591000	142-XX-316-00-592000	142-XX-316-00-593000	142-XX-316-00-594000		
18	0.9	0.3	0.4	22	142-XX-318-00-591000	142-XX-318-00-592000	142-XX-318-00-593000	142-XX-318-00-594000		
20	1.0	0.3	0.4	40	142-XX-320-00-591000	142-XX-320-00-592000	142-XX-320-00-593000	142-XX-320-00-594000		
24	1.2	0.3	0.4	17	142-XX-324-00-591000	142-XX-324-00-592000	142-XX-324-00-593000	142-XX-324-00-594000		
22	1.1	0.4	0.5	14	142-XX-422-00-591000	142-XX-422-00-592000	142-XX-422-00-593000	142-XX-422-00-594000		
24	1.2	0.6	0.7	16	142-XX-624-00-591000	142-XX-624-00-592000	142-XX-624-00-593000	142-XX-624-00-594000		
28	1.4	0.6	0.7	14	142-XX-628-00-591000	142-XX-628-00-592000	142-XX-628-00-593000	142-XX-628-00-594000		
32	1.6	0.6	0.7	12	142-XX-632-00-591000	142-XX-632-00-592000	142-XX-632-00-593000	142-XX-632-00-594000		
40	2.0	0.6	0.7	10	142-XX-640-00-591000	142-XX-640-00-592000	142-XX-640-00-593000	142-XX-640-00-594000		
<div style="border: 1px solid black; border-radius: 50%; padding: 5px; display: inline-block;"> XX=Plating Code See to Right </div>					SPECIFY PLATING CODE XX =		10 ◆	90	40 ◆	
					Pin Plating		10 μ" Au	200 μ" Sn/Pb	200 μ" Sn	

