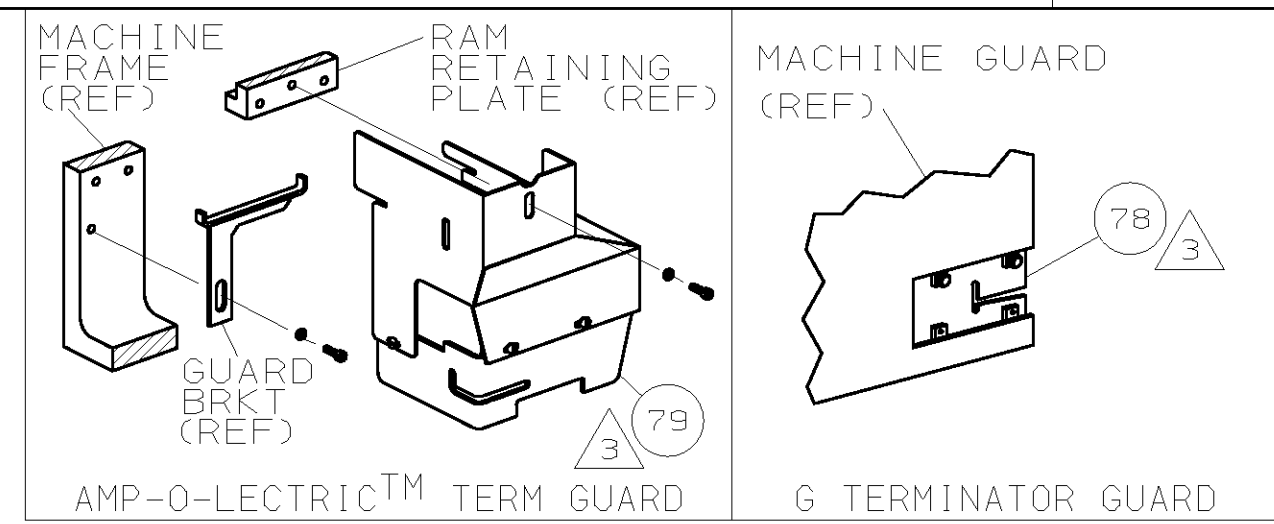
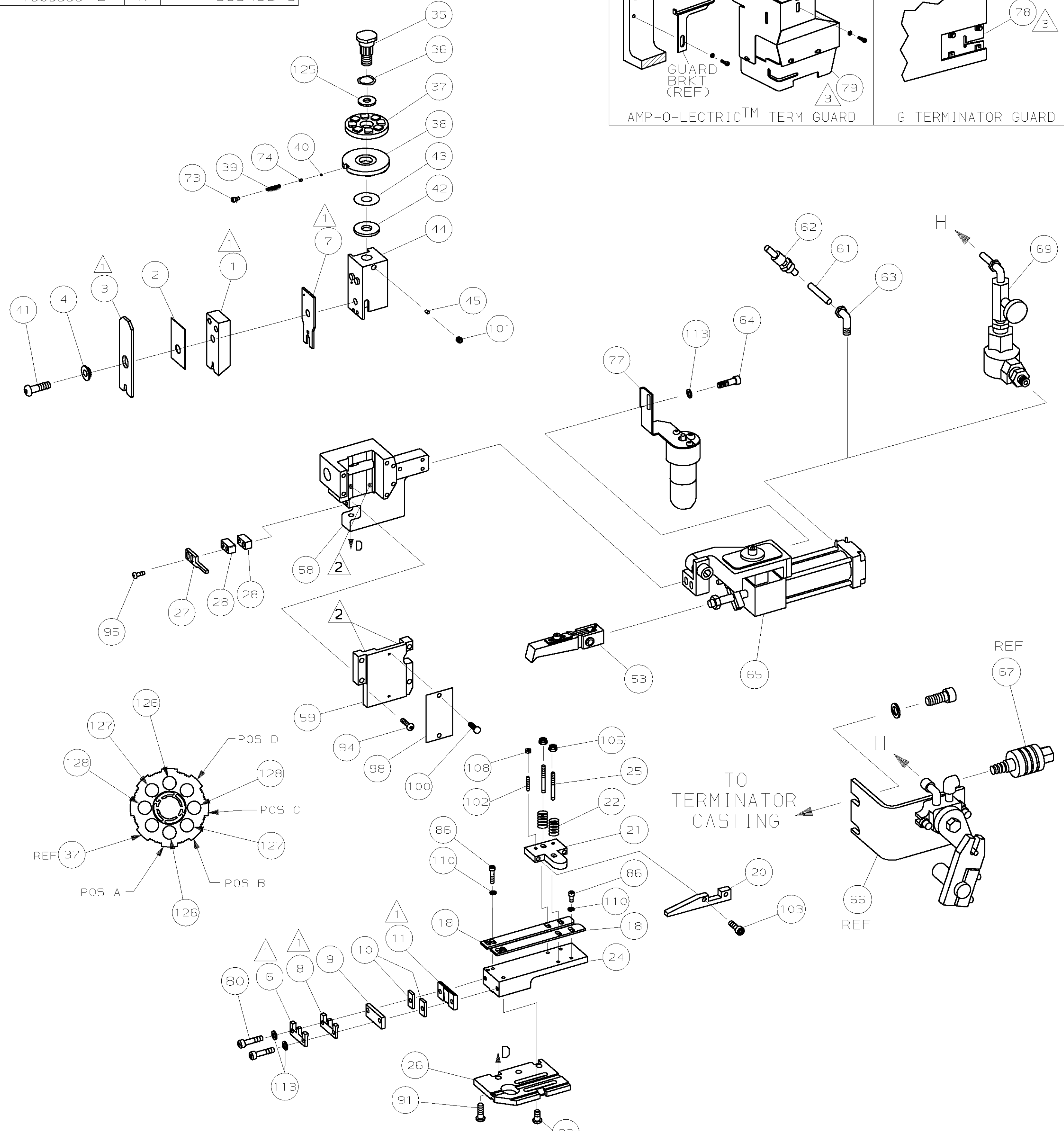


PART NUMBER	REV	FIRST USED
1385539-1	A	122500-1
1385539-2	A	565435-5



TERMINAL NAME: AUTOMACH. WIRE					
925552		AMP TERMINAL	AMP CRIMP SPECS		
PAD LTR	CRIMP HEIGHT	WIRE SIZE			
A	.051 ±.002 [1.30 ±0.05mm]	1.00mm ²			
B	.047 ±.002 [1.19 ±0.05mm]	0.75mm ²			
C	.045 ±.002 [1.14 ±0.05mm]	0.50mm ²			
D	NOT	USED			
CRIMP	SIZE	TYPE	RANGE		
WIRE	.100 [2.54mm]	F	0.50-1.00mm ²		
INSUL	.130 [3.30mm]	F	.070-.130		
WIRE STRIP LENGTH	TERM APPL SPEC	FEED	APPL INSTRUCTION	SET UP GAGE	LAYOUT
-	114-2088	.500	408-8039	-	L2764

-1	LEADMAKER & BENCH MODEL G		AIR FEED		
-2	BENCH MODEL K		AIR FEED		



- ① RECOMMENDED SPARE PARTS.
- ② GREASE LIGHTLY.
- ③ GUARD MUST BE IN PLACE WHEN OPERATING APPLICATOR IN A BENCH MACHINE.
- ④ SEE DRAWING FOR COMPONENTS
- ⑤ ITEM 78 USED WITH G TERMINATOR ONLY.

QTY	REV	U/M	DWG SIZE	PART NO	DESCRIPTION	ITEM NO
2	2	-	C	6-354779-6	PIN, WIRE DISC (.3320)C	129
2	2	-	C	6-354779-4	PIN, WIRE DISC (.3310)B	127
2	2	-	C	5-354779-2	PIN, WIRE DISC (.3250)A	126
1	1	-	A	986950-1	WASHER, FLAT PRECISION	125
1	1	-	A	217238-1	GENERAL INSTRUCTION PACKAGE	124
1	1	-	-	4088039	EF APPL INST 408-8039	123
						122
						121
						120
						119
						118
						117
						116
						115
						114
4	4	-	A	21024-5	WASHER, LOCK (#10) AIR ASSY	113
						112
						111
4	4	-	A	21024-4	WASHER, LOCK (NO.8) SHEAR BL	110
						109
2	2	-	A	21018-4	NUT, HEX (4-40) DRAG	108
						107
						106
2	2	-	A	21022-2	NUT, HEX 5L (8-32) DRAG STUD	105
						104
2	2	-	A	1-21000-3	SCR, SHC (4-40x.25) DRAG ARM	103
2	2	-	A	2-21006-6	SCR, SKT SET (4-40x.62) DRAG	102
1	1	-	A	21009-2	SCR, SKT SET (1/4-20x.25)RAM	101
2	2	-	A	21017-2	SCR, DRIVE (#2x.19) ID PLATE	100
						99
1	1	-	B	461264-1	PLATE, IDENTIFICATION	98
						97
						96
2	2	-	A	8-21002-9	SCR, BHC (8-32x1.00) STRIPPER	95
4	4	-	A	2-21002-9	SCR, BHC (10-32x.75) CAP	94
						93
4	4	-	A	3-21002-3	SCR, BHC (1/4-20x.50) ST 6D PL	92
3	3	-	A	2-22733-8	SCR, BHC (1/4-20x.62) H5G	91
						90
						89
						88
						87
4	4	-	A	2-21000-6	SCR, SHC (8-32x.38) STRIP GUIDE	86
						85
						84
						83
						82
						81
2	2	-	A	3-21000-9	SCR, SHC (10-32x1.00) SHEAR PL	80
1	-	-	A	455750-8	GUARD ASSY	79
-	REF	-	A	679532-1	INSERT, GUARD	78
1	-	-	C	465184-9	LUBRICATOR ASSY	77
						76
						75
1	1	-	A	690603-1	SPRING, ASSIST	74
1	1	-	A	23030-1	SCR, SKT CAP (6-32x.25) CP DSC	73
						72
						71
						70

QTY	REV	U/M	DWG SIZE	PART NO	DESCRIPTION	ITEM NO	
						60	
1	1	-	C	454220-1	CAP, RAM	59	
1	1	-	D	453736-1	HOUSING	58	
						57	
						56	
						55	
						54	
④	1	1	-	B	460680-2	FEED FINGER ASSY	53
						52	
						51	
						50	
						49	
						48	
						47	
						46	
1	1	-	A	690191-1	PLUG, NYLON	45	
1	1	-	C	1-819307-2	RAM	44	
1	1	-	A	690125-1	WASHER, LAMINATED	43	
1	1	-	A	690124-4	WASHER, RAM	42	
1	1	-	A	7-21002-9	BOLT, CRIMPER (5/16-24x1.00)	41	
1	1	-	A	23241-6	BALL, STEEL	40	
1	1	-	A	690170-1	SPRING, COMPRESSION	39	
1	1	-	C	1-690142-1	DISC, INSULATION	38	
1	1	-	D	354777-1	WIRE DISC, PLASTIC	37	
1	1	-	A	22480-5	WASHER, SPRING	36	
1	1	-	B	690212-1	POST, RAM	35	
						34	
						33	
						32	
						31	
						30	
						29	
2	2	-	B	2-690451-5	SPACER, STRIPPER	28	
1	1	-	A	690455-4	STRIPPER	27	
1	1	-	D	455676-4	PLATE, BASE	26	
2	2	-	A	22354-8	DRAG, STUD	25	
1	1	-	B	455678-1	PLATE, STRIP GUIDE	24	
						23	
2	2	-	A	22281-9	SPRING, DRAG	22	
1	1	-	A3	464451-1	ARM, STOCK DRAG	21	
1	1	-	A3	464452-2	DRAG, STOCK	20	
						19	
2	2	-	C	454204-3	GUIDE, STRIP (FRONT)	18	
						17	
						16	
						15	
						14	
						13	
						12	
①	1	1	-	B	240644-1	PLATE, REAR SHEAR	11
2	2	-	C	240645-3	SPACER, SHEAR PLATE	10	
①	1	1	-	B	690619-6	PLATE RETAINING	9
①	1	1	-	D	3-690618-2	ANVIL WIRE	8
①	1	1	-	B	459722-3	BLADE, SHEAR	7
①	1	1	-	D	456356-1	ANVIL INS.	6
						5	
1	1	-	B	238009-1	SPACER, BLOCK CRIMPER	4	
1	1	-	C	6-456134-4	CRIMPER, INSULATION	3	
1	1	-	B	455888-8	SPACER, CRIMPER	2	
①	1	1	-	C	4-459736-1	CRIMPER, WIRE	1

QTY	REV	U/M	DWG SIZE	PART NO	DESCRIPTION	ITEM NO
-2	-1	U/M	DWG SIZE	PART NO	DESCRIPTION	ITEM NO

QTY	REV	U/M	DWG SIZE	PART NO	DESCRIPTION	ITEM NO
-2	-1	U/M	DWG SIZE	PART NO	DESCRIPTION	ITEM NO

THIS DRAWING IS A CONTROLLED DOCUMENT.

THIS DRAWING IS UNRELEASED. RELEASE FOR PUBLICATION BY AMP INCORPORATED. ALL RIGHTS RESERVED. COPYRIGHT 20

LOC A
D1ST 66

DIMENSIONS IN INCHES. DO NOT SCALE PRINT. TOLERANCES UNLESS OTHERWISE SPECIFIED:
 2 PLC DEC ±.25
 3 PLC DEC ±.
 4 PLC DEC ±.
 ANGLES ±.
 SURF TEXTURE: ✓
 REMOVE BURRS, BREAK SHARP EDGES R.015 MAX

MATL - HT TR - FIN -
 DR C. REICHELDERFER 17 JAN 03 APP T. ELBIN 17 JAN 03
 CHK - REL -
AMP Tyco Electronics Harrisburg, PA 17105-3608
 NAME END FEED HDM APPLICATOR MACHINE REF MINI APPL
 SCALE - DWG NO 1385539 SHEET 1 OF 1 REV A