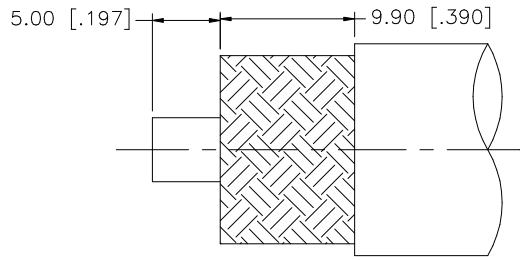
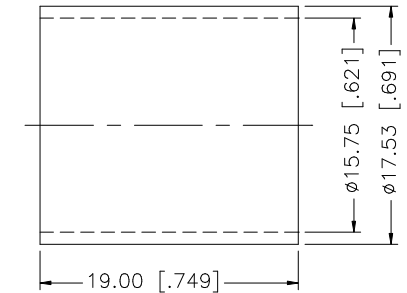
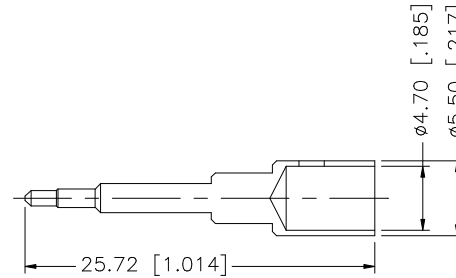
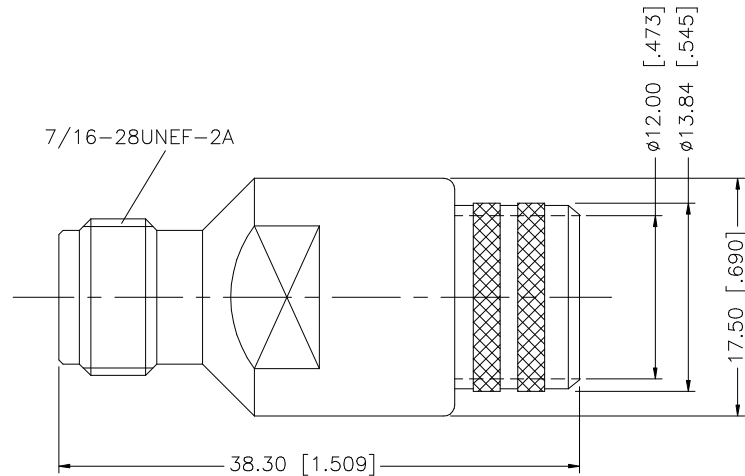


REV.	DATE	DESCRIPTION
A	06/15/99	MODIFY DESCRIPTION
B	11/14/00	UPDATE PART DIMENSIONS
C	02/19/07	UPDATE DRAWING FORMAT



RECOMMENDED CABLE STRIPPING DIMENSIONS



NOTES:

1. CONSULT AMPEHNOL CONNEX FOR CRIMP TOOL INFORMATION.

8				<small>UNLESS OTHERWISE SPECIFIED DIMENSIONS ARE IN MILLIMETERS. DIMENSIONS IN [ ] ARE IN INCHES AND FOR CUSTOMER REFERENCE ONLY.</small> <small>UNLESS OTHERWISE SPECIFIED TOLERANCES FOR MILLIMETERS ARE:</small> 0.5 - 8mm ± 0.20mm 8 - 30mm ± 0.40mm 30 - 120mm ± 0.50mm <small>UNLESS OTHERWISE SPECIFIED TOLERANCES FOR INCHES ARE:</small> .020 - .315 ± ± 0.007" .315 - 1.180 ± ± 0.015" 1.180 - 4.724 ± ± 0.020" DO NOT SCALE DRAWING	APPROVALS	DATE	<h1 style="color: blue; text-align: center;">Amphenol Connex</h1>				
7					DRAWN	G.R.S.				02/19/07	
6					CHECKED			PART DESCRIPTION			
5					ISSUED			TNC CRIMP JACK – REVERSE POLARIZED (FOR LMR 600 CABLE)			
4	FERRULE	COPPER	NICKEL		1	SHEET	1 OF 1	PART NO.			
3	CONTACT PIN	BRASS	GOLD	1			122418RP				
2	INSULATOR	TEFLON	NATURAL	1			DWG. NO.	122418RP.DWG	REV. C	SIZE A	SCALE NA
1	BODY	BRASS	NICKEL	1							
	DESCRIPTION	MATERIAL	FINISH	QTY							